



AUDIT PROGRAM OPERATING INSTRUCTION
for UNICUM vending machines



Document revision table:

Version	Date	Brief description	Pages
1.0	01.2018	Up-to-date document created (version of the program 0.01.10).	All

Because of our constant efforts to enhance the software of UNICUM vending machines, improving reliability and service conditions of vending machines, we may have made some minor changes to the AUDIT program, that were not reflected in this instruction.

© LLC "KRAFT" 2018r.



CONTENTS

1.0 GENERAL INFORMATION	4
1.1 Purpose.....	4
1.2 Technical requirements	4
1.3 Program installation	5
1.4 Program start	13
2.0 PROGRAM INTERFACE.....	14
2.1 Data representation.....	14
2.2 Supported file formats	14
2.3 Menu structure	15
2.3.1 Menu item - File.....	15
2.3.2 Menu item - Language.....	16
3.0 TABS AND THEIR DESCRIPTION	17
3.1 VM (vending machine)	17
3.2 Current data	18
3.3 Common audit.....	20
3.4 Coins	24
3.5 Bills.....	26
3.6 Foodbox 1, Foodbox 2, VM Hot 1 & Virtual products	28
3.7 Errors	33
3.8 Power board.....	34
3.9 Summary	35



1.0 GENERAL INFORMATION

1.1 Purpose

The AUDIT program (hereinafter - the program) is intended for viewing the audit files, read from the UNICUM vending machines on the computer/notebook screen.

A crippled version of the AUDIT program can also be built-in into the operator menu and/or menu technician of the ROSSO TOUCH, ROSSO TOUCH TO GO, NERO TOUCH and MOVE vending machines user interface.

1.2 Technical requirements

For the program operation, you need a computer/notebook with a free USB port for connecting the USB-flash drive and an OS Windows XP or later installed.

To read the audit files from the vending machine use the USB-flash drive supporting the FAT16 or FAT32 file systems.

Attention! Disk drives and flash disks are not supported by the UNICUM vending machines software.

The capacity of the USB-flash drive for writing the statistics is determined on the basis of the volume of the stored information.



1.3 Program installation

To install the program visit the manufacturer website at <http://www.unicum.ru/en/>

1. Then select the SUPPORT item (see fig.1.1).

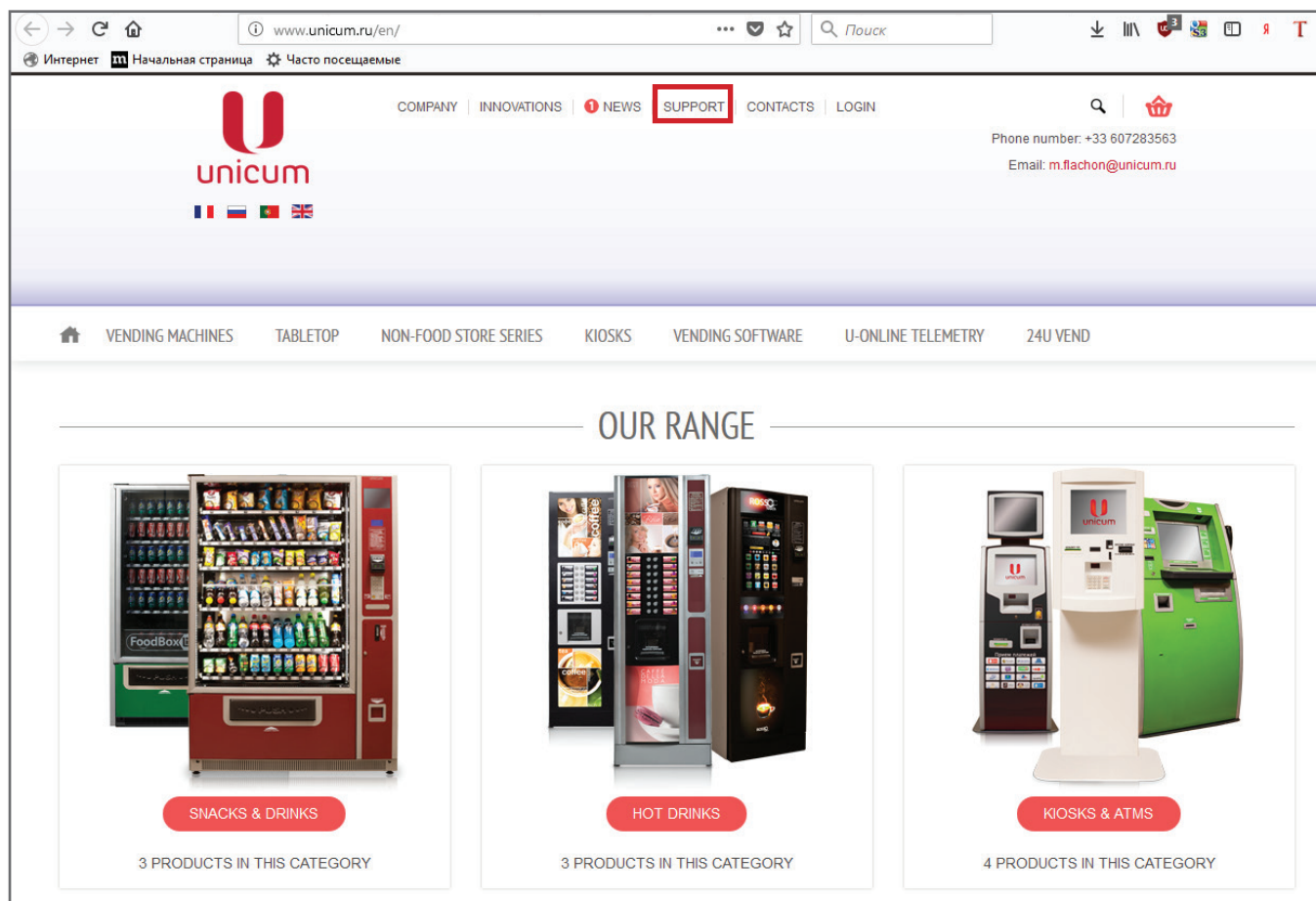


Figure 1.1



2. On the opened page select the required vending machine model (see fig.1.2).

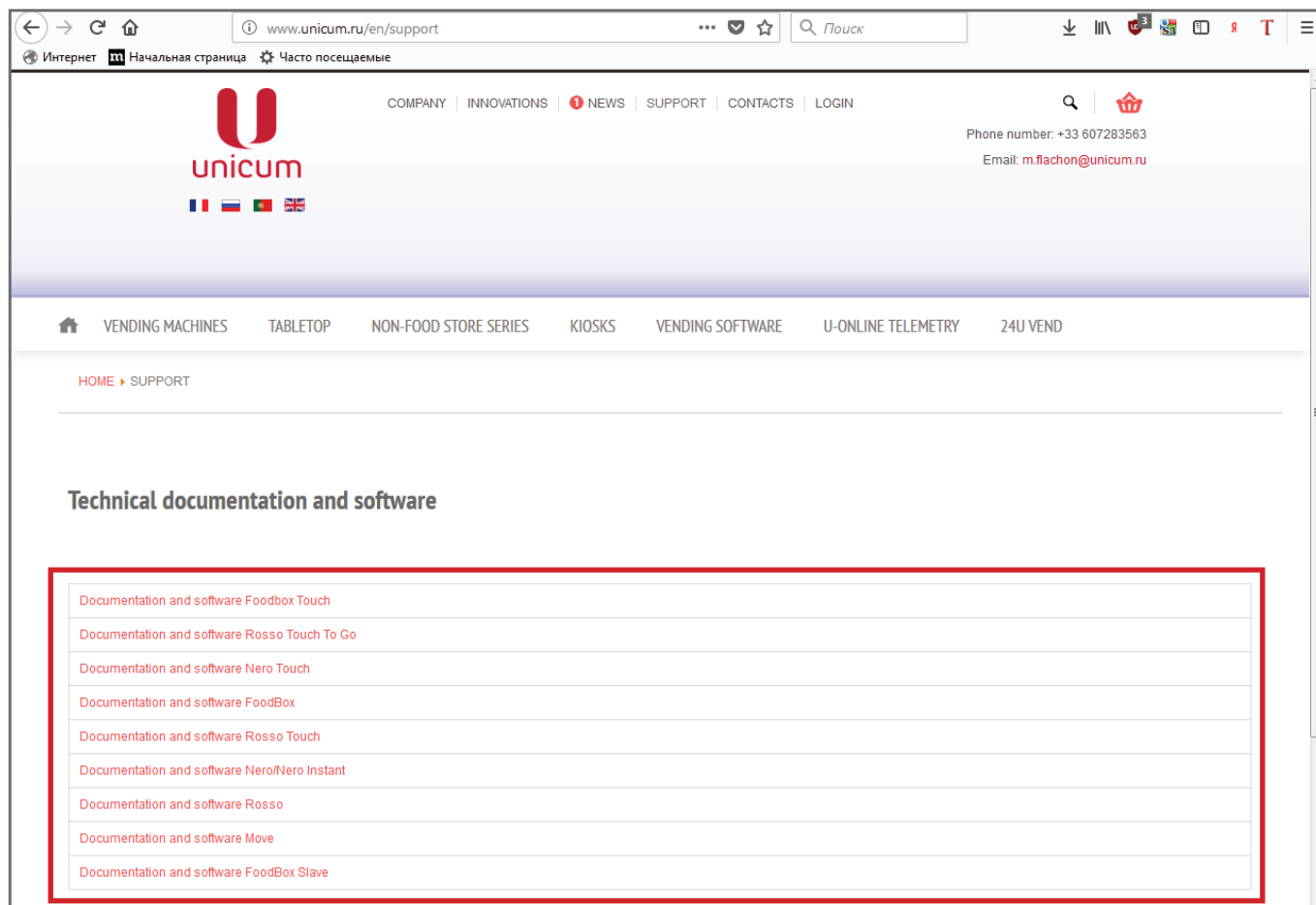


Figure 1.2

3. On the opened page in the Software section select the Configurator & Audit item (see fig.1.3).

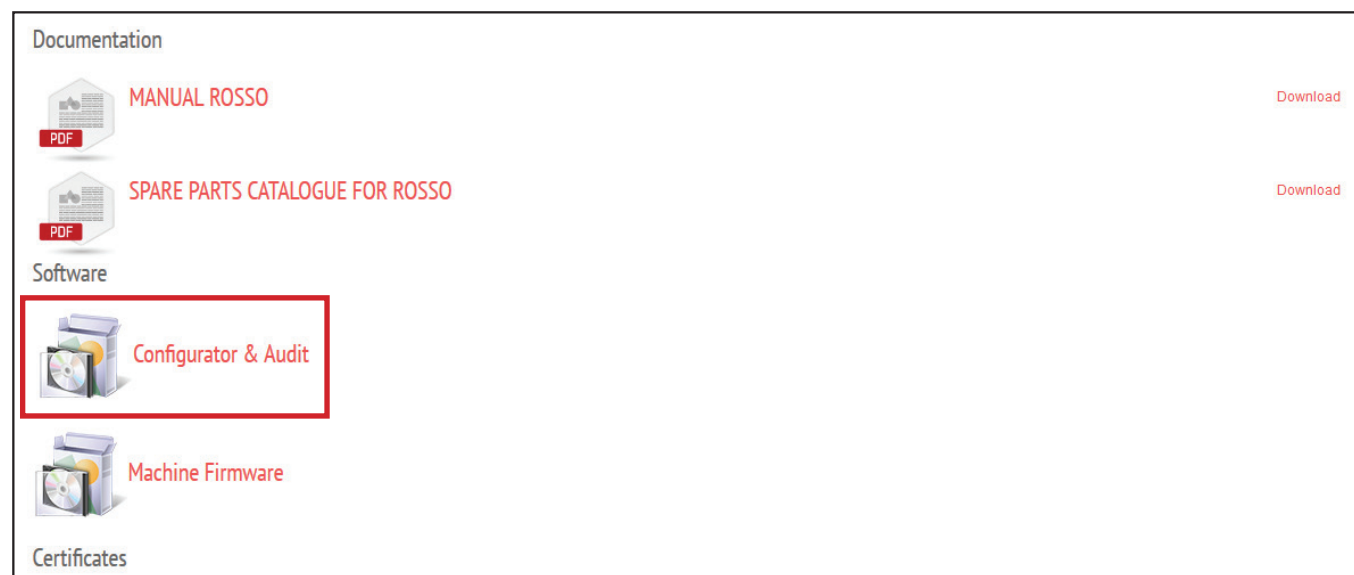


Figure 1.3



4. Depending on your browser you'll see a screen (see fig.1.4), where one should confirm the program installation.

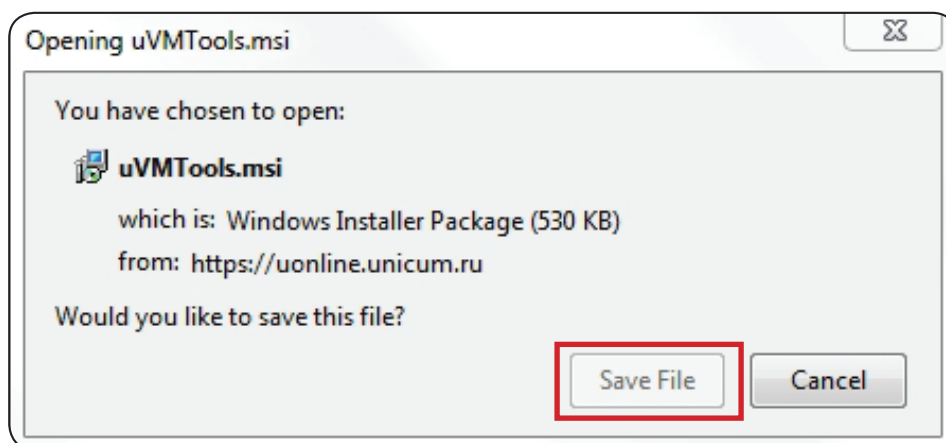


Figure 1.4a - Mozilla Firefox

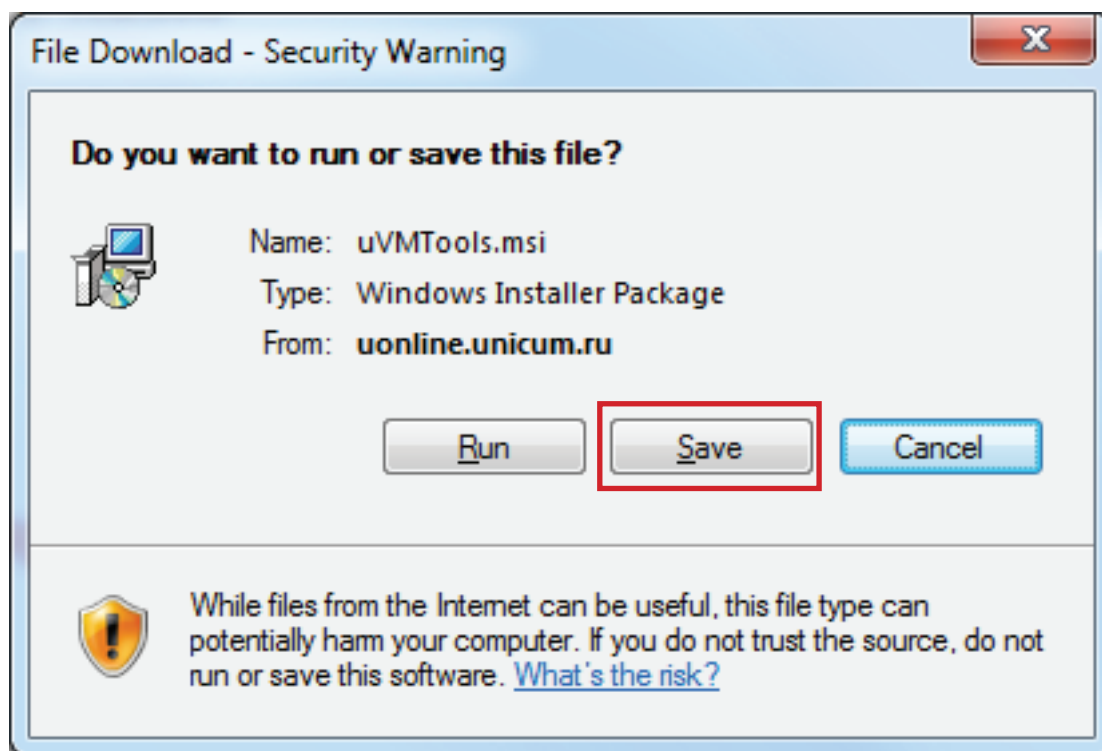


Figure 1.4b - Explorer



5. By pressing the button you'll activate the process of program installation on your computer/notebook. During the program installation the setup wizard screen (see fig.1.5) will be displayed, where one should press the **Next** button

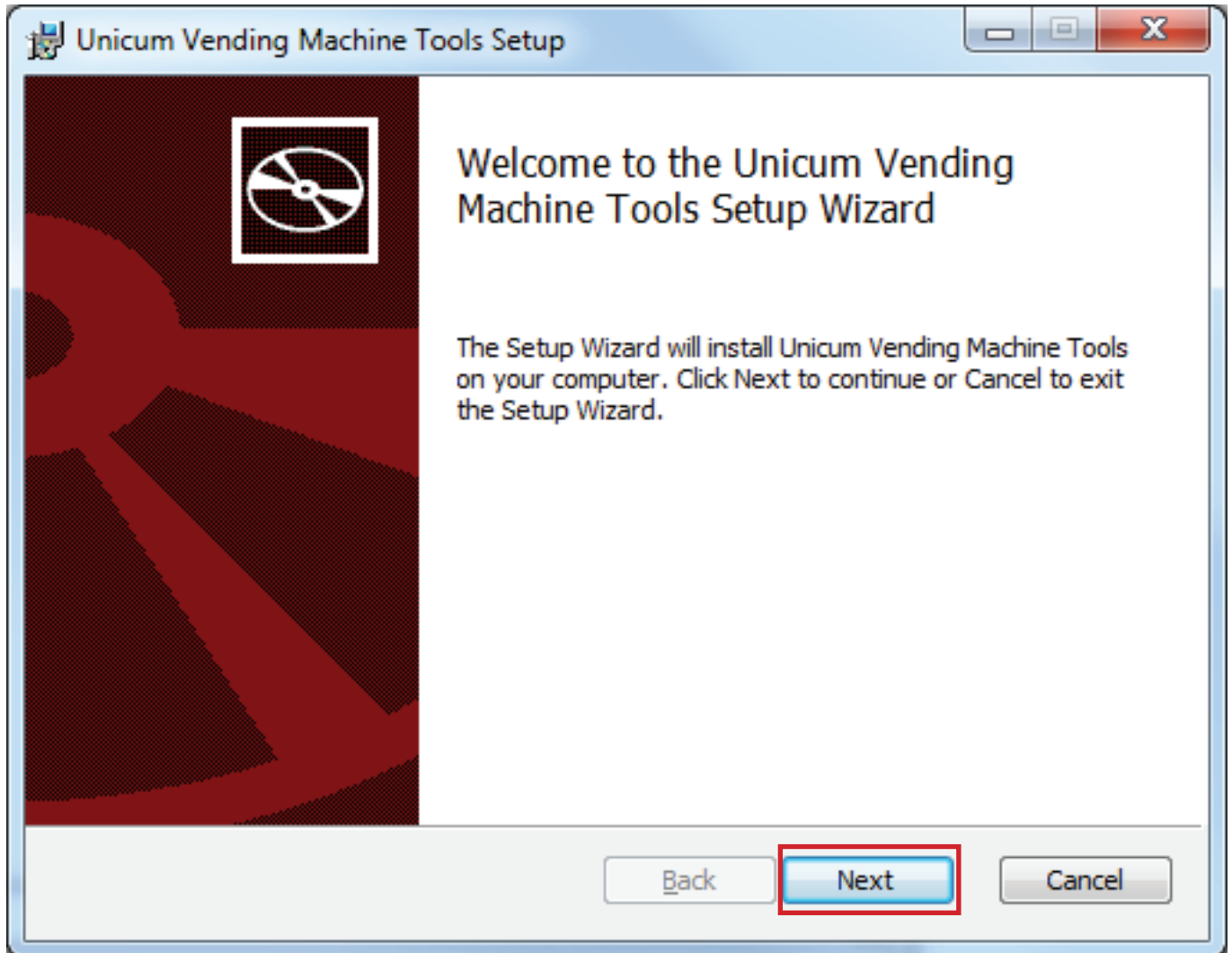


Figure 1.5



6. On the next stage of program installation select the program installation folder, by default the program will install to the **Program Files** folder. If you want to change the program installation folder press the **Change** button and select the desired folder in the opened screen (see fig.1.6). To continue the program installation press the **Next** button.

If you want to create a shortcut on the Desktop, check the **Create a shortcut for this program on the desktop?** box.

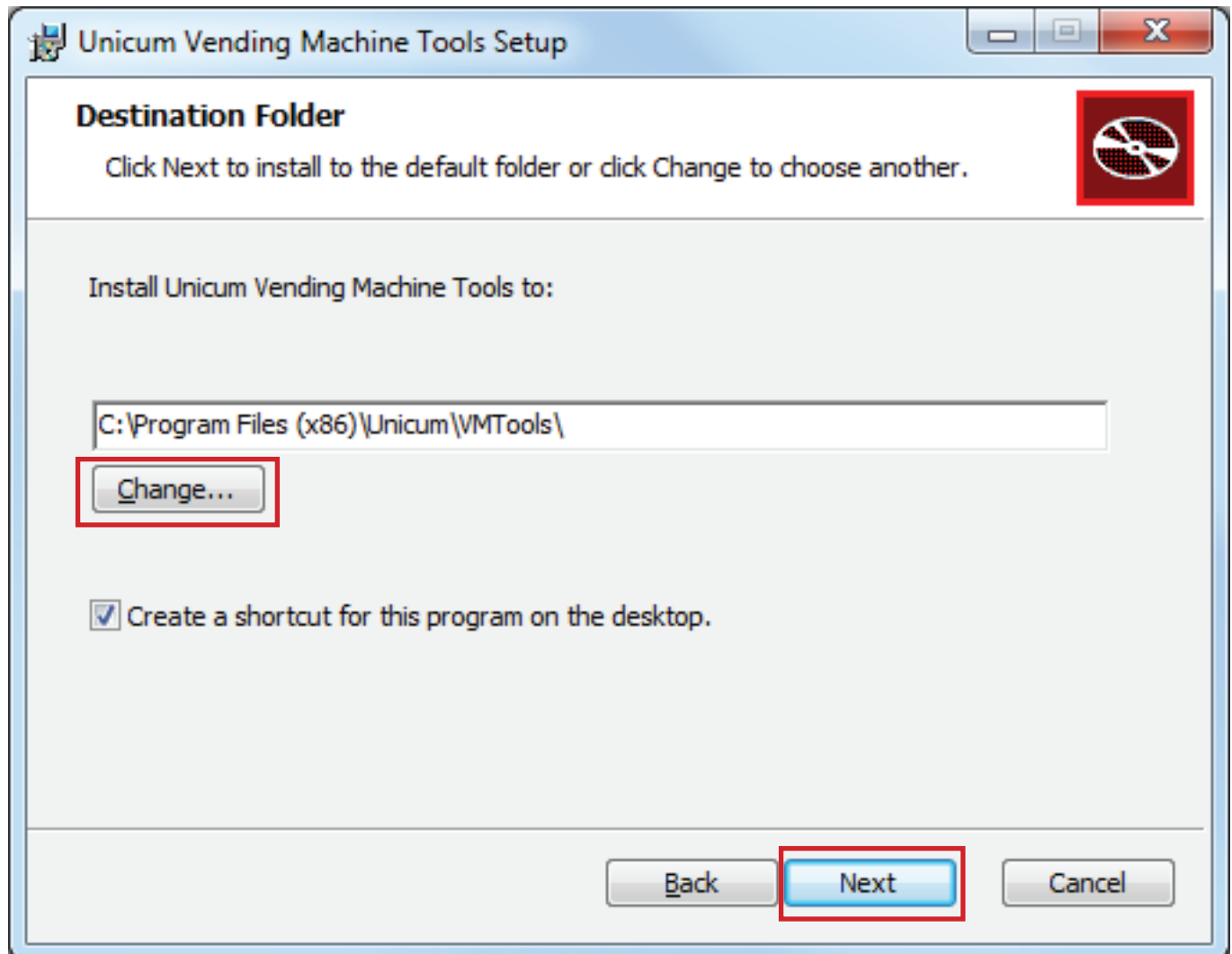


Figure 1.6



7. After checking the accuracy of installation parameters press the Install button (see fig.1.7).

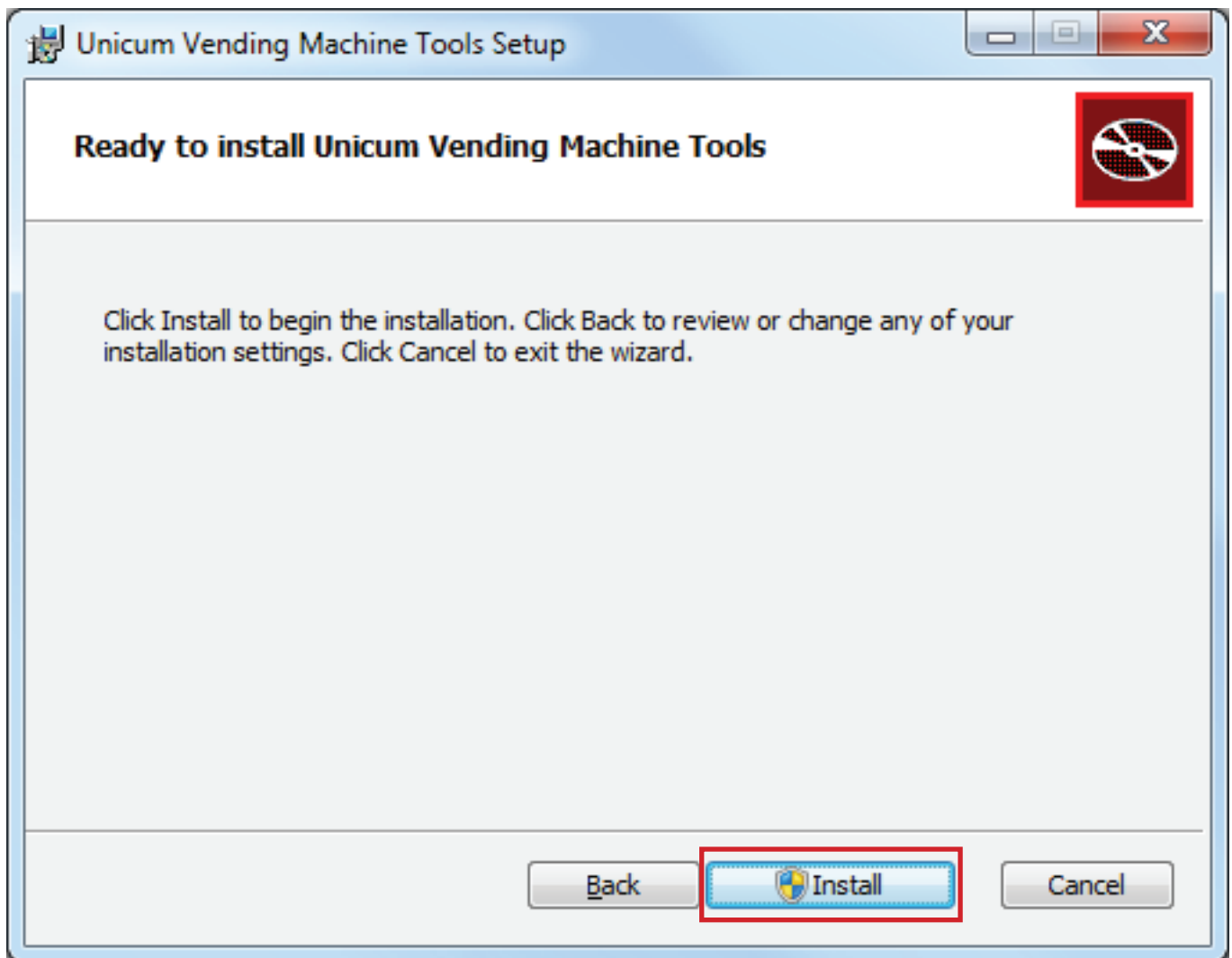


Figure 1.7



8. The setup wizard will install the **AUDIT** and **CONFIGURATOR** programs on your computer/note-book. Program installation may take some time (see fig.1.8).

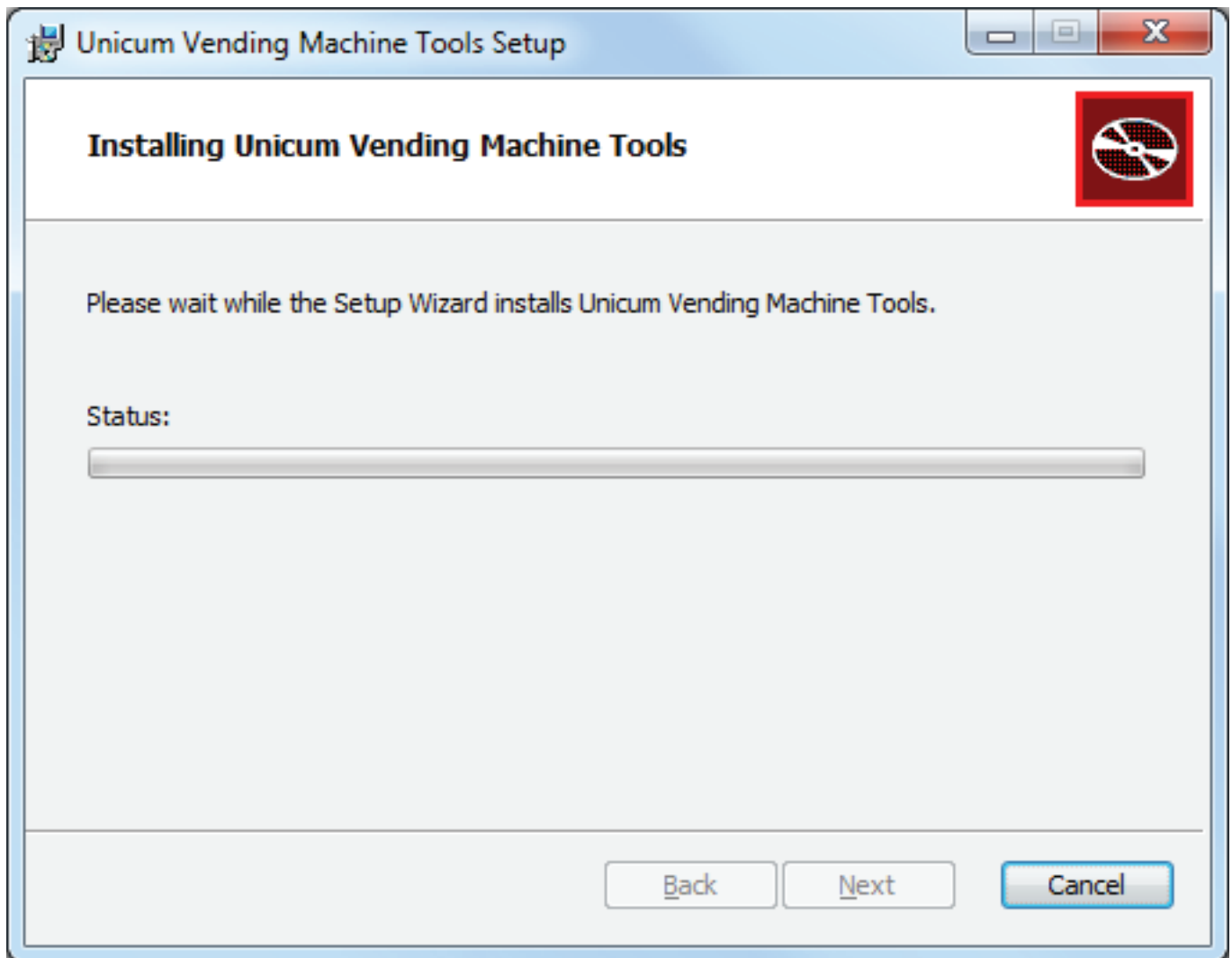


Figure 1.8



9. After the completion of the program installation on your computer/notebook the screen will be displayed (see fig.1.9), on which one should press the **Finish** button to exit the setup wizard program.

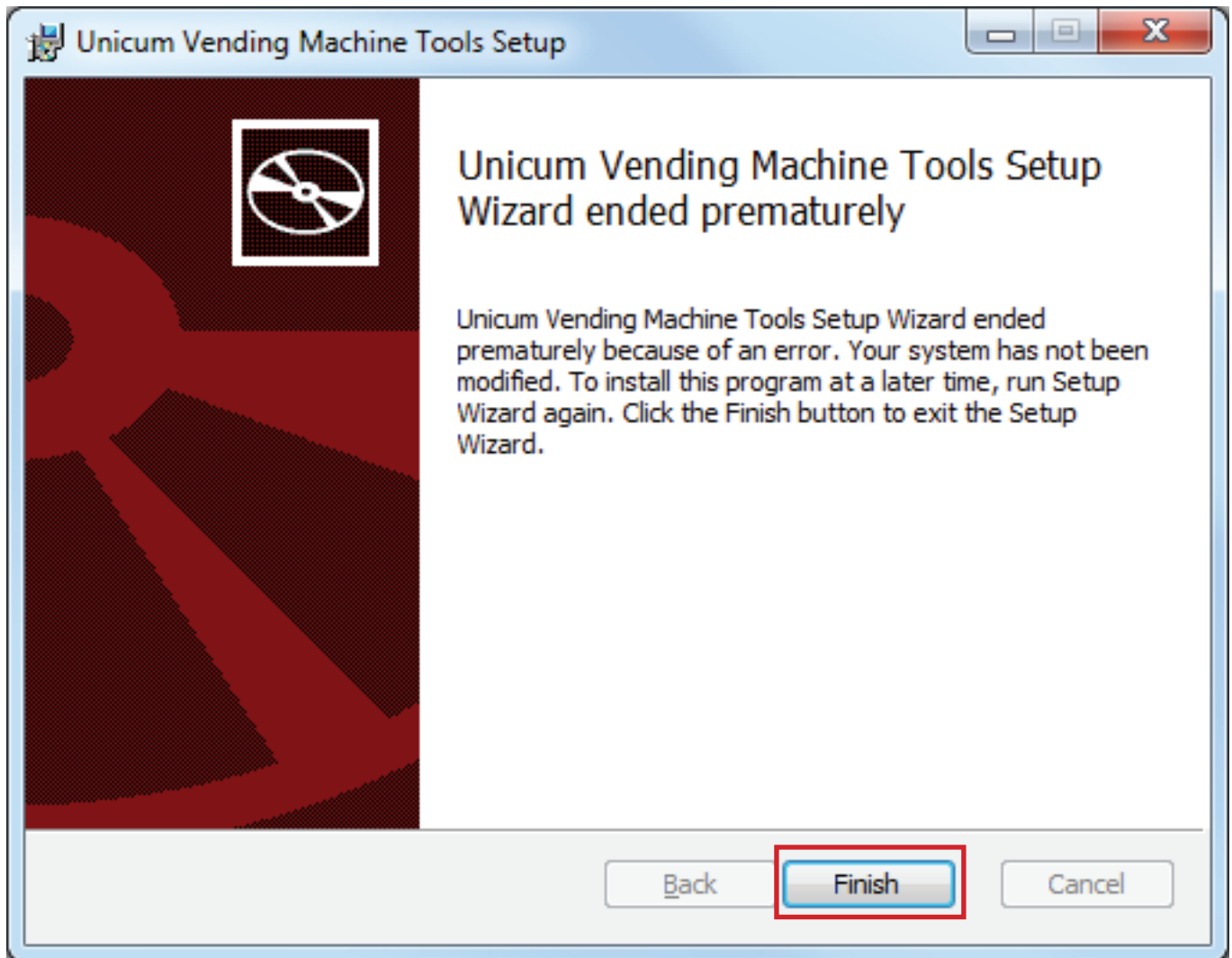


Figure 1.9



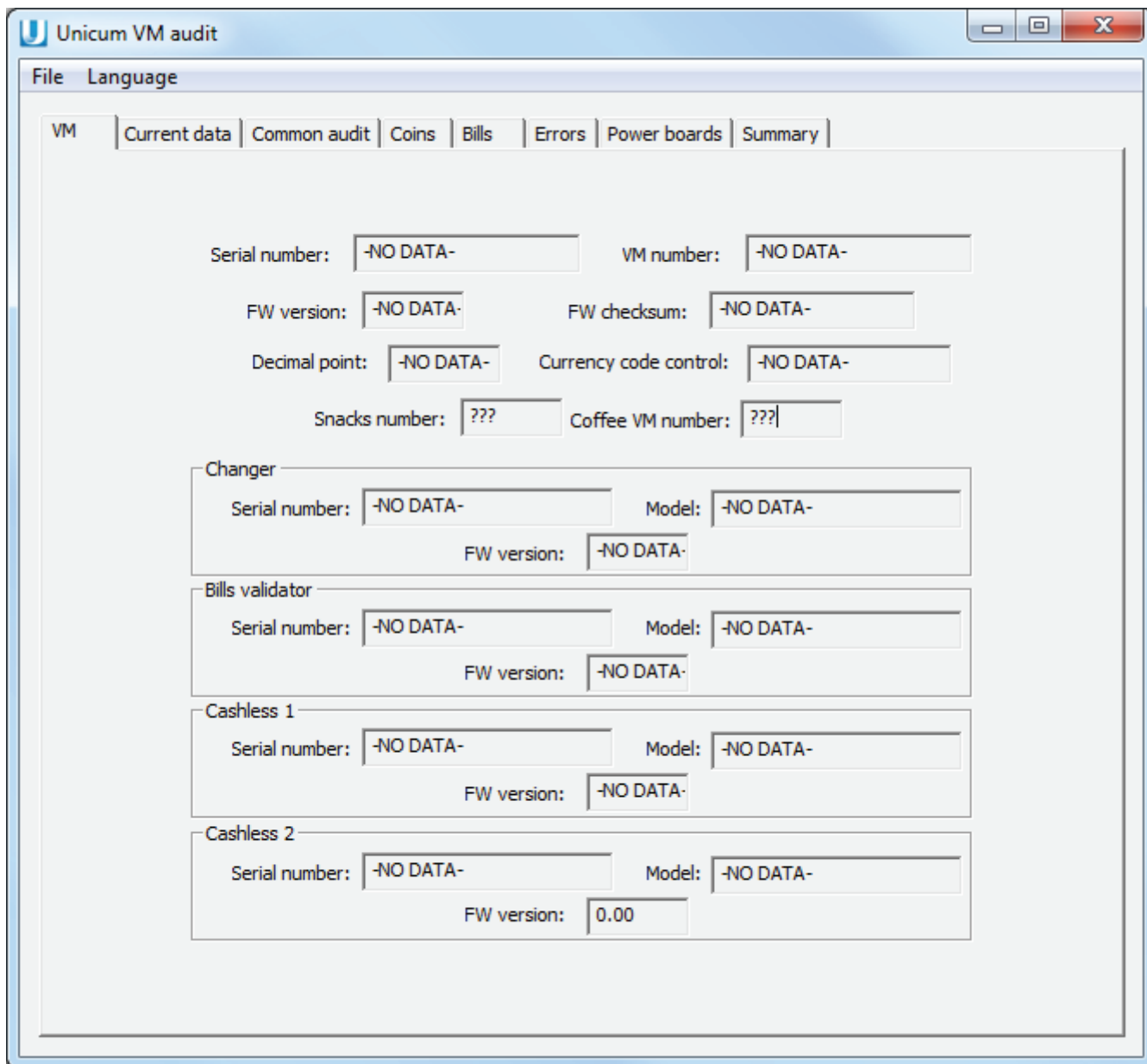
1.4 Program start

It's possible to start the AUDIT program by either of two ways:

1. **Via Start \ Programs \ Unicum Vending Machine Tools \ Unicum Audit** menu or from the program shortcut.

2. Double click with the LMB (left mouse button) on any audit file, read from the Unicum vending machine (at the same time the file will be automatically loaded to the opened program).

When starting the program via the Start menu or the shortcut (the first method) the following screen will display on the computer/notebook screen (see fig.1.10).



The screenshot shows the 'Unicum VM audit' application window. It has a menu bar with 'File' and 'Language'. Below the menu bar is a tabbed interface with tabs: 'VM', 'Current data', 'Common audit', 'Coins', 'Bills', 'Errors', 'Power boards', and 'Summary'. The 'VM' tab is selected. The main area contains several input fields for various data points:

- Serial number: -NO DATA-
- VM number: -NO DATA-
- FW version: -NO DATA-
- FW checksum: -NO DATA-
- Decimal point: -NO DATA-
- Currency code control: -NO DATA-
- Snacks number: ???
- Coffee VM number: ???
- Changer:
 - Serial number: -NO DATA-
 - Model: -NO DATA-
 - FW version: -NO DATA-
- Bills validator:
 - Serial number: -NO DATA-
 - Model: -NO DATA-
 - FW version: -NO DATA-
- Cashless 1:
 - Serial number: -NO DATA-
 - Model: -NO DATA-
 - FW version: -NO DATA-
- Cashless 2:
 - Serial number: -NO DATA-
 - Model: -NO DATA-
 - FW version: 0.00

Figure 1.10

When starting the program by double-clicking an audit file (the second method), the file is automatically loaded into the program and the program fields become filled with data depending on the file loaded.



1.5 Program update

The AUDIT program should be regularly updated. Particularly in the cases, when upon opening an audit file the program informs that some fields from this file are not supported by the current version.

The latest version of the program can be downloaded from the manufacturer website (see section 1.3 Program installation).

2.0 PROGRAM INTERFACE

The program interface is realized by the following control elements - a program menu (File, Language) and a panel with parameter tabs. Below the menu and tabs structure is described in detail.

2.1 Data representation

The vending machine audit file data in the AUDIT program is presented in the form of statistical information, mainly by numerical values, intended for sales record keeping and operation control.

2.2 Supported file formats

The vending machine statistics (audit) is saved into DTS-EVA format.

At that, the file name looks the following: Axxmmddi.DTS, where

- xx = are two last digits of the vending machine serial number;
- mm = month (if date and time are set in the vending machine menu);
- dd = date (if date and time are set in the vending machine menu);
- i = a number from 0 to 9. You can save up to 10 files under different file names within 24 hours.

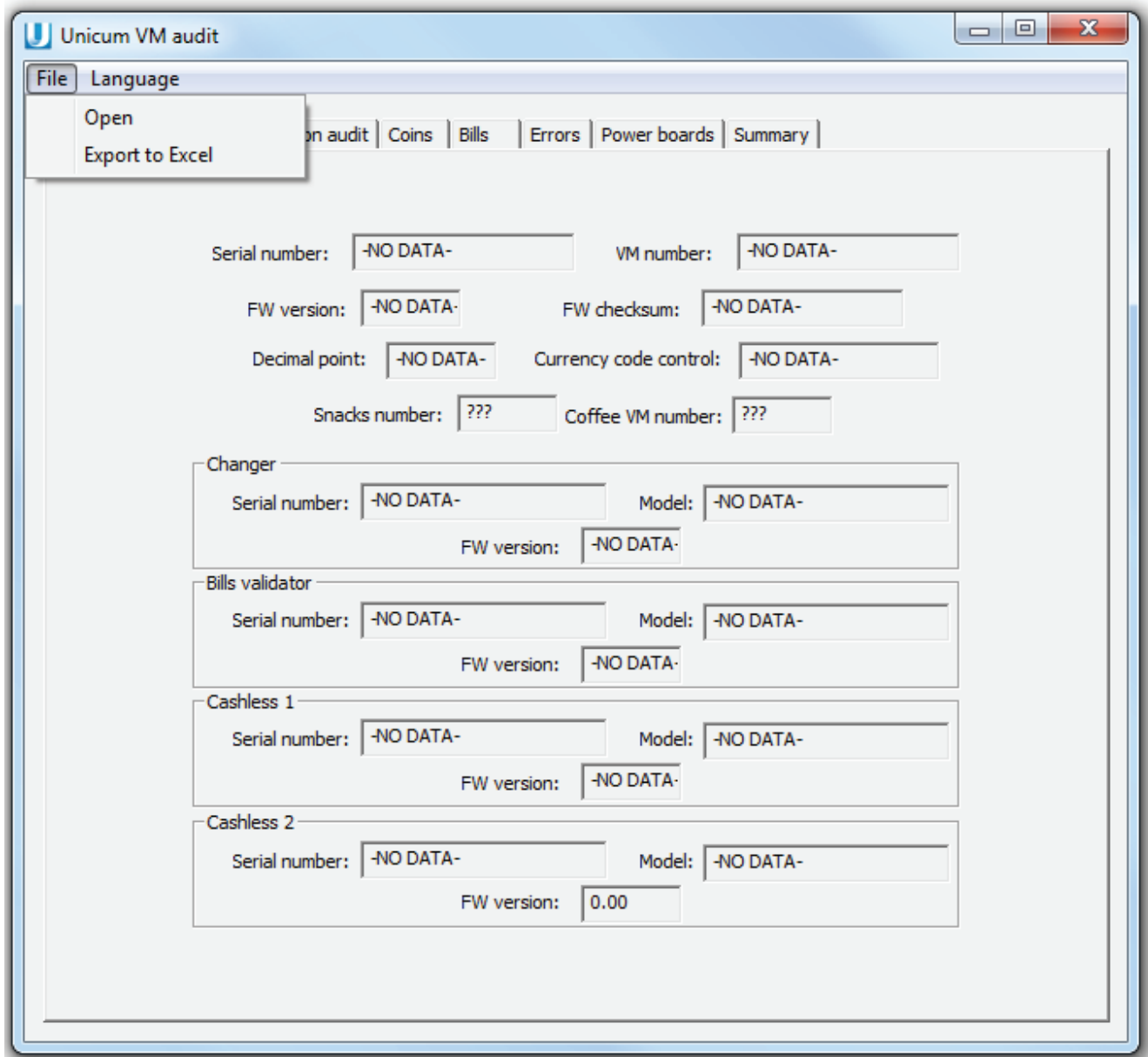


2.3 Menu structure

In this section, all program menu items and their brief (primary) function are listed.

2.3.1 Menu item - File

This menu item is intended for controlling the audit files.



Unicum VM audit

File Language

Open
Export to Excel

on audit Coins Bills Errors Power boards Summary

Serial number: -NO DATA- VM number: -NO DATA-

FW version: -NO DATA- FW checksum: -NO DATA-

Decimal point: -NO DATA- Currency code control: -NO DATA-

Snacks number: ??? Coffee VM number: ???

Changer

Serial number: -NO DATA- Model: -NO DATA-

FW version: -NO DATA-

Bills validator

Serial number: -NO DATA- Model: -NO DATA-

FW version: -NO DATA-

Cashless 1

Serial number: -NO DATA- Model: -NO DATA-

FW version: -NO DATA-

Cashless 2

Serial number: -NO DATA- Model: -NO DATA-

FW version: 0.00

Figure 2.1

Open - permits opening the audit file retrieved from the UNICUM vending machine (the vending machine audit file should be located on your computer/notebook/or some other device hard disk drive). For reading the file, specify its location in the program.

Export to Excel - permits exporting the opened audit file to the XML format, which can be later opened by Excel (the export is carried out in the currently selected language - see below).



2.3.2 Menu item - Language

This menu item is intended for choosing the language for displaying the AUDIT program interface.

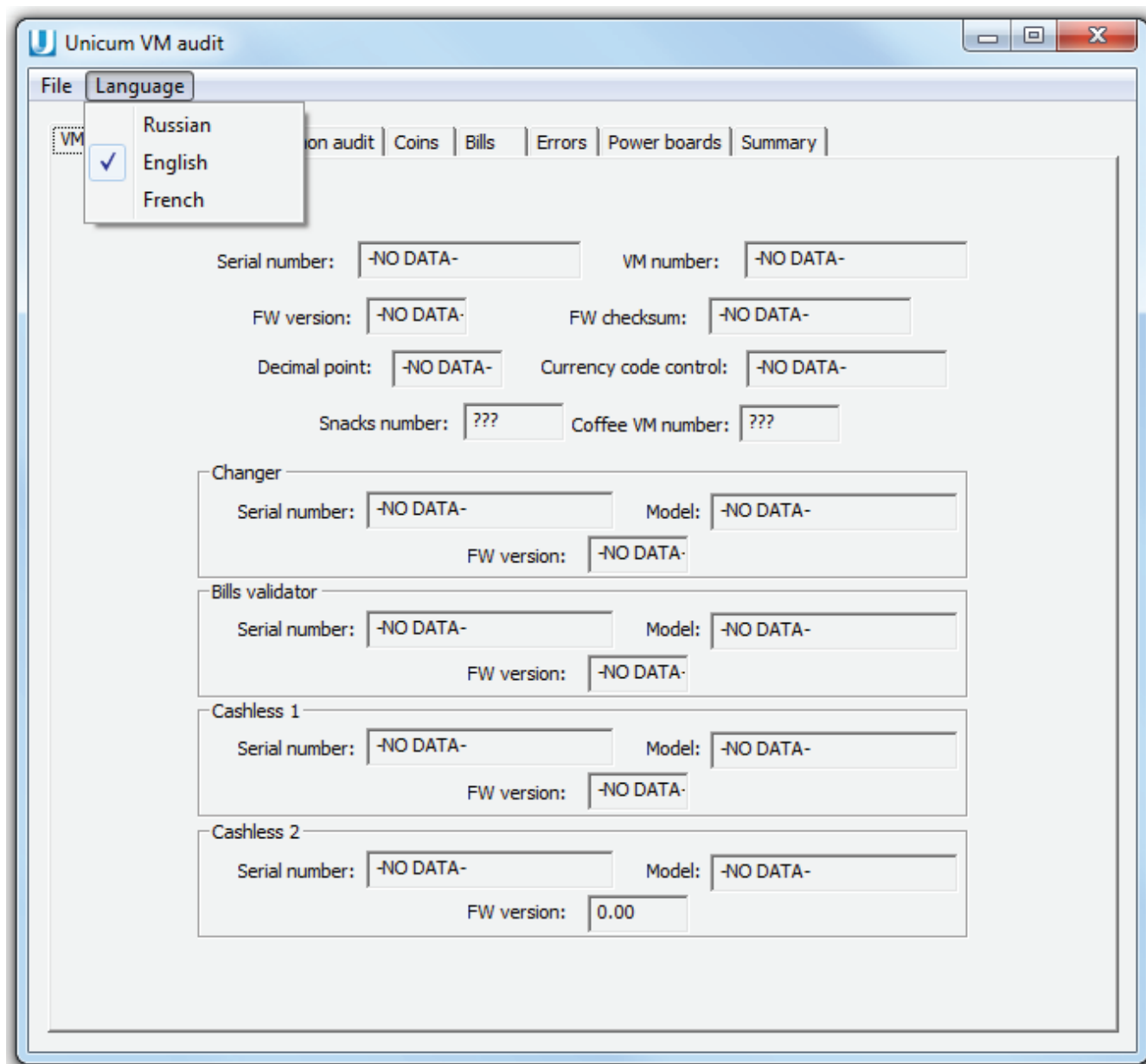
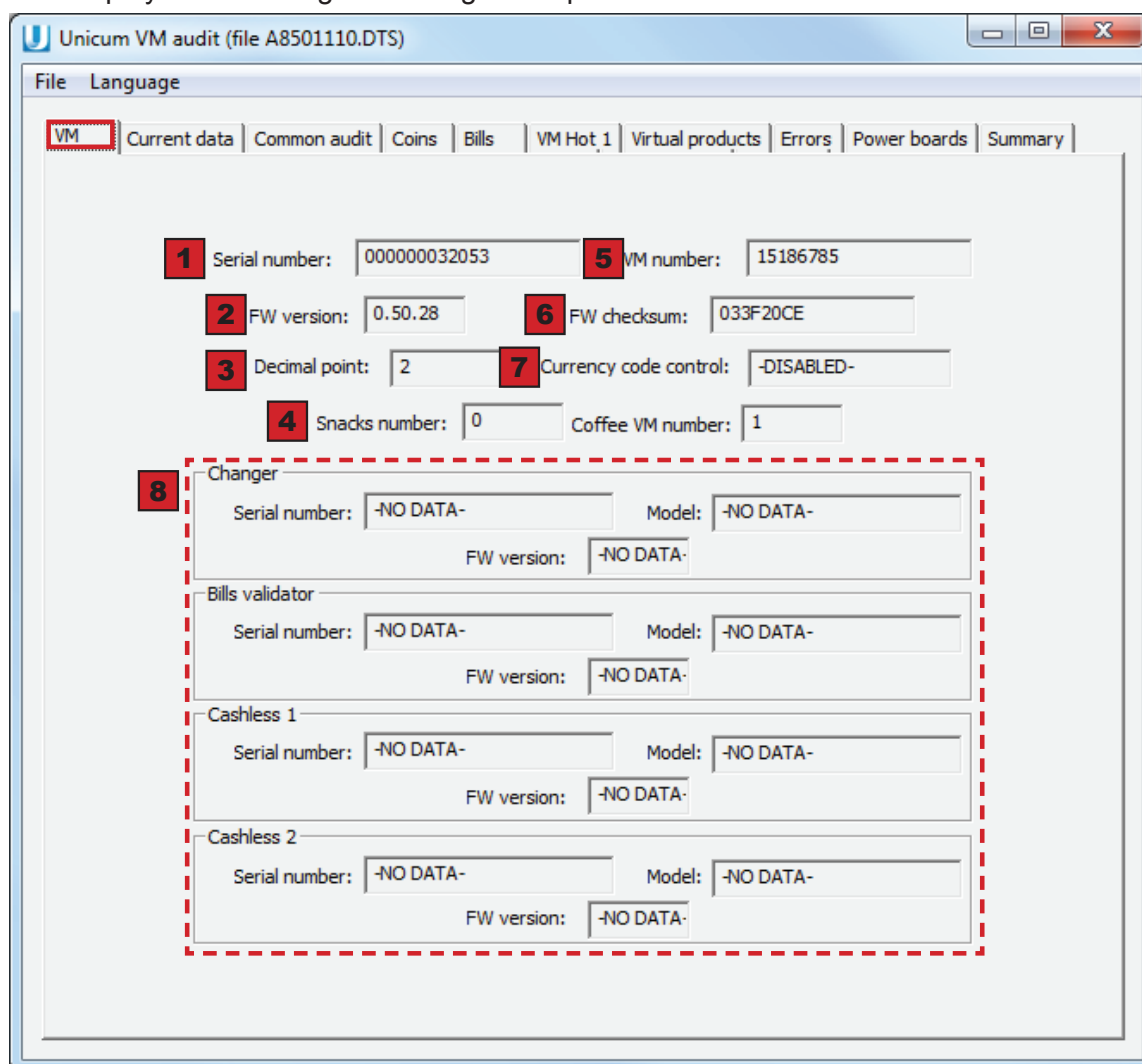


Figure 2.2

3.0 TABS AND THEIR DESCRIPTION

3.1 VM (vending machine)

This tab displays the vending machine general parameters.



The screenshot shows the 'Unicum VM audit (file A8501110.DTS)' window. The 'VM' tab is selected, showing a menu bar with 'File' and 'Language'. Below the menu bar, there are tabs for 'Current data', 'Common audit', 'Coins', 'Bills', 'VM Hot 1', 'Virtual products', 'Errors', 'Power boards', and 'Summary'. The main area displays several parameters with their values:

- 1** Serial number: 000000032053
- 5** VM number: 15186785
- 2** FW version: 0.50.28
- 6** FW checksum: 033F20CE
- 3** Decimal point: 2
- 7** Currency code control: -DISABLED-
- 4** Snacks number: 0
- Coffee VM number: 1
- 8** Changer: Serial number: -NO DATA-, Model: -NO DATA-, FW version: -NO DATA-
- Bills validator: Serial number: -NO DATA-, Model: -NO DATA-, FW version: -NO DATA-
- Cashless 1: Serial number: -NO DATA-, Model: -NO DATA-, FW version: -NO DATA-
- Cashless 2: Serial number: -NO DATA-, Model: -NO DATA-, FW version: -NO DATA-

Figure 3.1

No	Name	Description
1	Serial number	Shows the 019 board (Main Board) serial number.
2	FM version	Shows the 019 board (Main Board) software version.
3	Decimal point	Displays the number of digits after the whole number in sums and prices.
4	Snacks number Coffee VM number	Displays the number of connected snack vending machine (SLAVE). Displays the number of connected drink vending machine.
5	VM number	Displays the vending machine number, specified in the vending machine settings.
6	FM checksum	Shows the 019 board (Main Board) checksum. For checking purposes.
7	Currency code control	Not used.
8	Changer Bills validator Cashless 1 Cashless 2	Displays the (changer, bills validator, cashless 1 and 2) serial number, model, and software version (if connected).



3.2 Current data

This tab displays the vending machine current statistics.

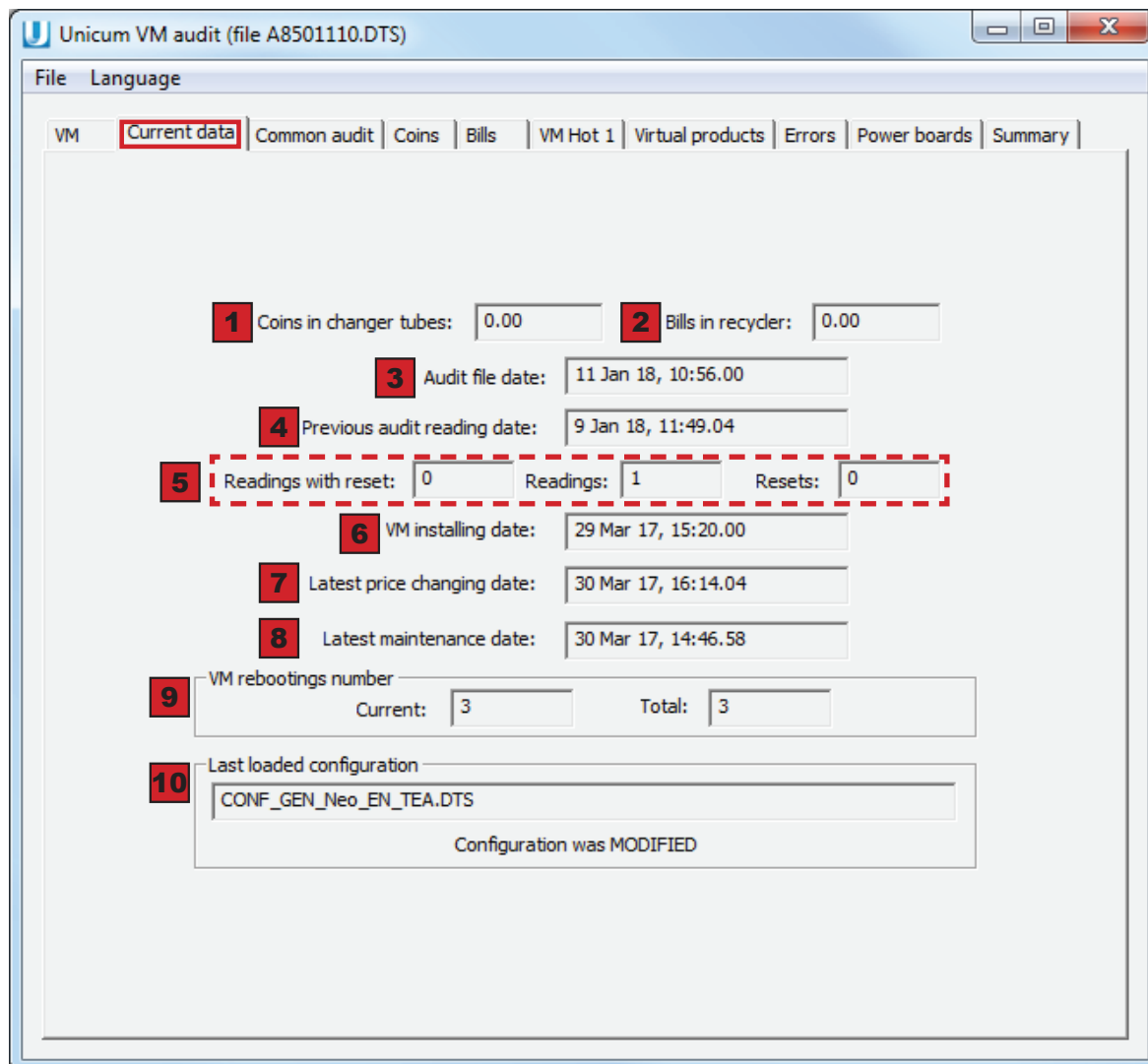


Figure 3.2

No	Name	Description
1	Coins in changer tubes	Displays a sum of coins in the coin drawer tubes without considering the hidden coins.
2	Bills in recycler	Displays a sum of bills in the bill acceptor recycler.
3	Audit file date	Displays date and time of audit file record time by the vending machine clock (if the clock is set).
4	Previous audit reading date	Displays date and time of the previous audit file reading (i.e. the date when the previous audit file was read from the vending machine).
5	Readings with reset	Displays the number of reads of the audit file with the resettable counters zeroing.
	Readings	Displays the number of audit files reads.
	Resets	Displays the number of executed resettable counters zeroings. If instead of the non-resettable counters the resettable counters are used, it's recommended to check this number against the number from the previous file (it should be increased by 1 sharp).

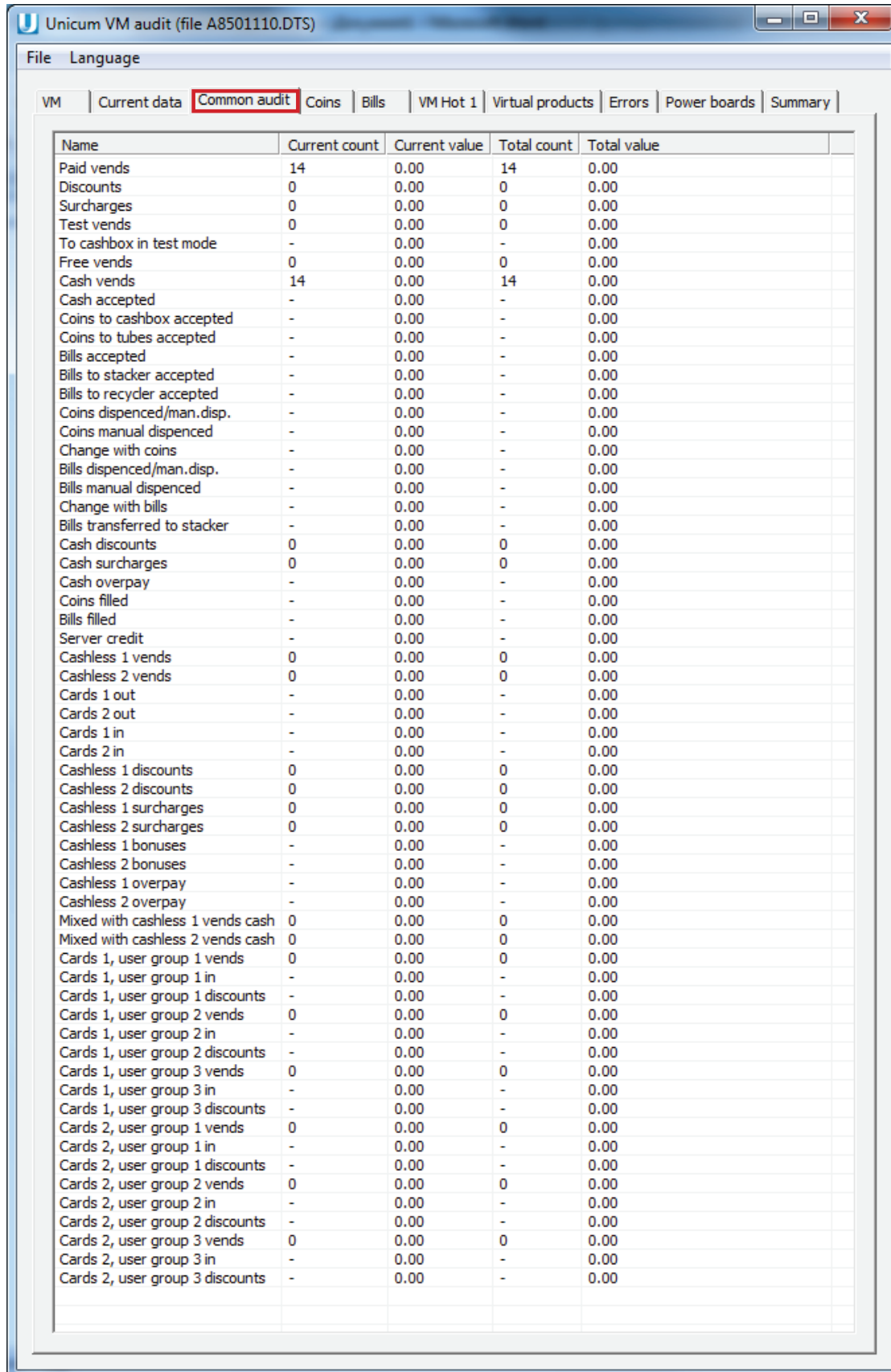


No	Name	Description
6	VM installing date	Displays the vending machine installation date and time. Here the time that was set via the vending machine menu for the first time is saved.
7	Latest price changing date	Displays the last price change date and time.
8	Latest maintenance date	Displays the last maintenance date and time Here the operator menu entry time is recorded.
9	VM rebootings number	Displays the number of vending machine reboots: Current - reboots after the last resettable counters zeroing; Total - reboots for all the time of the vending machine operation.
10	Last loaded configuration	Displays the full name of the configuration file, from which the last loading of settings was carried out. Here it's displayed whether the settings were changed after loading via the menu or not.



3.3 Common audit

This tab displays the vending machine general statistics.



Name	Current count	Current value	Total count	Total value
Paid vends	14	0.00	14	0.00
Discounts	0	0.00	0	0.00
Surcharges	0	0.00	0	0.00
Test vends	0	0.00	0	0.00
To cashbox in test mode	-	0.00	-	0.00
Free vends	0	0.00	0	0.00
Cash vends	14	0.00	14	0.00
Cash accepted	-	0.00	-	0.00
Coins to cashbox accepted	-	0.00	-	0.00
Coins to tubes accepted	-	0.00	-	0.00
Bills accepted	-	0.00	-	0.00
Bills to stacker accepted	-	0.00	-	0.00
Bills to recycler accepted	-	0.00	-	0.00
Coins dispenced/man. disp.	-	0.00	-	0.00
Coins manual dispenced	-	0.00	-	0.00
Change with coins	-	0.00	-	0.00
Bills dispenced/man. disp.	-	0.00	-	0.00
Bills manual dispenced	-	0.00	-	0.00
Change with bills	-	0.00	-	0.00
Bills transferred to stacker	-	0.00	-	0.00
Cash discounts	0	0.00	0	0.00
Cash surcharges	0	0.00	0	0.00
Cash overpay	-	0.00	-	0.00
Coins filled	-	0.00	-	0.00
Bills filled	-	0.00	-	0.00
Server credit	-	0.00	-	0.00
Cashless 1 vends	0	0.00	0	0.00
Cashless 2 vends	0	0.00	0	0.00
Cards 1 out	-	0.00	-	0.00
Cards 2 out	-	0.00	-	0.00
Cards 1 in	-	0.00	-	0.00
Cards 2 in	-	0.00	-	0.00
Cashless 1 discounts	0	0.00	0	0.00
Cashless 2 discounts	0	0.00	0	0.00
Cashless 1 surcharges	0	0.00	0	0.00
Cashless 2 surcharges	0	0.00	0	0.00
Cashless 1 bonuses	-	0.00	-	0.00
Cashless 2 bonuses	-	0.00	-	0.00
Cashless 1 overpay	-	0.00	-	0.00
Cashless 2 overpay	-	0.00	-	0.00
Mixed with cashless 1 vends cash	0	0.00	0	0.00
Mixed with cashless 2 vends cash	0	0.00	0	0.00
Cards 1, user group 1 vends	0	0.00	0	0.00
Cards 1, user group 1 in	-	0.00	-	0.00
Cards 1, user group 1 discounts	-	0.00	-	0.00
Cards 1, user group 2 vends	0	0.00	0	0.00
Cards 1, user group 2 in	-	0.00	-	0.00
Cards 1, user group 2 discounts	-	0.00	-	0.00
Cards 1, user group 3 vends	0	0.00	0	0.00
Cards 1, user group 3 in	-	0.00	-	0.00
Cards 1, user group 3 discounts	-	0.00	-	0.00
Cards 2, user group 1 vends	0	0.00	0	0.00
Cards 2, user group 1 in	-	0.00	-	0.00
Cards 2, user group 1 discounts	-	0.00	-	0.00
Cards 2, user group 2 vends	0	0.00	0	0.00
Cards 2, user group 2 in	-	0.00	-	0.00
Cards 2, user group 2 discounts	-	0.00	-	0.00
Cards 2, user group 3 vends	0	0.00	0	0.00
Cards 2, user group 3 in	-	0.00	-	0.00
Cards 2, user group 3 discounts	-	0.00	-	0.00

Figure 3.3



In the table the following information is displayed:

By columns

Name - the audit parameter.

Current count - a number of carried out operations after the last zeroing of the counters.

Current value - a sum of operations (the operation is displayed in the row), carried out after the last zeroing of the counters.

Total count - a number of conducted operations for all the time of the vending machine operation.

Total value - a sum of operations (the operation is displayed in the row), carried out for all the time of the vending machine operation.

By rows

Paid vends - a general number and a number of sales, carried out for cash/server credit/by card. Here the sales at the set price = 0 are also taken into account. This row ignores sales, carried out at the free price list, i.e. by free tokens or free cards), or by test price list (test sales in the menu, sales in the test mode, and sales by test cards).

Discounts - a number and a sum of the discounts made.

Surcharges - a number and a sum of the markups made.

Test vends - a number and a sum of sales, carried out via the menu / in the test mode / by test cards. The sum is calculated by cash price list.

To cashbox in test mode - this counter is present to support the older versions of the vending machine software. In new software it's always equal to zero.

Free vends - a number and a sum of sales, carried out by tokens or free cards. When using the free cards the sum is calculated for the cash price list. When using tokens - by the price list, functioning at the moment of sale (depends on whether the card is brought near).

Cash vends - specify a number and a cost of all sales for cash and server credit, as well as all types of mixed sales, in which cash and/or server credit were used.

Cash accepted - a sum of all accepted cash (including coins and bills, including both tubes/recycler and cashbox/stacker, including both maintenance/loading mode, as well as sales mode, including the money that both remained in the vending machine and were given out as change/retrieved, including hidden coins).

Coins to cashbox accepted - a sum of all coins, accepted to cashbox (including both maintenance/loading mode, as well as sales mode). This sum is subject for encashment, i.e. the collector should bring the gain in a form of coins in the amount, specified in this field (it's implied that the money used by the collector for loading the change are not mixed with the gain).

Coins to tubes accepted - a sum of all coins, accepted to the coin drawer tubes (including both maintenance/loading mode, as well as sales mode, including the money that both remained in the vending machine and were given out as change/retrieved, including hidden coins).



Bills accepted - a sum of all accepted bills (including recycler and stacker, including both maintenance/loading mode, as well as sales mode, including the money that both remained in the vending machine and were given out as change/retrieved. A sum of this field and the **Bills transferred to stacker**) field is equal to the sum of the two following fields (**Bills to stacker accepted**) and (**Bills to recycler accepted**).

Bills to stacker accepted - a sum of all bills accepted to the stacker (including both maintenance/loading mode and the sales mode), as well as the transferred from the recycler to the stacker. This sum is subject for encashment, i.e. the collector should bring the gain in a form of bills in the amount, specified in this field (it's implied that the money used by the collector for loading the change are not mixed with the gain).

Bills to recycler accepted - a sum of all bills, accepted to the recycler (including both maintenance/loading mode, as well as sales mode, including the money that both remained in the vending machine and were given out as change/retrieved, including bills transferred from the recycler to the stacker.

Coins dispensed/man.disp. - the field is equal to the sum of the two following fields (**Coins manual dispensed**) and (**Change with coins**).

Coins manual dispensed - a sum of coins retrieved from the tubes (coins, retrieved by using the cash drawer buttons and coins, retrieved by using the operator menu commands).

Change with coins - a sum of coins dispensed to change.

Bills dispensed/man.disp - the field is equal to the sum of the two following fields (**Bills manual dispensed**) and (**Change with bills**).

Bills manual dispensed - a sum of bills retrieved from the recycler (bills, retrieved by using the recycler buttons and bills, retrieved by using the operator menu commands are taken into account). The bills transferred from the recycler to the stacker (by using buttons on the recycler) are not included.

Change with bills - a sum of bills dispensed to change.

Bills transferred to stacker - a sum of bills, transferred from the recycler to the stacker by using buttons on the recycler.

Cash discounts - a number and a sum of discounts, which are given when using the cash price list (without using cards).

Cash surcharges - a number and a sum of markups, which are given when using the cash price list (without using cards).

Cash overpay - a sum of lost cash. Cash is lost by timeout (setting), online monitoring instructions when exiting the menu, as well as when deactivating the vending machine, if the energy-independent credit is prohibited. This sum also includes cash, written off for faulty sales in the situations when the refund for failure was prohibited by the settings.

Coin filled - a sum of coins, accepted to the coin drawer (both to the tubes and the cashbox, but NOT CONSIDERING the coins, rejected to change) in the coin drawer loading mode (via the operator menu).

Bills filled - a sum of bills, accepted to the bill acceptor (both to the recycler and the stacker, but NOT CONSIDERING the rejected bills) in the bill acceptor loading mode (via the operator menu).

Server credit - a credit sum, accepted from the server, and used up for the sale and card replenishment (including bonuses, accrued by the server to the cards).



Cashless 1 vends - a number and a sum of sales, spent from the cards, brought to the MDB-reader 1 (the reader with the MDB-address of 0x10).

Cashless 2 vends - a number and a sum of sales, spent from the cards, brought to the MDB-reader 2 (the reader with the MDB-address of 0x60), or to the RS232 reader.

Cards 1 out & Cards 2 out - a sum, written off the cards via the MDB-reader 1(2). Includes a sum of sales, as well as a sum of non-returned money for faulty sales or for power offs during the sales.

Cards 1 in & Cards 2 in - a sum of replenishments via the MDB-reader 1(2). Includes a sum of replenishment by using cash, a sum of replenishments by using the server credit (including bonuses of the online monitoring server) and a sum of bonuses, credited by the vending machine (controlled by the vending machine settings).

Cashless 1 discounts & Cashless 2 discounts - a sum and a number of discounts, granted by cards, brought to the reader 1(2). Here apply all discounts, granted by the vending machine in accordance with the cashless price list, as well as discounts granted by the reader itself or the card (provided that the reader informs the vending machine about the granted discount).

Cashless 1 surcharges & Cashless 2 surcharges - a sum and a number of markups, granted by cards, brought to the reader 1(2). Here apply all markups, granted by the vending machine in accordance with the cashless price list, as well as markups granted by the reader itself or the card (provided that the reader informs the vending machine about the granted markup).

Cashless 1 bonuses & Cashless 2 bonuses - a sum of bonuses, granted by the vending machine to the cards, brought to the MDB reader 1(2). Only the bonuses granted by the vending machine are included. Bonuses, granted by the server of bonuses, granted by the reader are not taken into account by this counter.

Cashless 1 overpay & Cashless 2 overpay-- a sum, withdrawn from cards by the reader 1(2), which was lost (which was not returned to the cards for some reason after a faulty sale, and at that wasn't spent for other purchases).

Mixed with cashless 1 vends cash & Mixed with cashless 2 vends cash - a number of mixed sales (with the use of cards on the reader 1(2) together with cash and/or server credit), as well as the sum, spent from cash and server credit for such sales.

Cards X, user group Y vends - a number and a sum, retrieved from the reader X cards via cashless price list Y (X – the reader 1 or 2 number, Y – the number of the user group that is programmed for the card - from 1 to 3, this corresponds to the price list number).

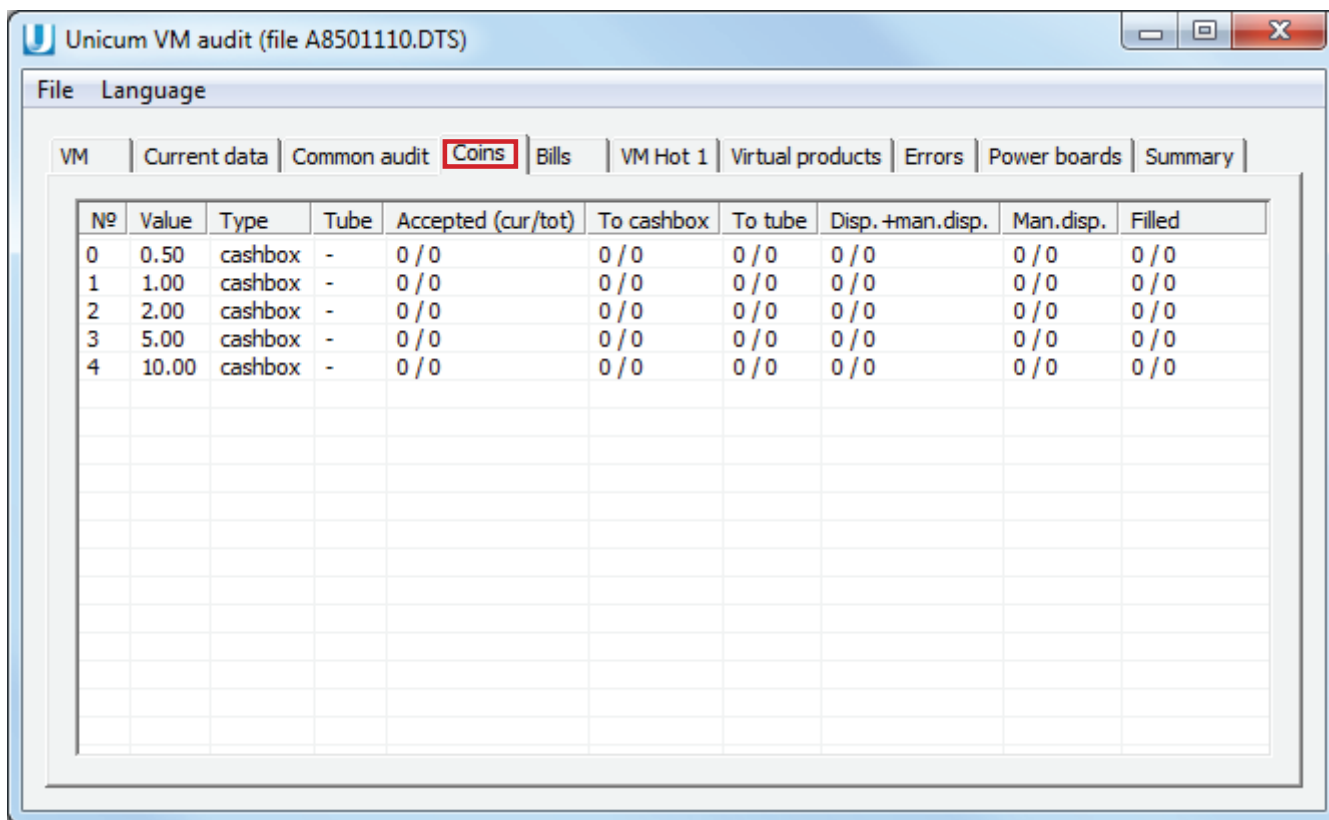
Cards X, user group Y in - a number and a sum of card replenishment by the reader X via cashless price list Y (X – the reader 1 or 2 number, Y – the number of the user group that is programmed for the card - from 1 to 3, this corresponds to the price list number).

Cards X, user group Y discounts - a number and a sum of discounts, granted to the reader X cards via cashless price list Y. Here apply all discounts, granted by the vending machine in accordance with the cashless price list, as well as discounts, granted by the reader itself or the card.



3.4 Coins

The tab displays the report on the vending machine coins.



Nº	Value	Type	Tube	Accepted (cur/tot)	To cashbox	To tube	Disp. +man.disp.	Man.disp.	Filled
0	0.50	cashbox	-	0 / 0	0 / 0	0 / 0	0 / 0	0 / 0	0 / 0
1	1.00	cashbox	-	0 / 0	0 / 0	0 / 0	0 / 0	0 / 0	0 / 0
2	2.00	cashbox	-	0 / 0	0 / 0	0 / 0	0 / 0	0 / 0	0 / 0
3	5.00	cashbox	-	0 / 0	0 / 0	0 / 0	0 / 0	0 / 0	0 / 0
4	10.00	cashbox	-	0 / 0	0 / 0	0 / 0	0 / 0	0 / 0	0 / 0

Figure 3.4

In the table the following information is displayed:

By columns

Value - coin denomination.

Type - shows if there's a tube for this coin or not (if there's no tube for the coin a word кешбокс (cash-box) is displayed / if there's a tube - the word (TUBE) is displayed).

Tube - for tubed coins shows the number of coins in this tube as of the time of reading the audio file from the vending machine (excluding the hidden coins).

Accepted (cur/tot) - resettable and non-resettable counters of the accepted coins by each denomination (including both tubes and cashbox, including both maintenance/loading mode, as well as sales mode, including the money that both remained in the vending machine and were given out as change/retrieved, including hidden coins).

To cashbox - resettable and non-resettable counters of coins, accepted to the cashbox only by each denomination (including both maintenance/loading mode, as well as the sales mode).

To tube - resettable and non-resettable counters of the coins, accepted to the tube only by each denomination (including both tubes and cashbox, including both including both maintenance/loading mode, as well as sales mode, including the money that both remained in the vending machine and were given out as change/retrieved, including hidden coins).



Disp. + man.disp. - resettable and non-resettable counters of coins, retrieved from the tubes (coins, retrieved by using the cash drawer buttons and coins, retrieved by using the operator menu commands are taken into account) and given out as change.

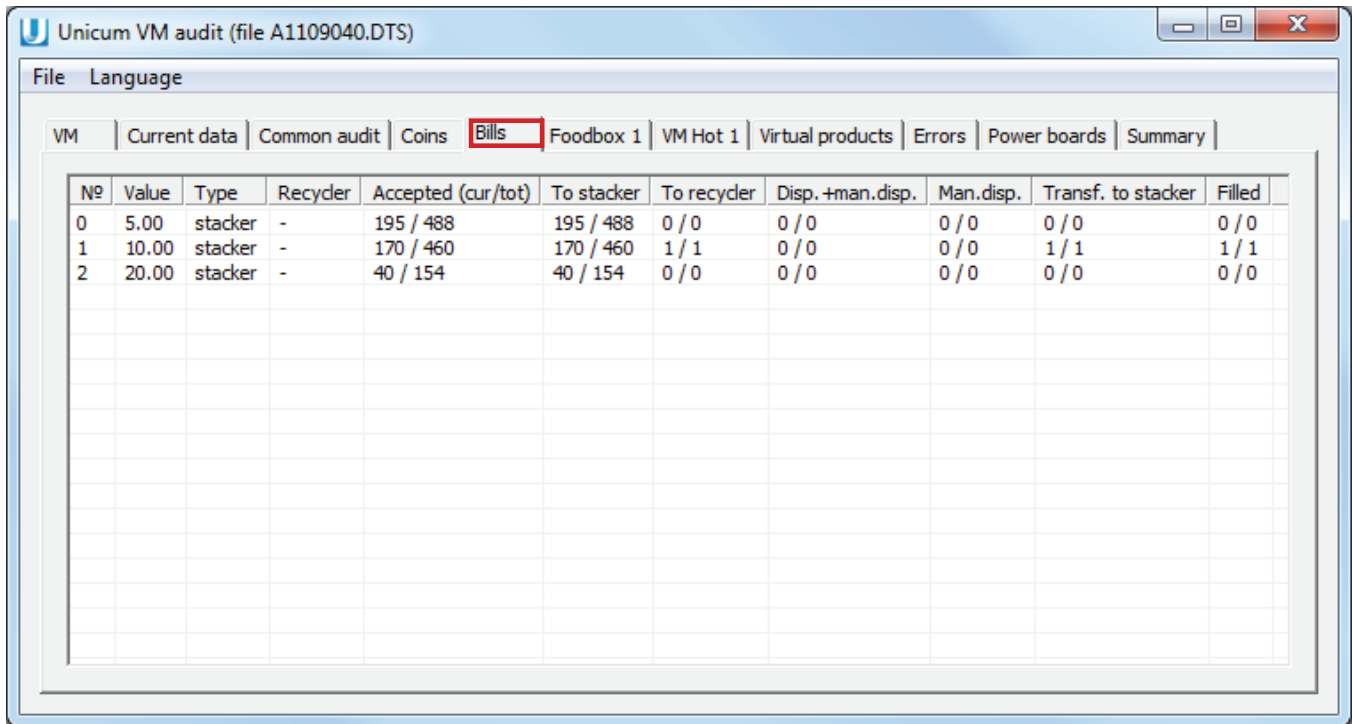
Man.disp. - resettable and non-resettable counters of coins, retrieved from the tubes (coins, retrieved by using the cash drawer buttons and coins, retrieved by using the operator menu commands are taken into account).

Filled - resettable and non-resettable counters of coins, accepted to the coin drawer (both to the tubes and the cashbox, but NOT CONSIDERING the coins, rejected to change) in the coin drawer loading mode (via the operator menu).



3.5 Bills

The tab displays the report on the vending machine bills.



Nº	Value	Type	Recycler	Accepted (cur/tot)	To stacker	To recycler	Disp. +man.disp.	Man.disp.	Transf. to stacker	Filled
0	5.00	stacker	-	195 / 488	195 / 488	0 / 0	0 / 0	0 / 0	0 / 0	0 / 0
1	10.00	stacker	-	170 / 460	170 / 460	1 / 1	0 / 0	0 / 0	1 / 1	1 / 1
2	20.00	stacker	-	40 / 154	40 / 154	0 / 0	0 / 0	0 / 0	0 / 0	0 / 0

Figure 3.5

In the table the following information is displayed:

By columns

Value - bill denomination.

Type - displays whether this bill is in the recycler or not (the possible options are: recycler / stacker / ? / NO DATA).

Recycler - for bills, accepted to the recycler, displays the number of bills in the recycler at the moment of reading the audit file from the vending machine.

Accepted (cur/tot) - resettable and non-resettable counters of the accepted bills by each denomination (including both recycler and stacker, including both maintenance/loading mode, as well as sales mode, including the money that both remained in the vending machine and were given out as change/retrieved).

To stacker - resettable and non-resettable counters of bills accepted to the stacker (including both maintenance/loading mode and the sales mode), as well as the transferred from the recycler to the stacker.

To recycler - resettable and non-resettable counters of bills, accepted to the recycler (including both maintenance/loading mode, as well as sales mode, including the money that both remained in the vending machine and were given out as change/retrieved, including bills transferred from the recycler to the stacker.



Disp. + man.disp. - resettable and non-resettable counters of bills, given out as change, plus retrieved from the recycler (bills, retrieved by using the recycler buttons and bills, retrieved by using the operator menu commands are taken into account). The bills transferred from the recycler to the stacker (by using buttons on the recycler) are NOT included.

Man. disp. - resettable and non-resettable counters of bills, retrieved from the recycler (bills, retrieved by using the recycler buttons and bills, retrieved by using the operator menu commands are taken into account). The bills transferred from the recycler to the stacker (by using buttons on the recycler) are NOT included.

Transf. to stacker - resettable and non-resettable counters of bills, transferred from the recycler to the stacker by using the recycler buttons.

Filled - resettable and non-resettable counters of bills, accepted to the bill acceptor (both to the recycler and the stacker, but NOT CONSIDERING the bills, rejected by the vending machine) in the bill acceptor loading mode (via the operator menu).



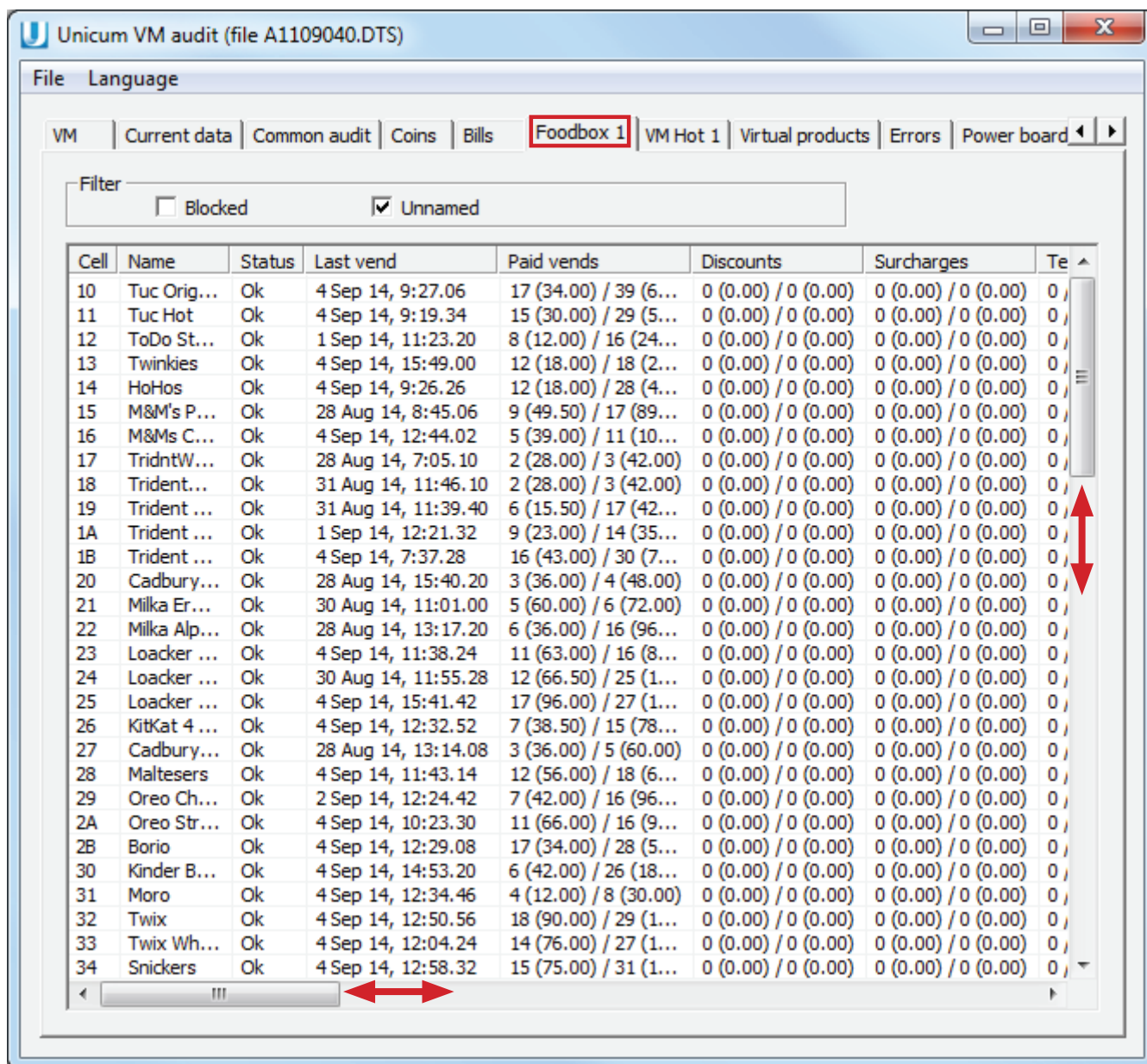
3.6 Foodbox 1, Foodbox 2, VM Hot 1 & Virtual products

These tabs display the audit data by each product sale individually.

The tabs are opened only after reading the audit file. At that after reading the file only the tabs for which the information about the products is contained in the audit file will be available for viewing.

E.g. when reading the snack vending machine audit file only the **Foodbox 1** tab will open.

The **Virtual products** tab will open only if the audit file is retrieved from the vending machine, on which the new software is installed.



Cell	Name	Status	Last vend	Paid vends	Discounts	Surcharges	Te
10	Tuc Orig...	Ok	4 Sep 14, 9:27.06	17 (34.00) / 39 (6...	0 (0.00) / 0 (0.00)	0 (0.00) / 0 (0.00)	0
11	Tuc Hot	Ok	4 Sep 14, 9:19.34	15 (30.00) / 29 (5...	0 (0.00) / 0 (0.00)	0 (0.00) / 0 (0.00)	0
12	ToDo St...	Ok	1 Sep 14, 11:23.20	8 (12.00) / 16 (24...	0 (0.00) / 0 (0.00)	0 (0.00) / 0 (0.00)	0
13	Twinkies	Ok	4 Sep 14, 15:49.00	12 (18.00) / 18 (2...	0 (0.00) / 0 (0.00)	0 (0.00) / 0 (0.00)	0
14	HoHos	Ok	4 Sep 14, 9:26.26	12 (18.00) / 28 (4...	0 (0.00) / 0 (0.00)	0 (0.00) / 0 (0.00)	0
15	M&M's P...	Ok	28 Aug 14, 8:45.06	9 (49.50) / 17 (89...	0 (0.00) / 0 (0.00)	0 (0.00) / 0 (0.00)	0
16	M&M's C...	Ok	4 Sep 14, 12:44.02	5 (39.00) / 11 (10...	0 (0.00) / 0 (0.00)	0 (0.00) / 0 (0.00)	0
17	TridentW...	Ok	28 Aug 14, 7:05.10	2 (28.00) / 3 (42.00)	0 (0.00) / 0 (0.00)	0 (0.00) / 0 (0.00)	0
18	Trident...	Ok	31 Aug 14, 11:46.10	2 (28.00) / 3 (42.00)	0 (0.00) / 0 (0.00)	0 (0.00) / 0 (0.00)	0
19	Trident ...	Ok	31 Aug 14, 11:39.40	6 (15.50) / 17 (42...	0 (0.00) / 0 (0.00)	0 (0.00) / 0 (0.00)	0
1A	Trident ...	Ok	1 Sep 14, 12:21.32	9 (23.00) / 14 (35...	0 (0.00) / 0 (0.00)	0 (0.00) / 0 (0.00)	0
1B	Trident ...	Ok	4 Sep 14, 7:37.28	16 (43.00) / 30 (7...	0 (0.00) / 0 (0.00)	0 (0.00) / 0 (0.00)	0
20	Cadbury...	Ok	28 Aug 14, 15:40.20	3 (36.00) / 4 (48.00)	0 (0.00) / 0 (0.00)	0 (0.00) / 0 (0.00)	0
21	Milka Er...	Ok	30 Aug 14, 11:01.00	5 (60.00) / 6 (72.00)	0 (0.00) / 0 (0.00)	0 (0.00) / 0 (0.00)	0
22	Milka Alp...	Ok	28 Aug 14, 13:17.20	6 (36.00) / 16 (96...	0 (0.00) / 0 (0.00)	0 (0.00) / 0 (0.00)	0
23	Loacker ...	Ok	4 Sep 14, 11:38.24	11 (63.00) / 16 (8...	0 (0.00) / 0 (0.00)	0 (0.00) / 0 (0.00)	0
24	Loacker ...	Ok	30 Aug 14, 11:55.28	12 (66.50) / 25 (1...	0 (0.00) / 0 (0.00)	0 (0.00) / 0 (0.00)	0
25	Loacker ...	Ok	4 Sep 14, 15:41.42	17 (96.00) / 27 (1...	0 (0.00) / 0 (0.00)	0 (0.00) / 0 (0.00)	0
26	KitKat 4 ...	Ok	4 Sep 14, 12:32.52	7 (38.50) / 15 (78...	0 (0.00) / 0 (0.00)	0 (0.00) / 0 (0.00)	0
27	Cadbury...	Ok	28 Aug 14, 13:14.08	3 (36.00) / 5 (60.00)	0 (0.00) / 0 (0.00)	0 (0.00) / 0 (0.00)	0
28	Maltesers	Ok	4 Sep 14, 11:43.14	12 (56.00) / 18 (6...	0 (0.00) / 0 (0.00)	0 (0.00) / 0 (0.00)	0
29	Oreo Ch...	Ok	2 Sep 14, 12:24.42	7 (42.00) / 16 (96...	0 (0.00) / 0 (0.00)	0 (0.00) / 0 (0.00)	0
2A	Oreo Str...	Ok	4 Sep 14, 10:23.30	11 (66.00) / 16 (9...	0 (0.00) / 0 (0.00)	0 (0.00) / 0 (0.00)	0
2B	Borio	Ok	4 Sep 14, 12:29.08	17 (34.00) / 28 (5...	0 (0.00) / 0 (0.00)	0 (0.00) / 0 (0.00)	0
30	Kinder B...	Ok	4 Sep 14, 14:53.20	6 (42.00) / 26 (18...	0 (0.00) / 0 (0.00)	0 (0.00) / 0 (0.00)	0
31	Moro	Ok	4 Sep 14, 12:34.46	4 (12.00) / 8 (30.00)	0 (0.00) / 0 (0.00)	0 (0.00) / 0 (0.00)	0
32	Twix	Ok	4 Sep 14, 12:50.56	18 (90.00) / 29 (1...	0 (0.00) / 0 (0.00)	0 (0.00) / 0 (0.00)	0
33	Twix Wh...	Ok	4 Sep 14, 12:04.24	14 (76.00) / 27 (1...	0 (0.00) / 0 (0.00)	0 (0.00) / 0 (0.00)	0
34	Snickers	Ok	4 Sep 14, 12:58.32	15 (75.00) / 31 (1...	0 (0.00) / 0 (0.00)	0 (0.00) / 0 (0.00)	0

Figure 3.6a - Foodbox



Unicum VM audit (file A1109040.DTS)

File Language

VM | Current data | Common audit | Coins | Bills | Foodbox 1 | **VM Hot 1** | Virtual products | Errors | Power board

Filter

☐ Blocked ☒ Unnamed

Cell	Name	Status	Last vend	Paid vends	Discounts	Surcharges	Tests
1	1	Ok	1 Sep 14, 13:51.16	10 (70.00) / 44 (308.00)	0 (0.00) / 0 (0.00)	0 (0.00) / 0 (0.00)	0 / 1
2	2	Ok	-	0 (0.00) / 4 (34.00)	0 (0.00) / 0 (0.00)	0 (0.00) / 0 (0.00)	0 / 0
3	3	Ok	-	0 (0.00) / 5 (47.50)	0 (0.00) / 0 (0.00)	0 (0.00) / 0 (0.00)	0 / 0
4	4	Ok	2 Sep 14, 8:52.30	2 (14.00) / 7 (49.00)	0 (0.00) / 0 (0.00)	0 (0.00) / 0 (0.00)	0 / 0
5	5	Ok	28 Aug 14, 7:27.08	2 (19.00) / 14 (133.00)	0 (0.00) / 0 (0.00)	0 (0.00) / 0 (0.00)	0 / 0
6	6	Ok	31 Aug 14, 11:13.18	1 (9.00) / 8 (72.00)	0 (0.00) / 0 (0.00)	0 (0.00) / 0 (0.00)	0 / 0
7	7	Ok	-	0 (0.00) / 6 (57.00)	0 (0.00) / 0 (0.00)	0 (0.00) / 0 (0.00)	0 / 0
8	8	Ok	2 Sep 14, 12:26.24	17 (170.00) / 69 (690.00)	0 (0.00) / 0 (0.00)	0 (0.00) / 0 (0.00)	1 / 3
9	9	Ok	26 Aug 14, 9:59.56	2 (24.00) / 43 (416.00)	0 (0.00) / 0 (0.00)	0 (0.00) / 0 (0.00)	0 / 4
10	10	Ok	28 Aug 14, 16:15.26	13 (136.50) / 69 (692.50)	0 (0.00) / 0 (0.00)	0 (0.00) / 0 (0.00)	2 / 5
11	11	Ok	2 Sep 14, 12:17.54	5 (65.00) / 81 (911.00)	0 (0.00) / 0 (0.00)	0 (0.00) / 0 (0.00)	2 / 5
12	12	Ok	27 Aug 14, 10:07.54	3 (37.50) / 17 (199.50)	0 (0.00) / 0 (0.00)	0 (0.00) / 0 (0.00)	0 / 2
13	13	Ok	28 Aug 14, 13:23.18	2 (28.00) / 8 (103.00)	0 (0.00) / 0 (0.00)	0 (0.00) / 0 (0.00)	0 / 1
14	14	Ok	31 Aug 14, 7:52.08	16 (80.00) / 66 (330.00)	0 (0.00) / 0 (0.00)	0 (0.00) / 0 (0.00)	0 / 5
15	15	Ok	28 Aug 14, 15:20.46	3 (18.00) / 23 (138.00)	0 (0.00) / 0 (0.00)	0 (0.00) / 0 (0.00)	1 / 2
16	16	Ok	31 Aug 14, 13:04.44	3 (19.50) / 8 (52.00)	0 (0.00) / 0 (0.00)	0 (0.00) / 0 (0.00)	0 / 0

Figure 3.6b - VM Hot 1



In the table the following information is displayed:

By columns

Cell - a cell number. For snack vending machines here the product cell number from 11 to 88 is specified (regardless of the 2 digit / 3 digit setting), for snack vending machines with wide shelves (LONG models) the product cell number from 10 to 8B is specified (regardless of the 2 digit / 3 digit setting). For drink vending machines the drink button number from 1 to 16 is specified. For virtual products, the "T" letter is used for designating the sale on the ROSSO TOUCH, ROSSO TOUCH TO GO payment terminal, cell 99 - combo 1, cell 98 - combo 2, cell 97 - combo 3, cell 96 - combo 4.

Name - the cell name programmed in the vending machine settings.

Status - specifies whether the cell is enabled in the menu OK or disabled – BLOCKED.

Last vend - date and time of the last sale of the cell acc. to the vending machine clock. The date is deleted at each resettable counters reset. If after the previous reset of the resettable counters the cell didn't sell, then this field will be empty. This field will also be empty if the cell was sold at the moment when the vending machine clock wasn't set.

Paid vends - a number and a sum (resettable and non-resettable counters) of sales, carried out for cash / server credit / by cards. Even the sales at the price of 0 are included. Here only the sales, carried out at the free price list, i.e. by free tokens or free cards), or by test price list (test sales in the menu, sales in the test mode, sales by test cards) are included.

Discounts - a number and a sum (resettable and non-resettable counters) of the discounts granted. Discounts can be carried out in accordance with the schedule by the price list, as well as granted by cashless payment systems (in the case when the reader informs the vending machine about the discount granted), can be granted in the case of impossibility to write off an exact sum from the card (because of the scaling factor that is aliquant to price) or can be programmed in combo sales.

Surcharges - a number and a sum (resettable and non-resettable counters) of the markups granted. Markups can be carried out in accordance with the schedule by the price list, as well as granted by cashless payment systems (in the case when the reader informs the vending machine about the markup granted) or can be programmed in combo sales.

Tests - a number and a sum (resettable and non-resettable counters) of sales, carried out via the menu / in test mode / by using test cards. The sum is calculated by cash price list.

Free - a number and a sum (resettable and non-resettable counters) of sales, carried out by tokens or free cards. When using the free cards the sum is calculated for the cash price list. When using tokens - by the price list, functioning at the moment of sale (depends on whether the card is brought near).

Mixed cash - a number (resettable and non-resettable counters) of mixed sales (with the use of cards together with cash and/or server credit), as well as the sum (resettable and non-resettable counters), spent by using cash and server credit on such sales.

Cash price - a price, programmed in the cash price list.

Cash vends - a number and a sum (resettable and non-resettable counters) of sales for cash and server credit, as well as all types of mixed sales (in which cash and/or server credit were used).

Cards user grp. 1 price - a price, programmed in the cashless price list.



Cards 1 user grp. 1 vends - a number of sales (resettable and non-resettable counters), carried out by a cashless price list 1 with the use of cards, brought to the 1-st MDB-reader (the reader with the MDB-address 0x10).

Cards 2 user grp. 1 vends - a number of sales (resettable and non-resettable counters), carried out by a cashless price list 1 with the use of cards, brought to the 2-nd MDB-reader (the reader with the MDB-address 0x16) or to the RS232 reader.

Cards user grp. 2 price - a price, programmed in the cashless price list.

Cards 1 user grp. 2 vends - a number of sales (resettable and non-resettable counters), carried out by a cashless price list 1 with the use of cards, brought to the 1-st MDB-reader (the reader with the MDB-address 0x10).

Card 2 user grp. 2 vends - a number of sales (resettable and non-resettable counters), carried out by a cashless price list 1 with the use of cards, brought to the 2-nd MDB-reader (the reader with the MDB-address 0x16) or to the RS232 reader.

Cards user grp. 3 price - a price, programmed in the cashless price list.

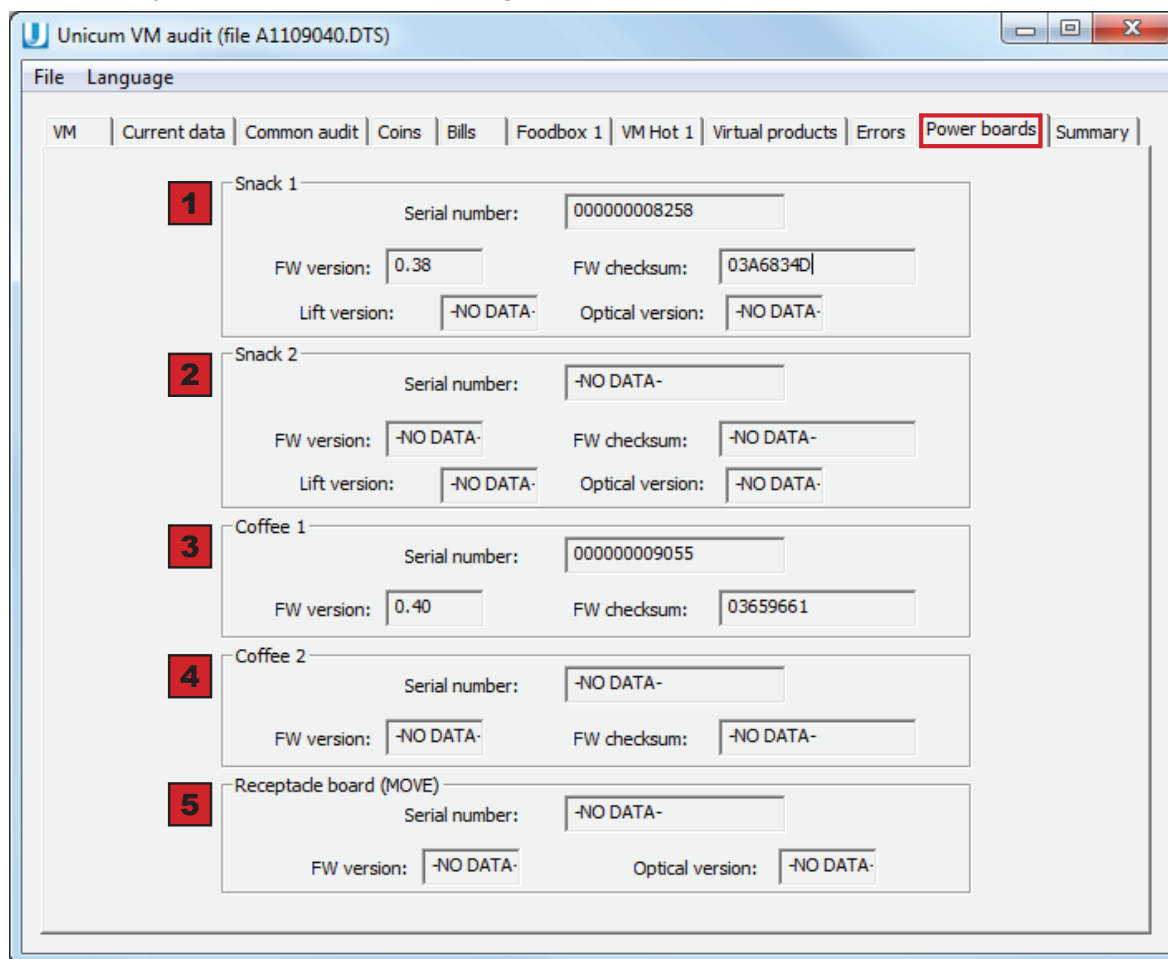
Cards 1 user grp. 3 vends - a number of sales (resettable and non-resettable counters), carried out by a cashless price list 1 with the use of cards, brought to the 1-st MDB-reader (the reader with the MDB-address 0x10).

Cards 2 user grp. 3 vends - a number of sales (resettable and non-resettable counters), carried out by a cashless price list 1 with the use of cards, brought to the 2-nd MDB-reader (the reader with the MDB-address 0x16) or to the RS232 reader.



3.8 Power board

The tab displays the report on the vending machine power board.



Unicum VM audit (file A1109040.DTS)

File Language

VM | Current data | Common audit | Coins | Bills | Foodbox 1 | VM Hot 1 | Virtual products | Errors | **Power boards** | Summary

1 Snack 1

Serial number: 000000008258

FW version: 0.38 FW checksum: 03A6834D

Lift version: -NO DATA- Optical version: -NO DATA-

2 Snack 2

Serial number: -NO DATA-

FW version: -NO DATA- FW checksum: -NO DATA-

Lift version: -NO DATA- Optical version: -NO DATA-

3 Coffee 1

Serial number: 000000009055

FW version: 0.40 FW checksum: 03659661

4 Coffee 2

Serial number: -NO DATA-

FW version: -NO DATA- FW checksum: -NO DATA-

5 Receptacle board (MOVE)

Serial number: -NO DATA-

FW version: -NO DATA- Optical version: -NO DATA-

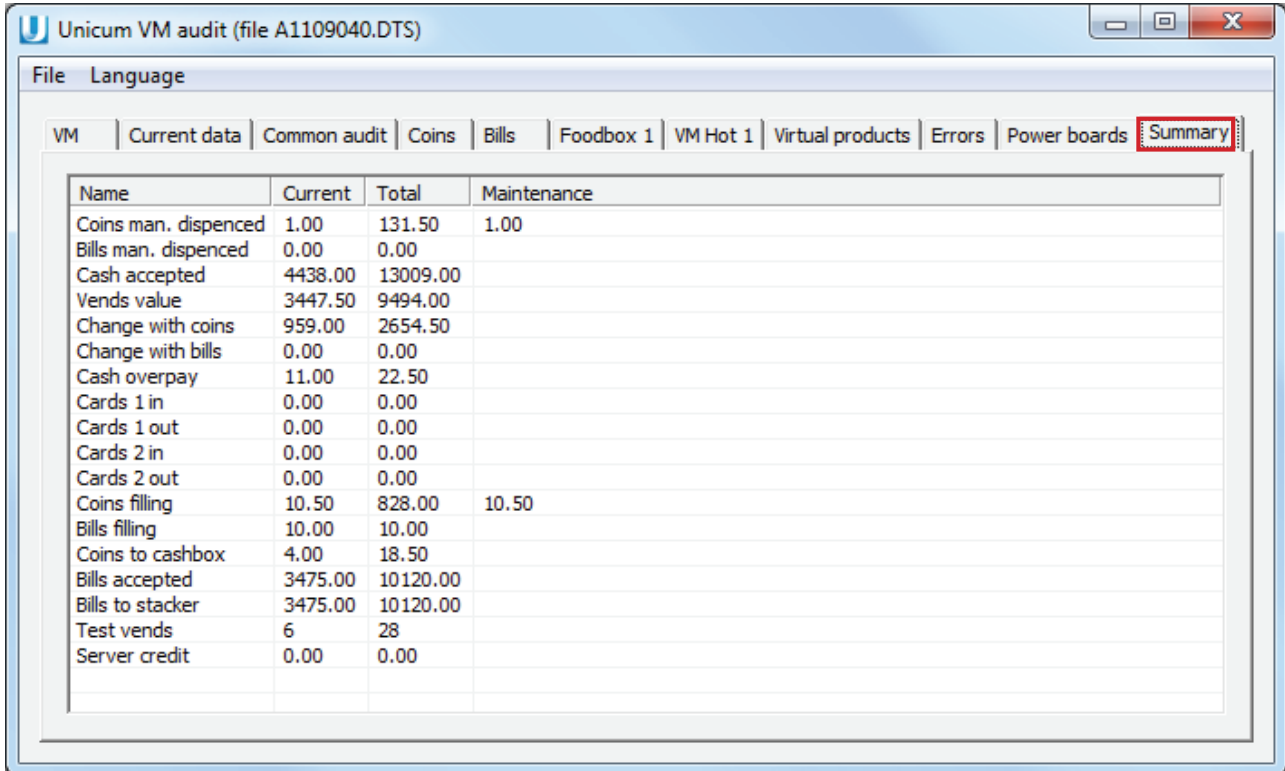
Figure 3.8

No	Name	Description
1	Snack 1	Displays the following (for snack vending machines): Power board serial number. Power board software version. Power board software checksum (for checking purposes). Lift board software version (for FOODBOX LIFT and MOVE models). Optical devices version (in the presence of optical sensors).
2	Snack 2	Displays the following (when connecting the second snack vending machine): Power board serial number. Power board software version. Power board software checksum (for checking purposes). Lift version (for FOODBOX LIFT model). Optical devices version (in the presence of optical sensors).
3	Coffee 1	Displays the number of connected drink vending machine. Power board serial number. Power board software version. Power board software checksum (for checking purposes).
4	Coffee 2	Not used
5	Receptacle board (MOVE)	Displays the following (for MOVE vending machine): Receptacle board / MOVE door serial number (board 033). Receptacle board / MOVE door software version. Receptacle optical devices version.



3.9 Summary

The tab displays the most important information from the previous tabs (from the **Common audit** tab).



Name	Current	Total	Maintenance
Coins man. dispenced	1.00	131.50	1.00
Bills man. dispenced	0.00	0.00	
Cash accepted	4438.00	13009.00	
Vends value	3447.50	9494.00	
Change with coins	959.00	2654.50	
Change with bills	0.00	0.00	
Cash overpay	11.00	22.50	
Cards 1 in	0.00	0.00	
Cards 1 out	0.00	0.00	
Cards 2 in	0.00	0.00	
Cards 2 out	0.00	0.00	
Coins filling	10.50	828.00	10.50
Bills filling	10.00	10.00	
Coins to cashbox	4.00	18.50	
Bills accepted	3475.00	10120.00	
Bills to stacker	3475.00	10120.00	
Test vends	6	28	
Server credit	0.00	0.00	

Figure 3.9

The tab has no new fields, but only repeats the most important fields of the previous tabs.

The description of the fields see in the previous sections (see above).