



FOODBOX SLAVE

SPARE PARTS CATALOGUE





Changes

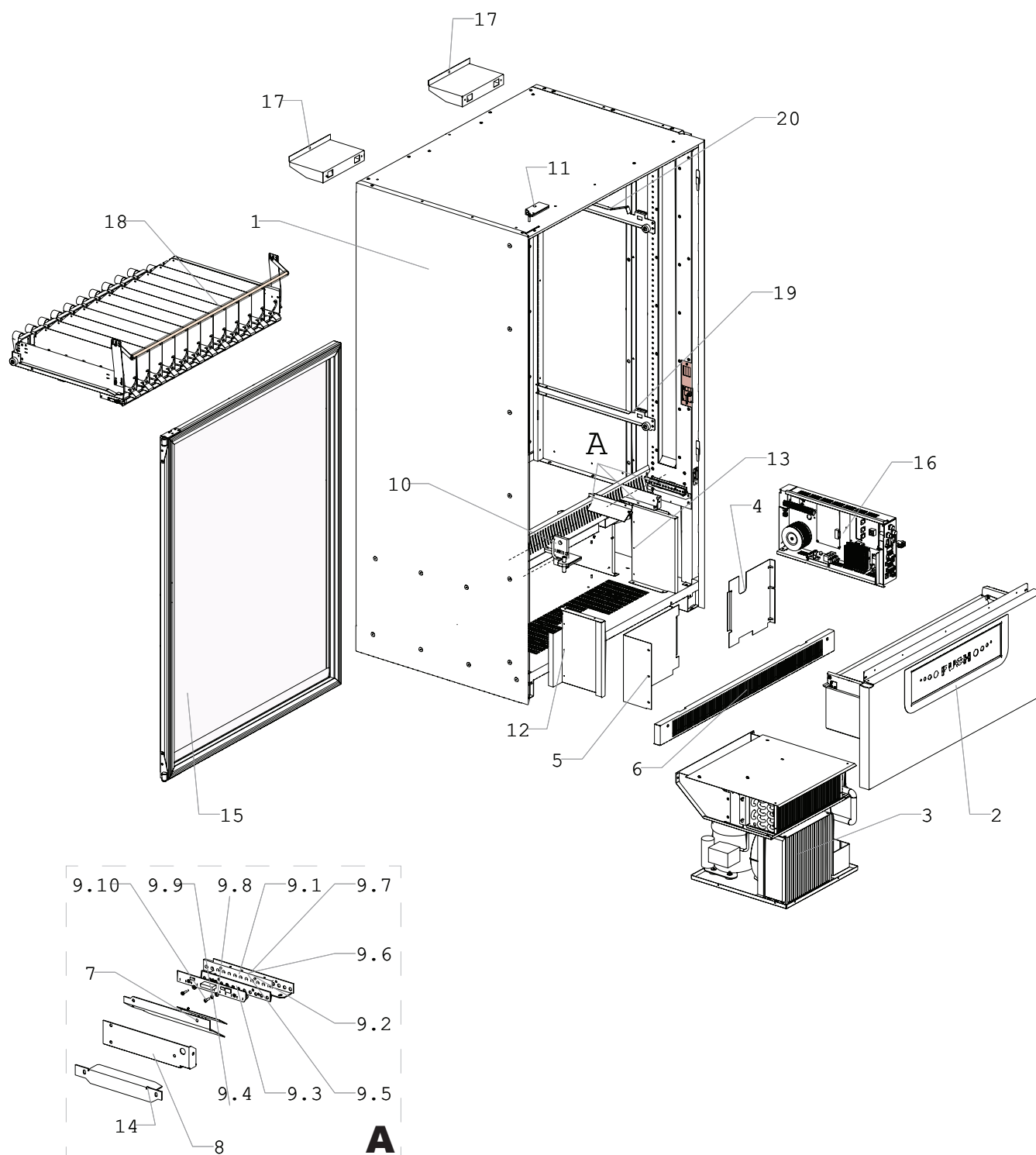
Version	Date	Brief description	Page
1.0	10.2015	Creation of the actual version of the document	-
1.1	03.2018	Updating catalogue	-



FIGURE	NAME	PAGE
01	SNACK DISPENSE MODULE	4
02	PRODUCT DISPENSING TRAY ASSEMBLY	6
03	“COMPONENTI” SHELF SET	8
04	POWER SUPPLY UNIT	11
05-A	COOLING UNIT_NEW	13
05-B	COOLING UNIT_OLD	15
06	COOLING SYSTEM WITH SIDE AIR DUCT	17

SNACK DISPENSE MODULE

01





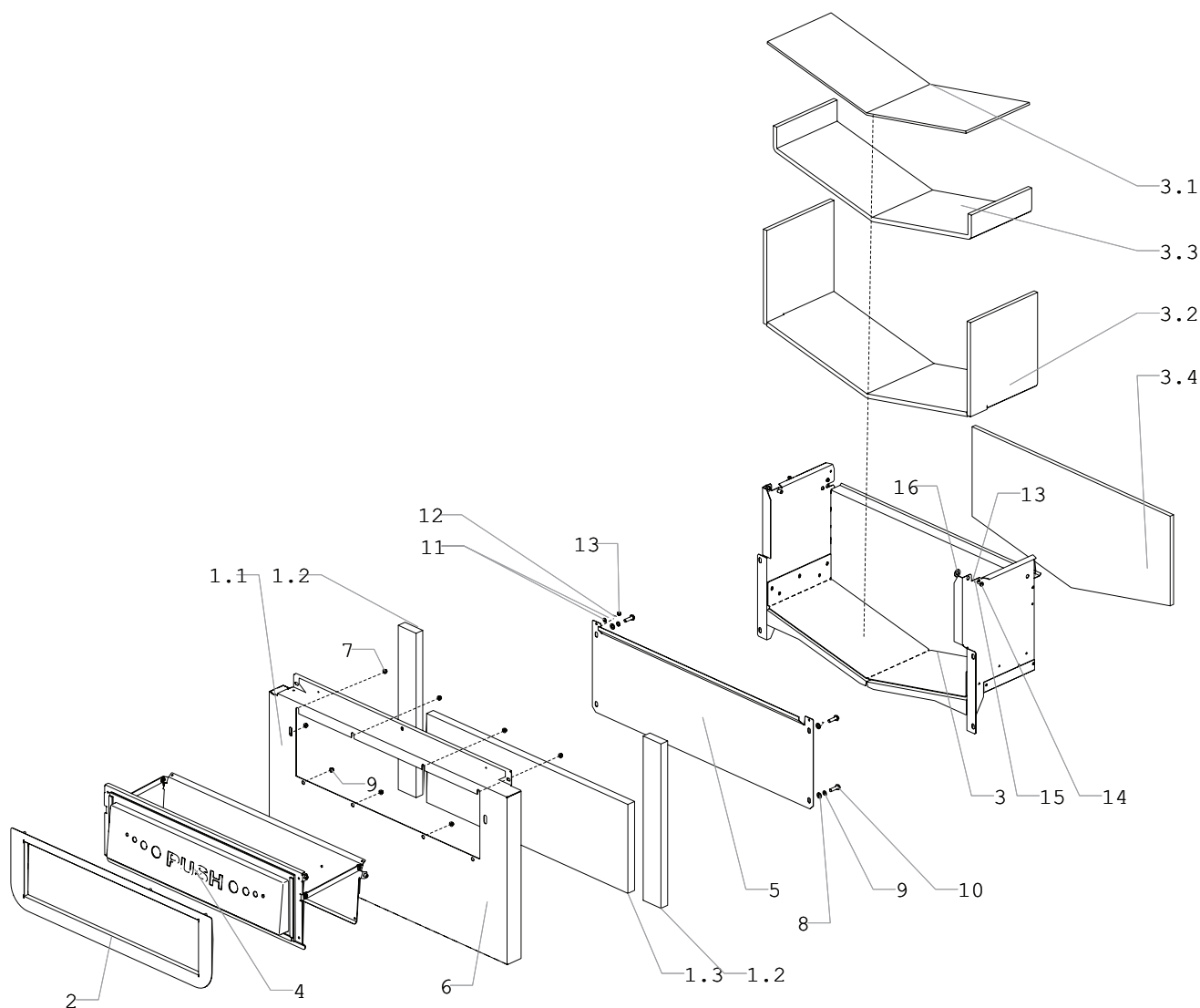
SNACK DISPENSE MODULE

01

Pos.	Part / assembly name	Oder code	Note
1	Cabinet	U0000135404	
2	Product dispensing tray	U0000124854	
3	Cooling unit	---	
4	Cooling unit right cover	U0000123520	
5	Cooling unit left cover	U0000123521	
6	Ventilation cover	U0000123523	
7	Buffer left with a visor assembly Buffer right with a visor assembly	U0000124858 U0000124859	
8	Bracket chipper (LH) Bracket chipper (RH)	U0000123396 U0000123397	
9	Optical sensors assembly (LH) Optical sensors assembly (RH)	U0000124860 U0000124861	
9.1	Plate	U0000129178	
9.2	Board bracket	U0000123286	
9.3	PTFE plate assembly	U0000123421	
9.4	Plate 045_old Plate 063_new_left Plate 063-01_new_right	U0000120649 U0000137490 U0000137491	to 07.12.2016 with 07.12.2016 with 07.12.2016
9.5	Washer_ DIN 6798 A3,2	U0000113549	
9.6	Washer_ DIN 125 A3,2	U0000002117	
9.7	Screw_ DIN 7985 M3x12	U0000001595	
9.8	Washer	U0000118991	
9.9	Washer_ DIN 6797 A3,2	U0000113549	
9.10	Screw_ DIN 7985 M3x10	U0000002282	
10	Support angle	U0000123261	
11	Support top	U0000123262	
12	Housing (LH)	U0000123556	
13	Housing (RH)	U0000123557	
14	Support angle (LH) Support angle (RH)	U0000123544 U0000123545	
15	Door assembly	U0000125081	Vandal-proof
16	Power supply unit	U0000135405	
17	The complete set of fastening to a wall	U0000125032	
18	“Componenti” shelf set	U0000127480	
19	Set the lower guides for shelves	U0000125585	Two pieces (left, right)
20	Set the upper guides for shelves	U0000134107	Two pieces (left, right)

PRODUCT DISPENSING TRAY ASSEMBLY

02





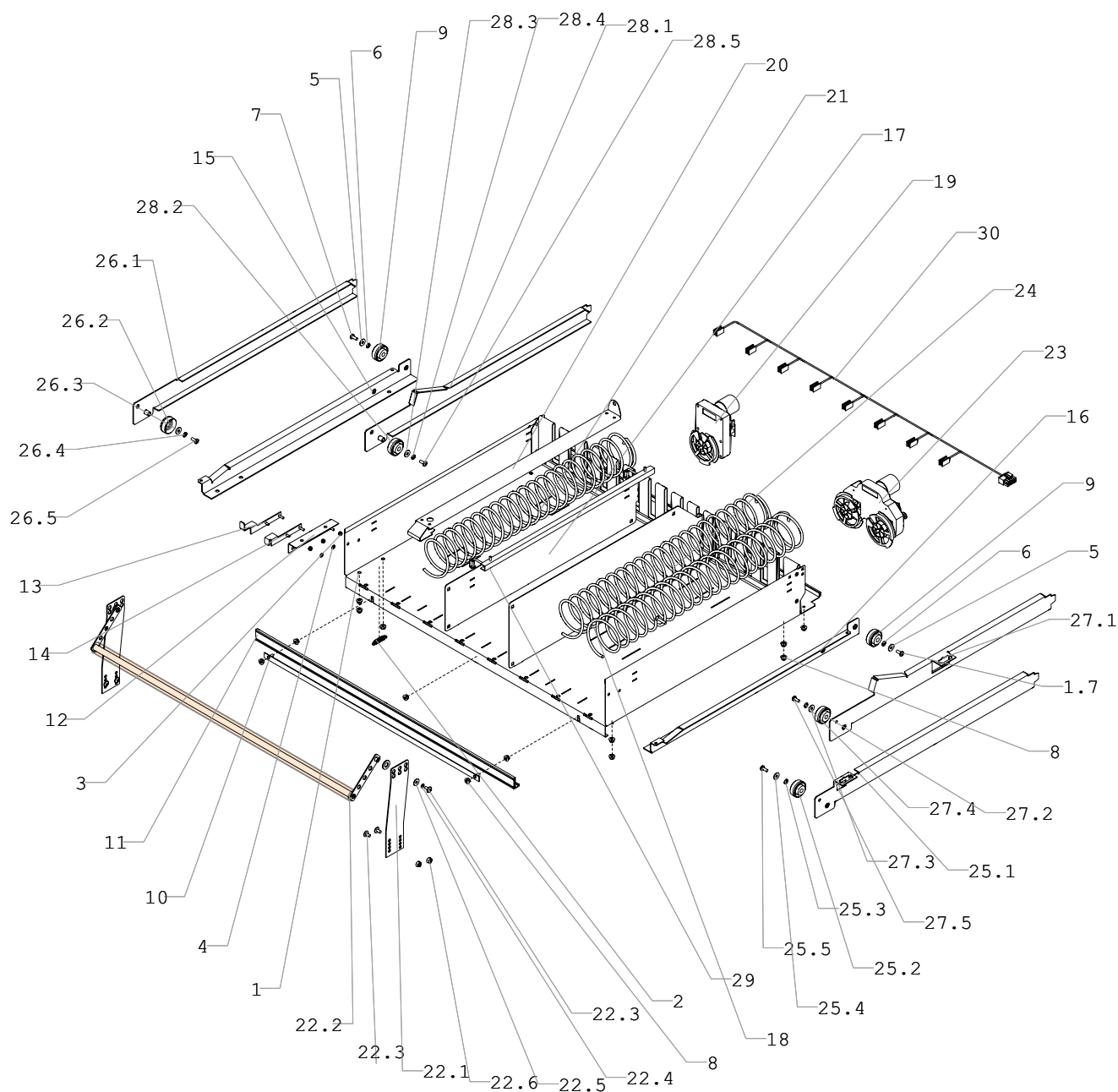
PRODUCT DISPENSING TRAY ASSEMBLY

02

Pos.	Part / assembly name	Order code	Note
1	Front housing assembly	U0000124944	
1.1	Front housing assembly	U0000124946	
1.2	Polystyrene plate	U0000116121	
1.3	Polystyrene plate	U0000116125	
2	Face panel	U0000123352	
3	Dispensing tray assembly	U0000135098	
3.1	Rubber plate	U0000124826	
3.2	External heat-insulating panel	U0000124975	
3.3	Internal heat-insulating panel	U0000124974	
3.4	Back heat-insulating panel	U0000124976	
4	Flap assembly	U0000127093	
5	Cover assembly	U0000123393	
6	Plate	U0000120376	
7	Nut_ DIN 6923 M4	U0000000052	
8	Washer_ DIN 125 A6,4	U0000002307	
9	Washer_ DIN 127 M6	U0000002462	
10	Bolt_ DIN 933 M6x20	U0000011590	
11	Washer_ DIN 125 A4,3	U0000002116	
12	Washer_ DIN 6798 A4,3	U0000001593	
13	Nut_ DIN 934 M4	U0000001939	
14	Screw_ DIN 7985 M4x10	U0000002457	
15	Washer_ DIN 127 M4	U0000001629	
16	Washer_ DIN 125 A7,4	U0000117304	

“COMPONENTI” SHELF SET

03





“COMPONENTI” SHELF SET

03

Pos.	Part / assembly name	Order code	Note
1	Shelf assembly	U0000123252	
2	Spring	U0000117720	
3	Nut_ DIN 985 M3	U0000009262	
4	Washer_ DIN 9021 A3,2	U0000133311	
5	Washer_ DIN 9021 A4,3	U0000000048	
6	Washer_ DIN 127 A4,1	U0000000049	
7	Screw_ DIN 7985 M4x10	U0000002457	
8	Nut_ DIN 6923 M4	U0000002615	
9	Roller	U0000117456	
10	Plate assembly	U0000123423	
11	Price holder	U0000116815	
12	Angle assembly	U0000123288	
13	Fixator assembly	U0000123278	for bottom shelves
14	Fixator assembly	U0000123289	for top shelves
15	Shelf guide assembly (LH)	U0000123295	for all shelves
16	Shelf guide assembly (RH)	U0000123296	for all shelves
17	Separator (93 mm)	U0000123313	
18	Separator (132 mm)	U0000123312 U0000123315	reinforced
19	Single snack motor	U0000120612 U0000118658	FENGHUA SW-VHLHN-001 Componenti MR FP-24DC- 24RPM P/N 276D4024AA
20	Tin guide set	U0000134107	
21	Snack	U0000119884 U0000118605 U0000121891 U0000118309 U0000118606 U0000118294 U0000118310 U0000122023	LH spiral; 84-mm lead; 5 vacancies LH spiral, 76-mm lead, 6 vacancies LH spiral, 57-mm lead, 7 vacancies LH spiral, 45-mm lead, 9 vacancies LH spiral, 37-mm lead, 11 vacancies LH spiral, 32-mm lead, 13 vacancies LH spiral, 26-mm lead, 16 vacancies LH spiral, 21-mm lead, 20 vacancies
22	Bottle limiter set	U0000125068	
22.1	Plate	U0000123491	
22.2	Rod assembly	U0000124942	
22.3	Screw_ DIN 967 M4x8	U0000119287	
22.4	Washer_ DIN 127 M4	U0000001629	



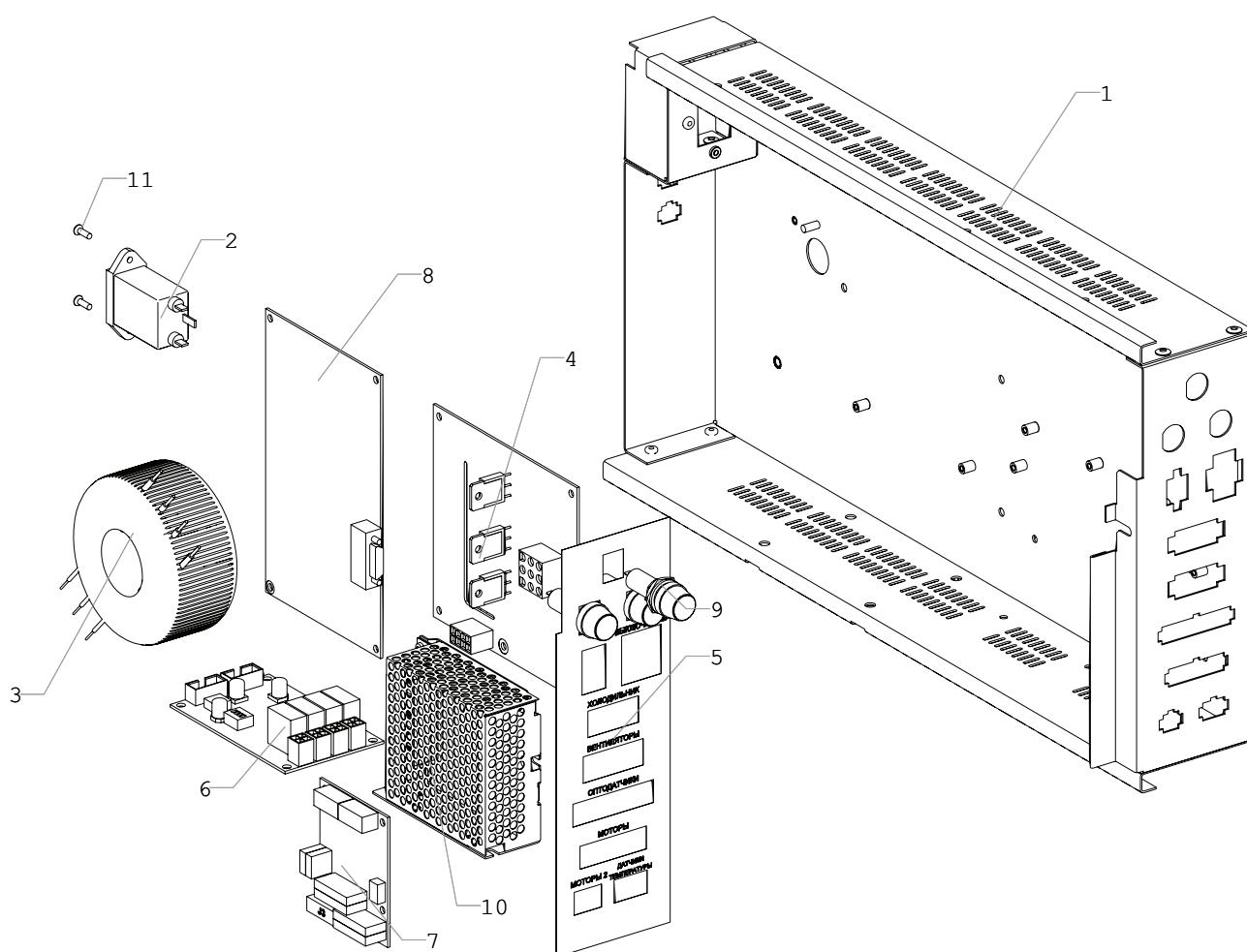
“COMPONENTI” SHELF SET

03

Pos.	Part / assembly name	Order code	Note
22.5	Washer	U0000000048	DIN 9021 A4,3
22.6	Nut	U0000002615	DIN 6923 M4
23	Double snack motor	U0000118659	Componenti MR FPD-24DC-24RPM P/N 276D4024BA
24	Snack set	U0000119738 U0000119737 U0000119736 U0000119735 U0000119734	76-mm lead, 6 vacancies 4-mm lead, 9 vacancies 37-mm lead, 11 vacancies 32-mm lead, 13 vacancies 22-mm lead, 16 vacancies
25	Guide assembly (RH)	U0000124931	5-th & 6-th shelves
25.1	Guide assembly	U0000123448	
25.2	Roller	U0000117456	
25.3	Washer_ DIN 6798 A4,3	U0000001593	
25.4	Washer_ DIN 9021 A4,3	U0000000048	
25.5	Screw_ DIN 7985 M4x10	U0000002457	
26	Guide assembly (LH)	U0000124932	5-th & 6-th shelves
26.1	Guide assembly	U0000123449	
26.2	Roller	U0000117456	
26.3	Washer_ DIN 6798 A4,3	U0000001593	
26.4	Washer_ DIN 9021 A4,3	U0000000048	
26.5	Screw_ DIN 7985 M4x10	U0000002457	
27	Guide assembly (RH)	U0000124933	1 — 4-th shelves, tilted
27.1	Guide assembly	U0000123450	
27.2	Roller	U0000117456	
27.3	Washer_ DIN 9021 A4,3	U0000001593	
27.4	Washer_ DIN 6798 A4,3	U0000000048	
27.5	Screw_ DIN 7985 M4x10	U0000002457	
28	Guide assembly (LH)	U0000124934	1 — 4-th shelves, tilted
28.1	Guide assembly	U0000123451	
28.2	Roller	U0000117456	
28.3	Washer_ DIN 9021 A4,3	U0000001593	
28.4	Washer_ DIN 6798 A4,3	U0000000048	
28.5	Screw_ DIN 7985 M4x10	U0000002457	
29	Width limiter set	U0000124644	
30	Snack motors harness	U0000123170	

POWER SUPPLY UNIT

04





POWER SUPPLY UNIT

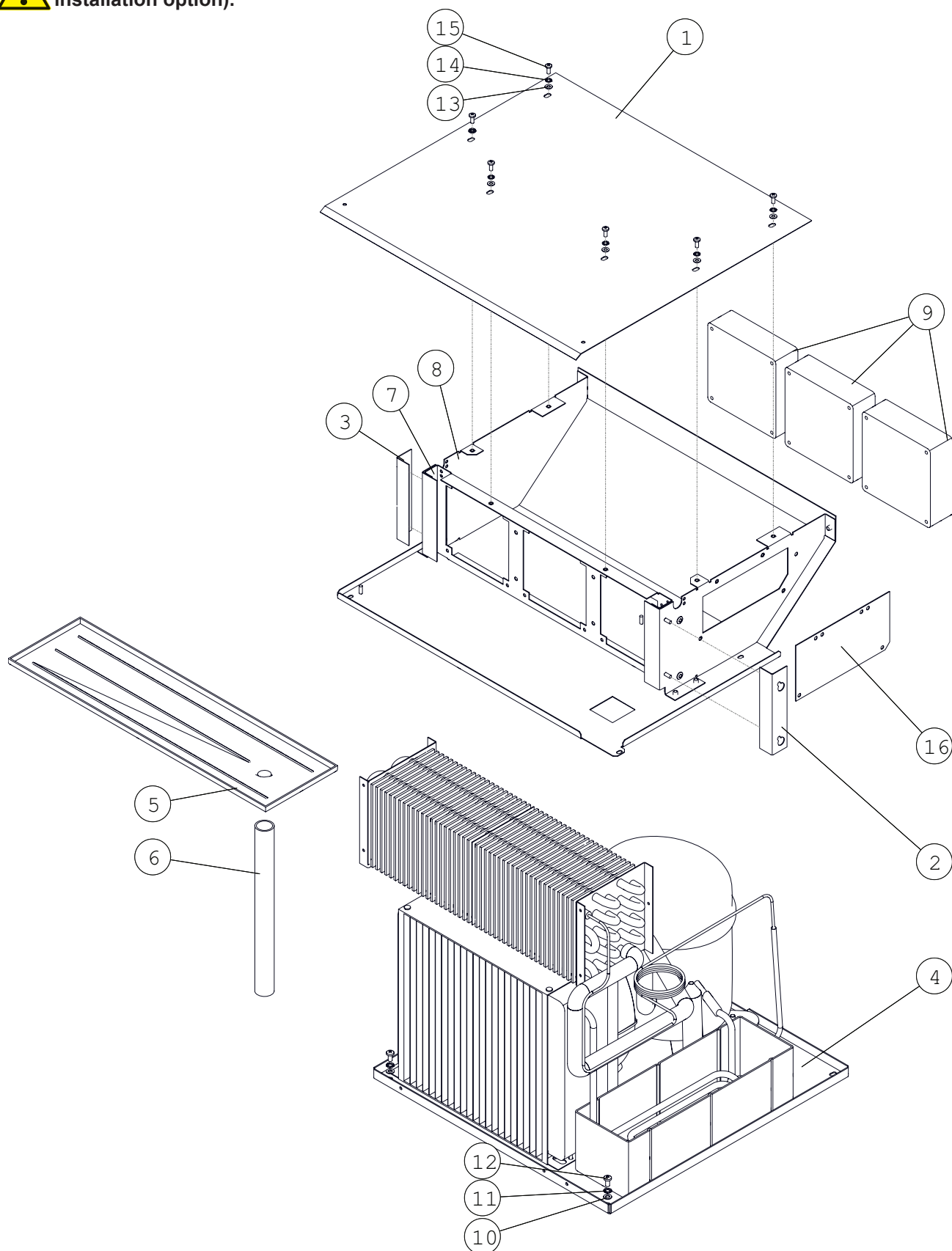
04

Pos.	Part / assembly name	Order code	Note
1	Bracket assembly	U0000135406	
2	Supply-line filter	U0000119291	
3	Transformer	U0000124144	
4	Board 024	U0000120344	
5	Label	U0000135402	
6	Board 052	U0000124146	
7	Board 021	U0000120195	
8	Board 023	U0000120194	
9	Fuse holder	U0000121536	
10	Power supply unit	U0000120708	
11	Screw_ DIN 965 M3x10	U0000002285	

COOLING UNIT

05-A


NEW!!! The unit is used in vending machines since 05.10.2017 of the issue (with three fans and duct installation option).





COOLING UNIT

05-A

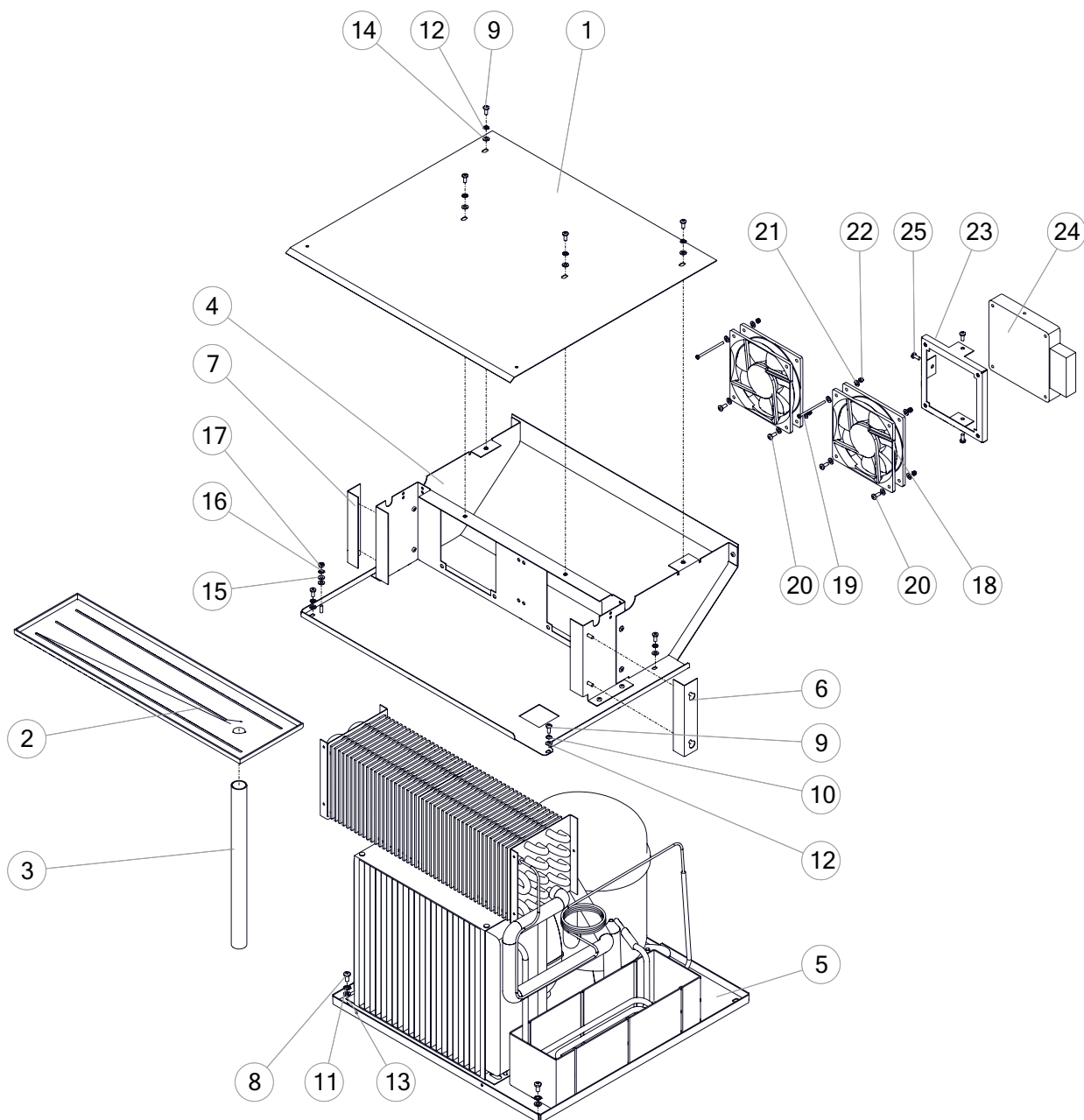
Pos.	Part / assembly name	Order code	Note
1	Cover	U0000140877	
2	Support angle	U0000123493	
3	Support angle	U0000123494	
4	Cooling unit_Riva cold 8007	U0000116633	
5	Evaporator tray	U0000117428	Evaporator tray assembly U0000124913
6	Tube	U0000124836	
7	Bracket assembly	U0000140878	
8	Bracket for fans	U0000140574	
9	Fan	U0000115713	
10	Washer_ DIN 125 A5,3	U0000002306	
11	Washer_ DIN 127 A5,1	U0000002461	
12	Screw_ DIN 7985 M5,0x12	U0000115405	
13	Washer_ DIN 125 A4,3	U0000002116	
14	Washer_ DIN 127 A4,1	U0000001629	
15	Screw_ DIN 7985 M4,0x12	U0000002458	
16	Stub	U0000141018	

COOLING UNIT

05-B



OLD!!! The unit was used in vending machines until 05.10.2017 of the issue.





COOLING UNIT

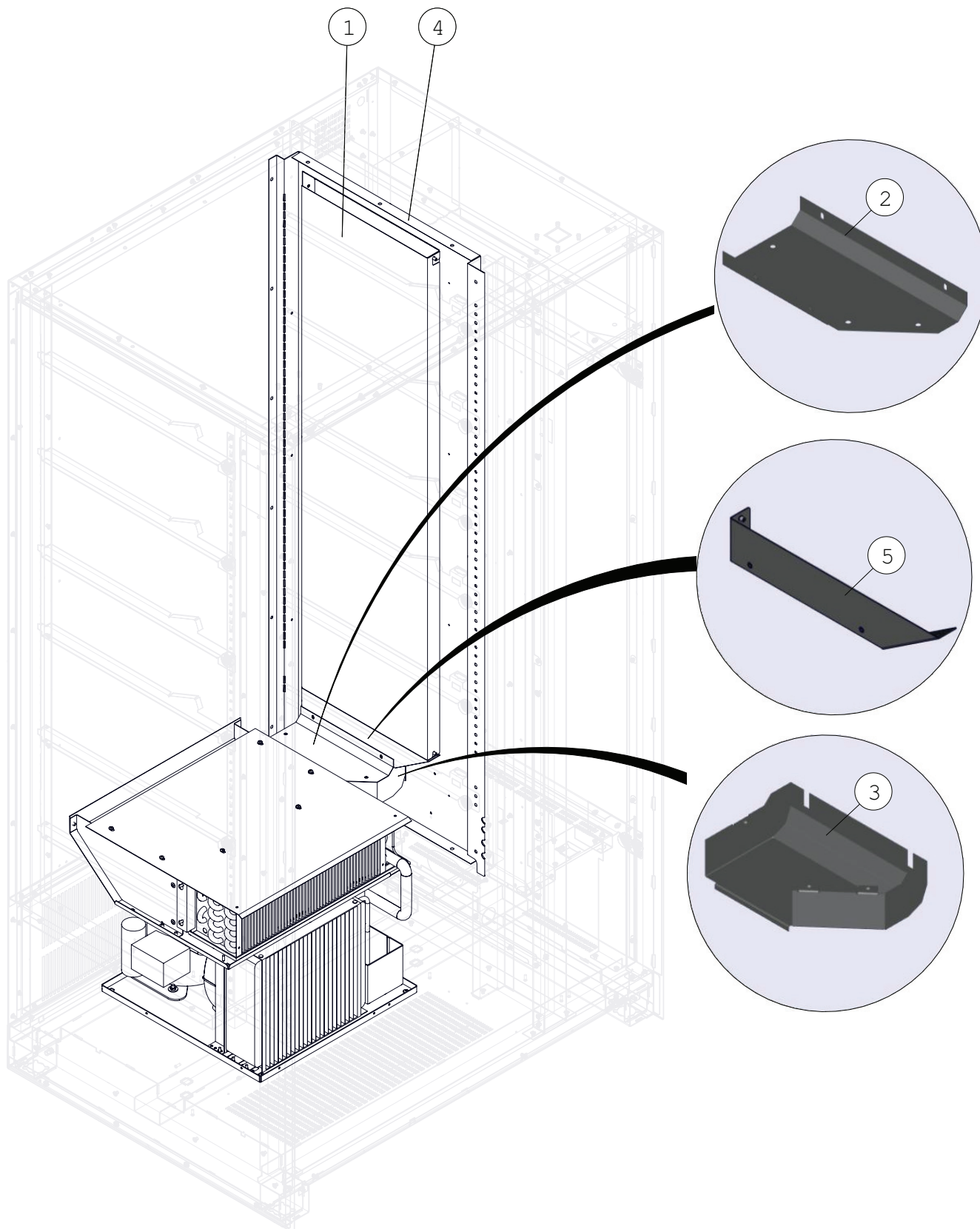
05-B

Pos.	Part / assembly name	Order code	Note
1	Cover	U0000123518	
2	Evaporator tray	U0000117428	Evaporator tray assembly U0000124913
3	Tube	U0000124836	
4	Fan unit	U0000133284	
5	Cooling unit_Riva cold	U0000116633	
6	Support angle	U0000123493	
7	Support angle	U0000123494	
8	Screw_ DIN 7985 M5,0x12	U0000115405	
9	Screw_ DIN 7985 M4,0x12	U0000002458	
10	Washer_ DIN 9021 A4,3	U0000003804	
11	Washer_ DIN 127 A5,1	U0000002461	
12	Washer_ DIN 127 A4,1	U0000001629	
13	Washer_ DIN 125 A5,3	U0000002306	
14	Washer_ DIN 125 A4,3	U0000002116	
15	Washer_ DIN 6798 A4,3	U0000001593	
16	Washer_ DIN 125 A4,3	U0000002116	
17	Nut_ DIN 934 M4	U0000001939	
18	Fan	U0000115713	
19	Screw_ DIN 7985 M3,0x50	U0000001594	
20	Screw_ DIN 7985 M3,0x12	U0000001595	
21	Шайба_ DIN 9021 A3,2	U0000003694	
22	Гайка_ DIN 985 M3	U0000009262	
23	Bracket	U0000116864	option_for Foodbox Street option_for Foodbox Street
24	Heater	U0000121980	
25	Screw_ DIN 7981 M3,9x9,5-F		

COOLING SYSTEM WITH SIDE AIR DUCT 06



OPTION!!! The system is used in vending machines since 27.06.2017 of the issue.
The system is only used with a cooling unit Riva cold 8007.





COOLING SYSTEM WITH SIDE AIR DUCT 06

Pos.	Part / assembly name	Order code	Note
1	Duct casing	U0000140597	
2	Branch pipe cover	U0000140879	
3	Branch pipe	U0000140880	
4	Rear wall of the duct	U0000140599	
5	Duct casing	U0000140600	