



# ***NERO***

## ***SPARE PARTS CATALOGUE***



Version 3.0 / December 2015



## Changes

Version	Date	Brief description	Стр.
3.0	12.2015	Creation of the actual version of the document	All



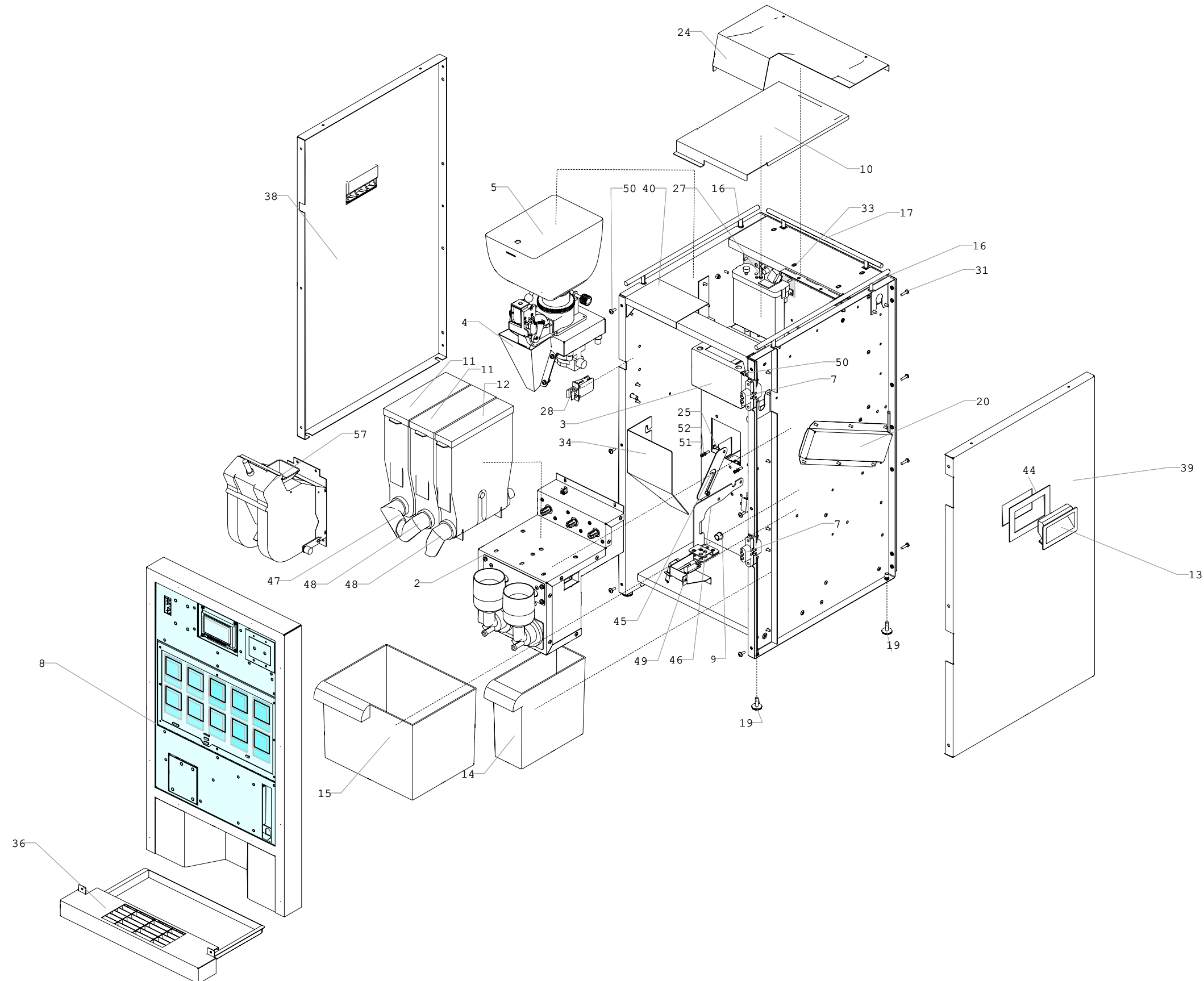
Catalogue is created for hot beverage vending machine NERO, manufactured till 5 December 2015.

The machine's main units are listed in the table below.

Section nbr.	Order code	Name	Pg.
1		Hot beverage vending machine NERO (Table Top)	4
2	U0000131721	Door assembly	8
3	U0000131736	Central device assembly	10
4	U0000122263	Espresso group	12
5	U0000124477	Espresso group reducer	14
6	U0000127714	Grinder assembly	16
7	U0000119018	Grinder	18
8	U0000119017	Dosing unit	20
9	U0000124137	Graphic display assembly	22
10	U0000126231	Switching unit	24
11	U0000131547	Waste sensor	26
12	U0000131716	Mixer group assembly	28
13	U0000131718	Water supply valve bracket assembly	30
14	U0000131720	Outer water supply components	32
15	U0000131566	Water drainage control assembly	34
16	U0000131567	Float chamber assembly	36
17	U0000131545	Boiler group	38
18	U0000131531	Boiler assembly	40
19	U0000125025	Boiler pump assembly	42
20	U0000121898	Mixer assembly	44

Hot beverage vending machine NERO (front view)

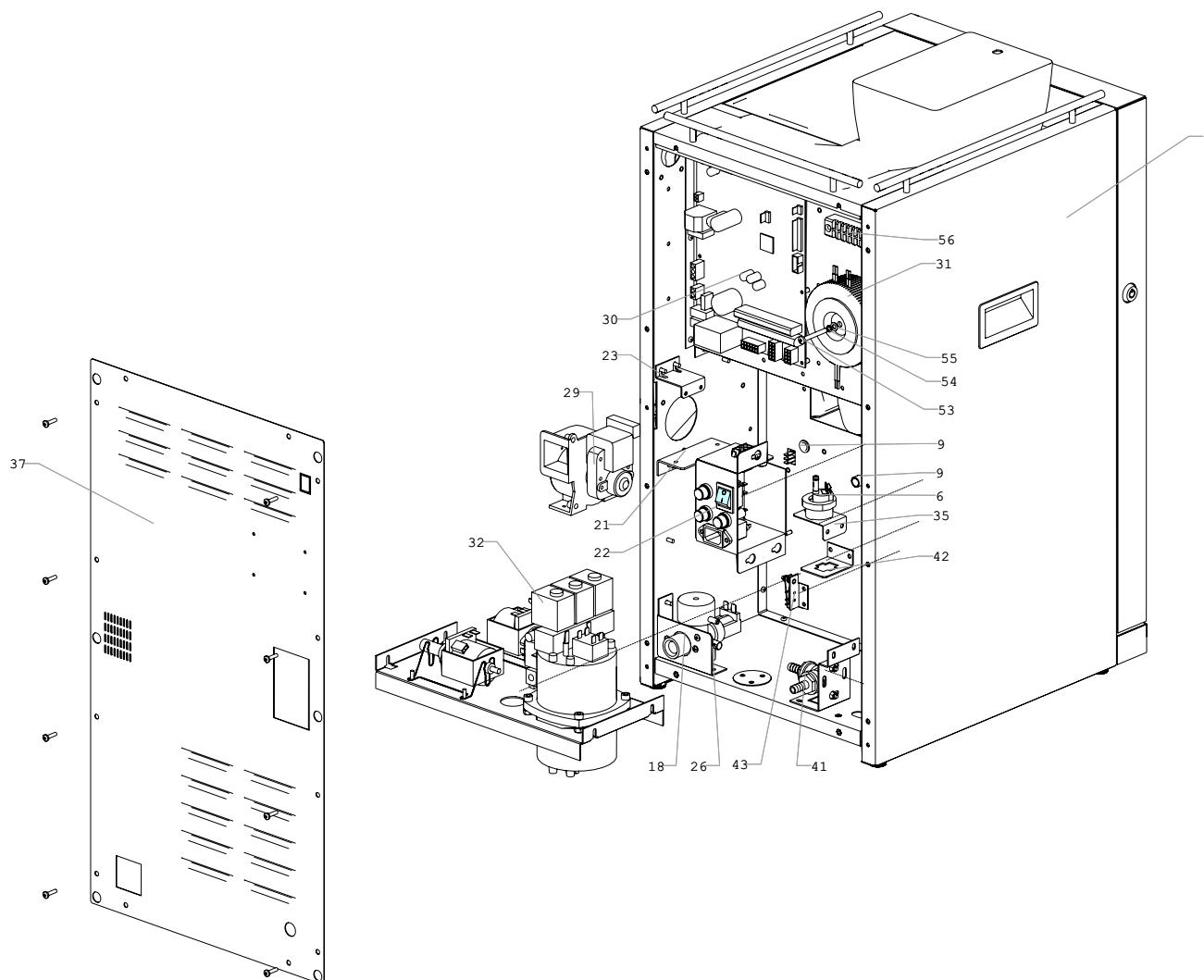
01





# Hot beverage vending machine NERO (back view)

01





# Hot beverage vending machine NERO

01

Pos.	Part / assembly name	Order code	Note
1	Body assembly	U0000124666	
2	Mixer group assembly	U0000131716	Ref. to section 12
3	Support bracket assembly	U0000131717	
4	Grinder assembly	U0000127714	Ref. to section 6
5	Coffee container	U0000121897	
6	Water counter	U0000119207	
7	Door hinge	U0000122190	
8	Door assembly	U0000131721	Ref. to section 2
9	Bushing	U0000119160	
10	Cover assembly	U0000123642	
11	Granular ingredients container	U0000122262	
12	Granular ingredients container	U0000121895	
13	Hidden handle	U0000118958	
14	Waste container	U0000121968	
15	Waste container	U0000121969	
16	Top railing	U0000122194	
17	Top railing	U0000122193	
18	Outer water supply components	U0000119205	Ref. to section 14
19	Support leg	U0000000046	
20	Air-duct	U0000124127	
21	Fan bracket	U0000123691	
22	Switching unit	U0000126231	Ref. to section 10
23	Bracket	U0000123701	
24	Top panel assembly	U0000123643	
25	Screw	U0000009568	DIN 923 M4x10
26	Screw	U0000002757	DIN 7985 M4x16
27	Float chamber assembly	U0000131567	Ref. to section 16
28	Door microswitch	U0000119218	
29	Fan	U0000122230	
30	Board 026	U0000122180	
31	Transformer	U0000122704	
32	Boiler group	U0000131545	Ref. to section 17
33	Channel bar assembly	U0000131614	
34	Housing	U0000123690	
35	Bracket	U0000123685	



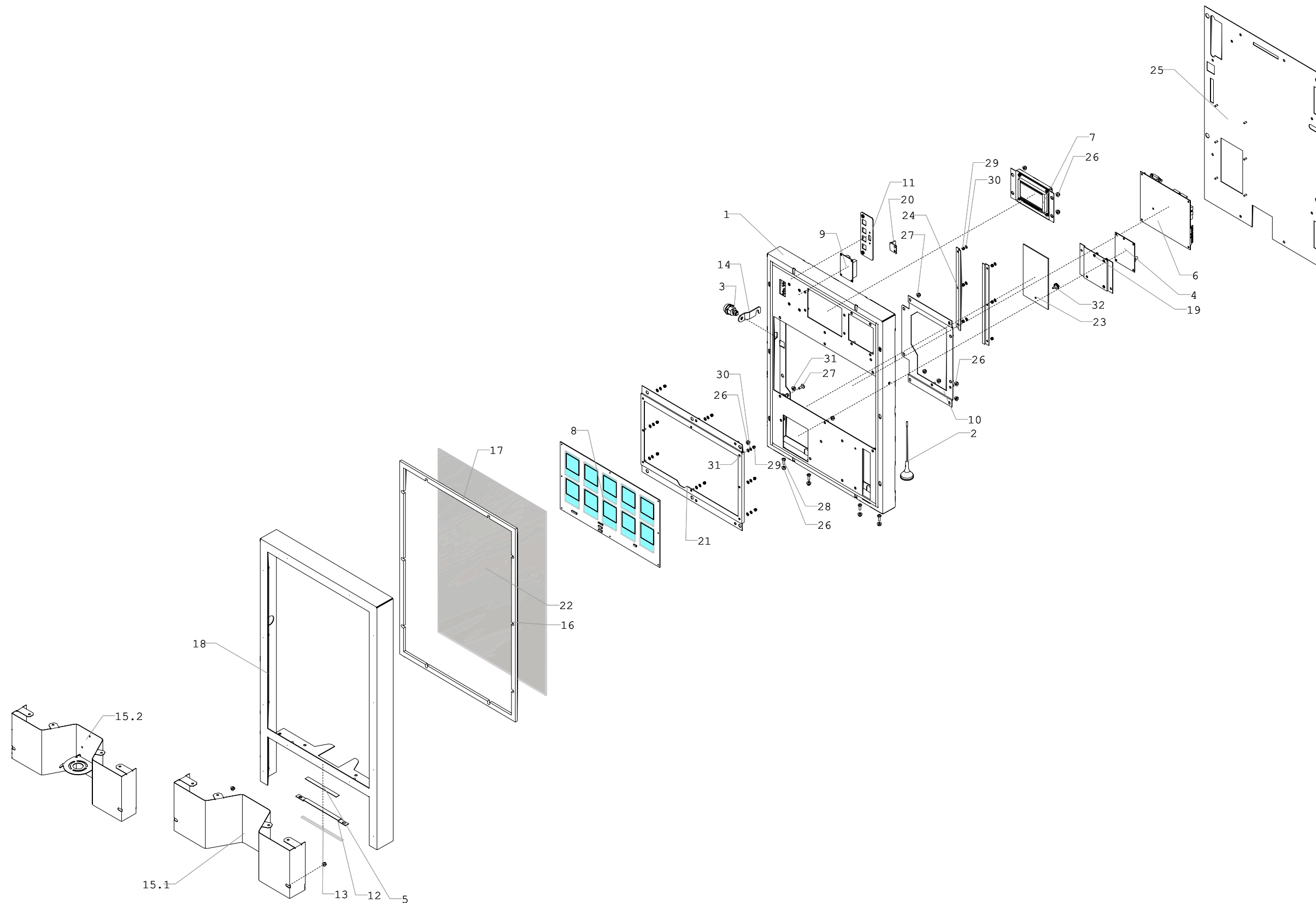
## Hot beverage vending machine NERO

01

Pos.	Part / assembly name	Order code	Note
36	Tray assembly	U0000129514	
37	Back wall	U0000123680	
38	Left panel	U0000123709	
39	Right panel	U0000123710	
40	Top panel assembly	U0000123645	
41	Inlet fitting bracket assembly	U0000131718	
42	Bracket	U0000130649	
43	Waste sensor	U0000131547	Ref. to section 11
44	Frame	U0000123703	
45	Limiter	U0000123676	
46	Tube holder assembly	U0000131666	
47	Left connecting pipe	U0000121894	
48	Right connecting pipe	U0000121894	
49	Water drainage control assembly	U0000131566	Ref. to section 15
50	Screw	U0000010090	DIN 967 M4x12
51	Nut	U0000009262	DIN 368 M3
52	Washer	U0000002117	DIN 125 A3,2
53	Screw	U0000122414	DIN 7985 M5x40
54	Washer	U0000002461	DIN 127 M5
55	Washer	U0000002306	DIN 125 A5,3
56	Terminal block	U0000119144	
57	Espresso group	U0000122263	Ref. to section 4

NERO / NERO INSTANT: U0000131721  
Door assembly

02





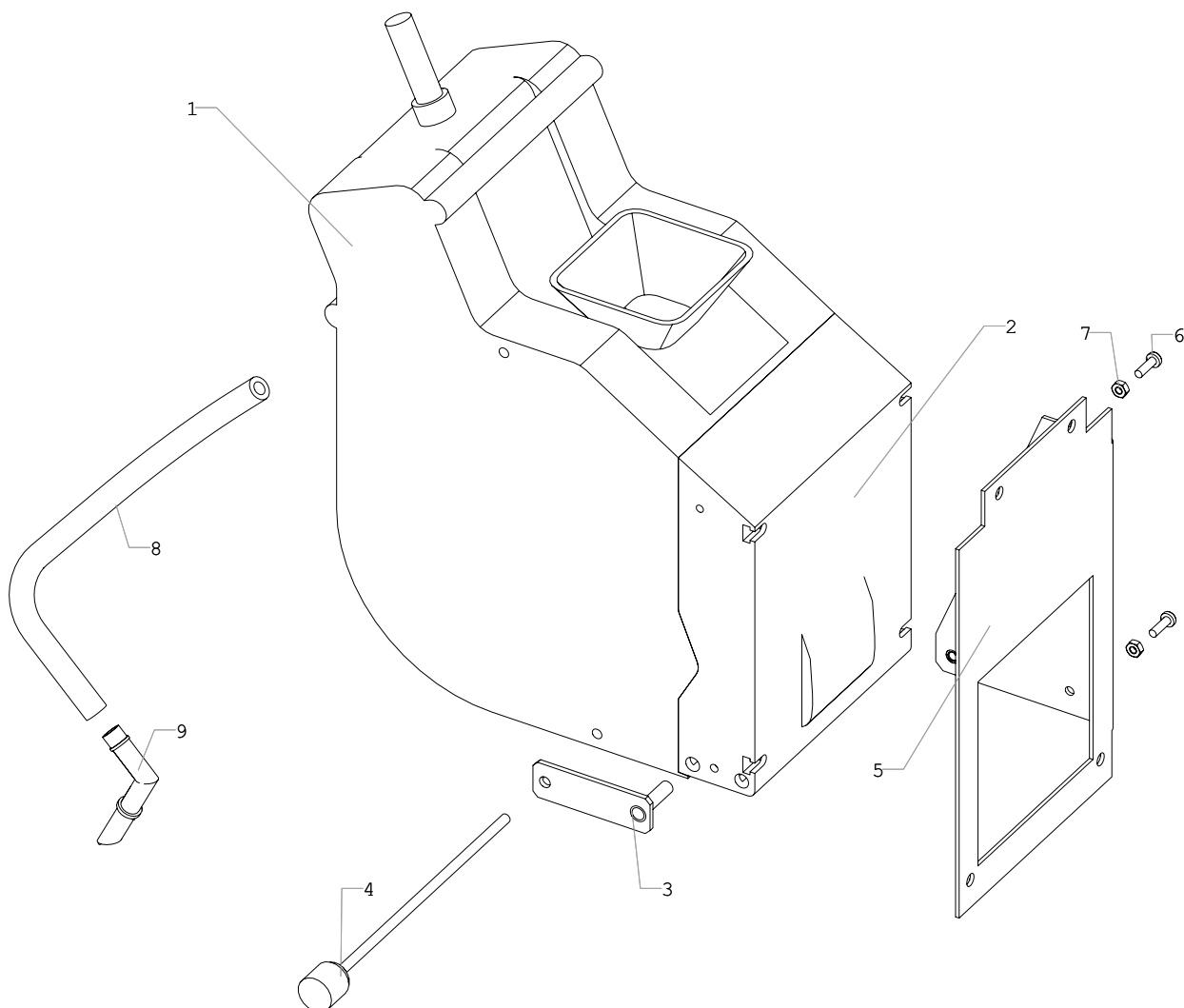

**NERO / NERO INSTANT: U0000131721**  
**Door assembly**
**02**

Pos.	Part / assembly name	Order code	Note
1	Door frame assembly	U0000123646	
2	Modem antenna	U0000119991	Option
3	Lock	U0000126734	Mizmatic ML-22 C2
4	Modem	U0000119992	Option
5	Two-colored LED strip	U0000122362	
6	Board 019-02	U0000131730	
7	Graphic display assembly	U0000124137	Ref. to section 9
8	Touch pad board assembly	U0000133139	
9	Indicator extension board	U0000122710	Board 051
10	Control board plate	U0000130614	
11	Buttons plate	U0000130612	
12	Illumination bracket	U0000123712	
13	Glass	U0000122191	
14	Latch	U0000123678	
15.1	Trim panel (without cup support)	U0000123704	on machines till 04.12.2015
15.2	Trim panel (with cup support)	U0000132856	on machines since 04.12.2015
16	Frame plate (long)	U0000124627	
17	Frame plate (short)	U0000124628	
18	Frame assembly	U0000130624	
19	Modem bracket	U0000130626	
20	Switch bracket	U0000123682	
21	Touch pad board bracket	U0000123660	
22	Glass (with silk-printing image)	U0000122570	
23	Plate	U0000122192	
24	Guide	U0000123697	
25	Door panel	U0000123657	
26	Nut	U0000000052	DIN 6923 M4
27	Screw	U0000113212	DIN 967 M4x10
28	Screw	U0000002458	DIN 7985 M4x12
29	Nut	U0000009262	DIN 985 M3
30	Washer	U0000002117	DIN 125 A3,2
31	Washer	U0000118991	
32	Screw	U0000120090	DIN 464 M3,0x5



**NERO: U0000131736**  
**Central device assembly**

**03**

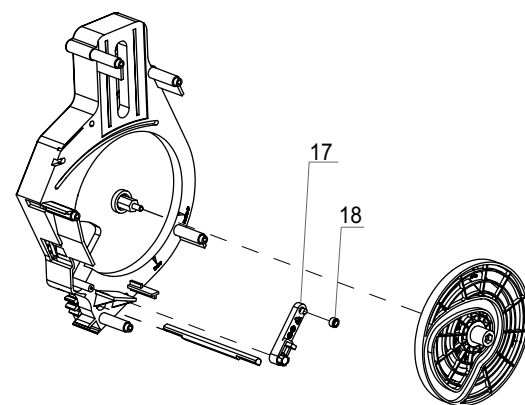
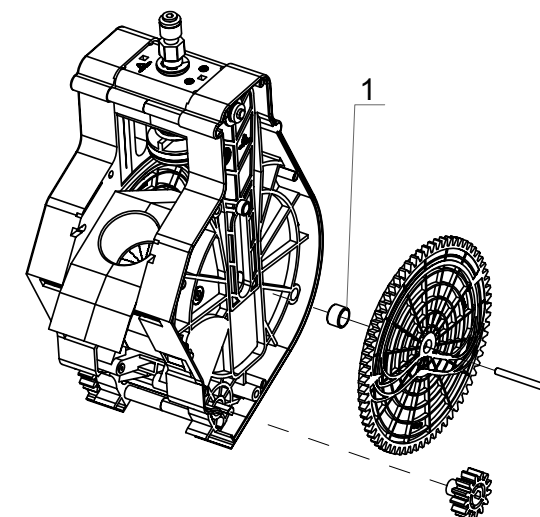
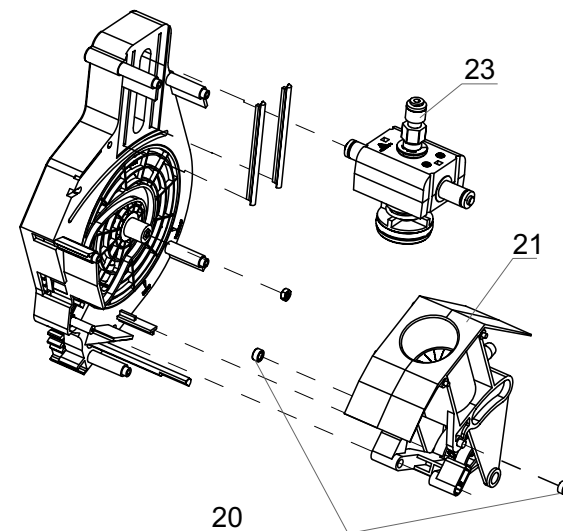
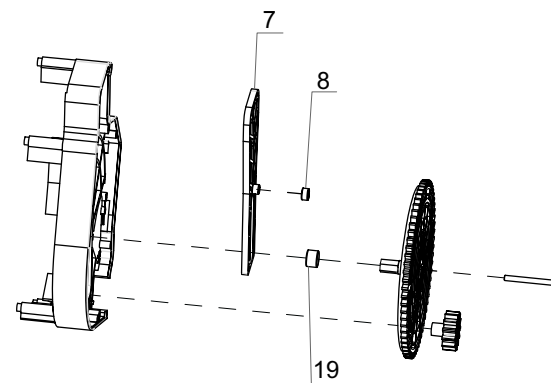
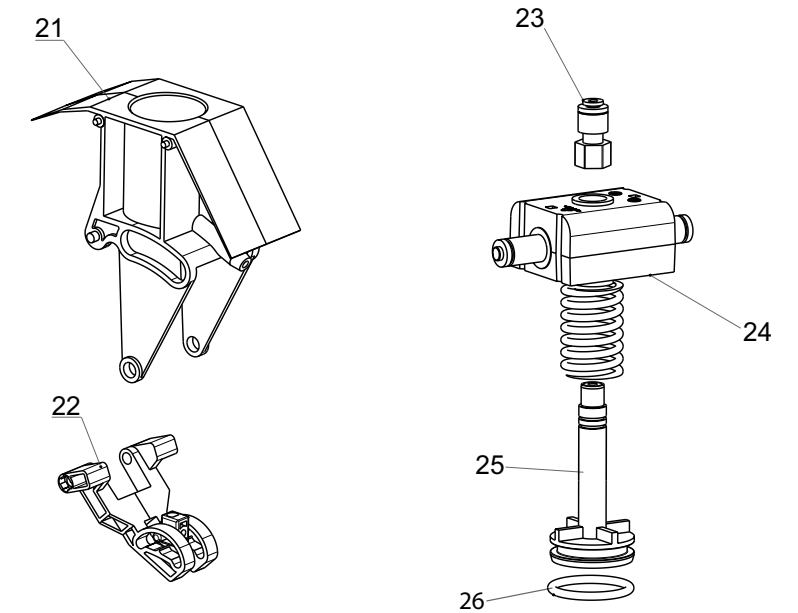
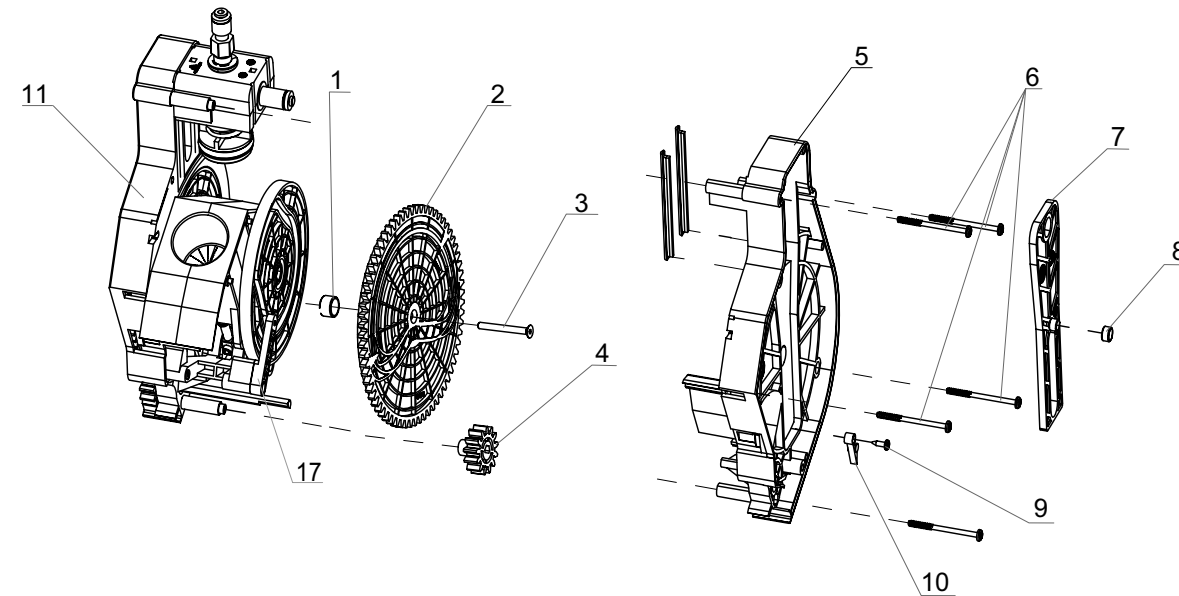
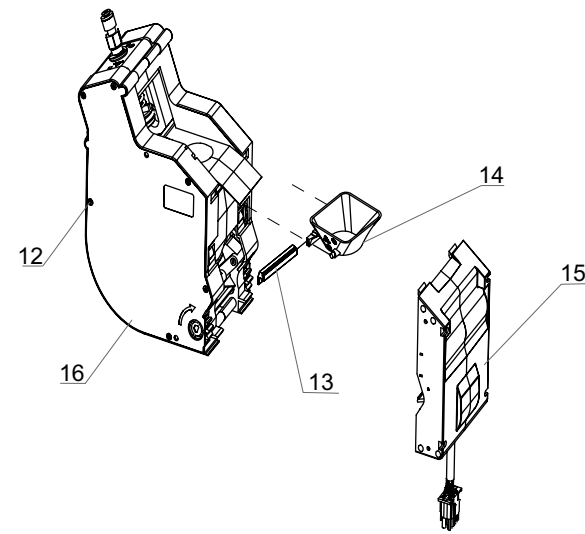



**NERO: U0000131736**  
**Central device assembly**
**03**

Pos.	Part / assembly name	Order code	Note
1	Espresso group	U0000122263	Ref. to section 4
2	Espresso group reducer	U0000124477	Ref. to section 5
3	Stop plate	U0000123673	
4	Mounting axle	U0000134091	
5	Espresso group bracket	U0000123651	
6	Screw	U0000002282	DIN 7985 M3x10
7	Nut	U0000001592	DIN 934 M3
8	Tube	U0000131739	
9	Nozzle	U0000119191	

NERO: U0000122263  
Espresso group

04



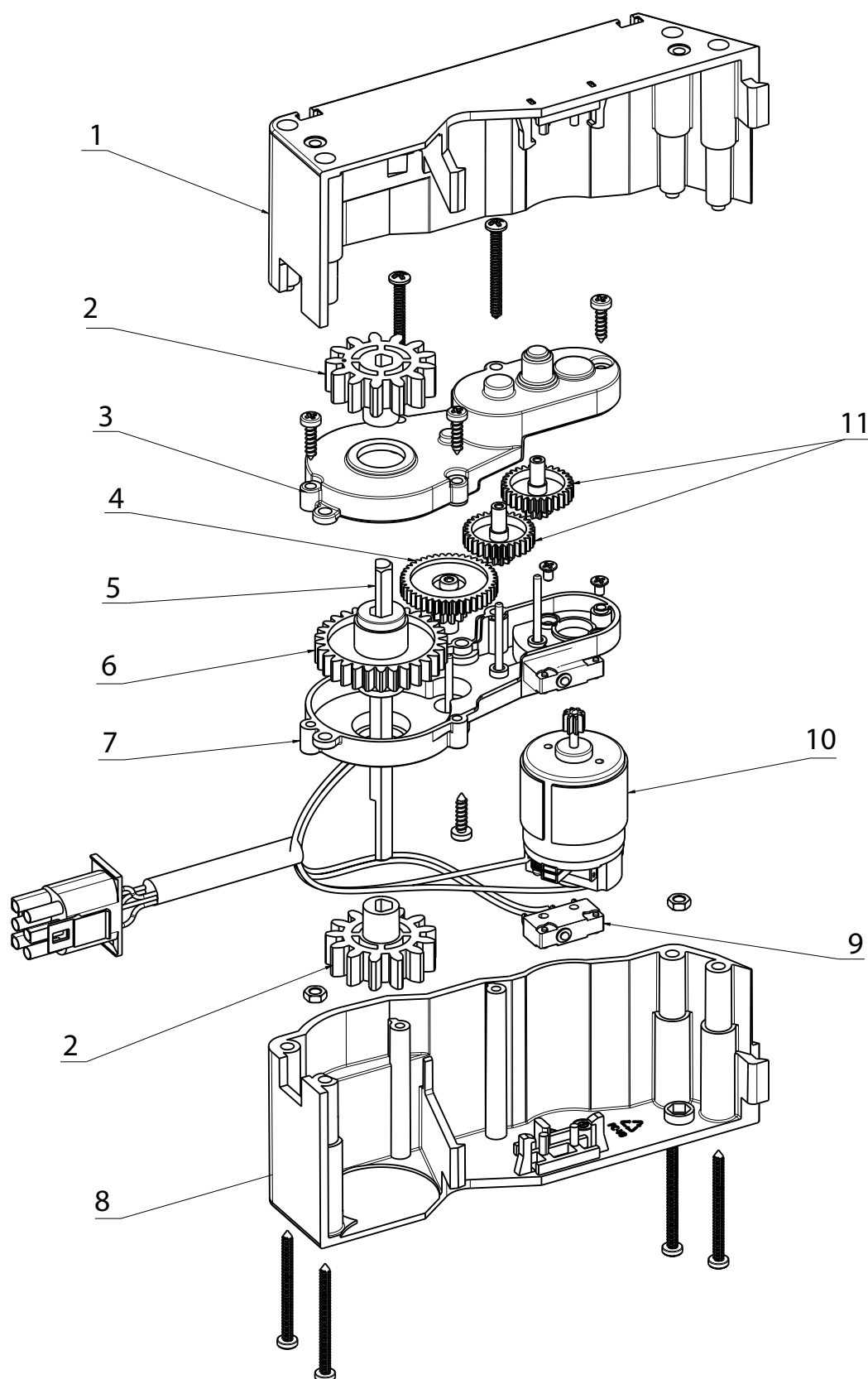

**NERO: U0000122263**  
**Espresso group**
**04**

Pos.	Part / assembly name	Order code	Note
1	Gear bushing	U0000122087	
2	Gear (left)	U0000126900	U0000126899 - right
3	Screw	U0000134048	
4	Coupling gear	U0000125293	
5	Right housing	U0000134049	
6	Screw	U0000134050	
7	Lever	U0000119666	
8	Lever bushing	U0000122086	
9	Screw	U0000134051	
10	Clamp (right)	U0000125108	U0000125109 - left
11	Left housing	U0000134052	
12	Screw	U0000134053	
13	Rubber	U0000122267	
14	Chute	U0000125141	
15	Espresso group reducer	U0000124477	Ref. to section 5
16	Housing cover (right)	U0000131868	U0000131869 - left
17	Lower piston lever	U0000121167	
18	Lower piston bushing	U0000121170	
19	Gear bushing	U0000122087	
20	Chamber bushing	U0000121171	
21	Chamber	U0000122112	
22	Lower piston connecting-rod	U0000121159	
23	Tube collet holder	U0000121169	
24	Percussion cap of top piston	U0000121624	
25	Top piston	U0000122264	
26	Top piston gasket	U0000121534	



**NERO: U0000124477**  
**Espresso group reducer**

**05**



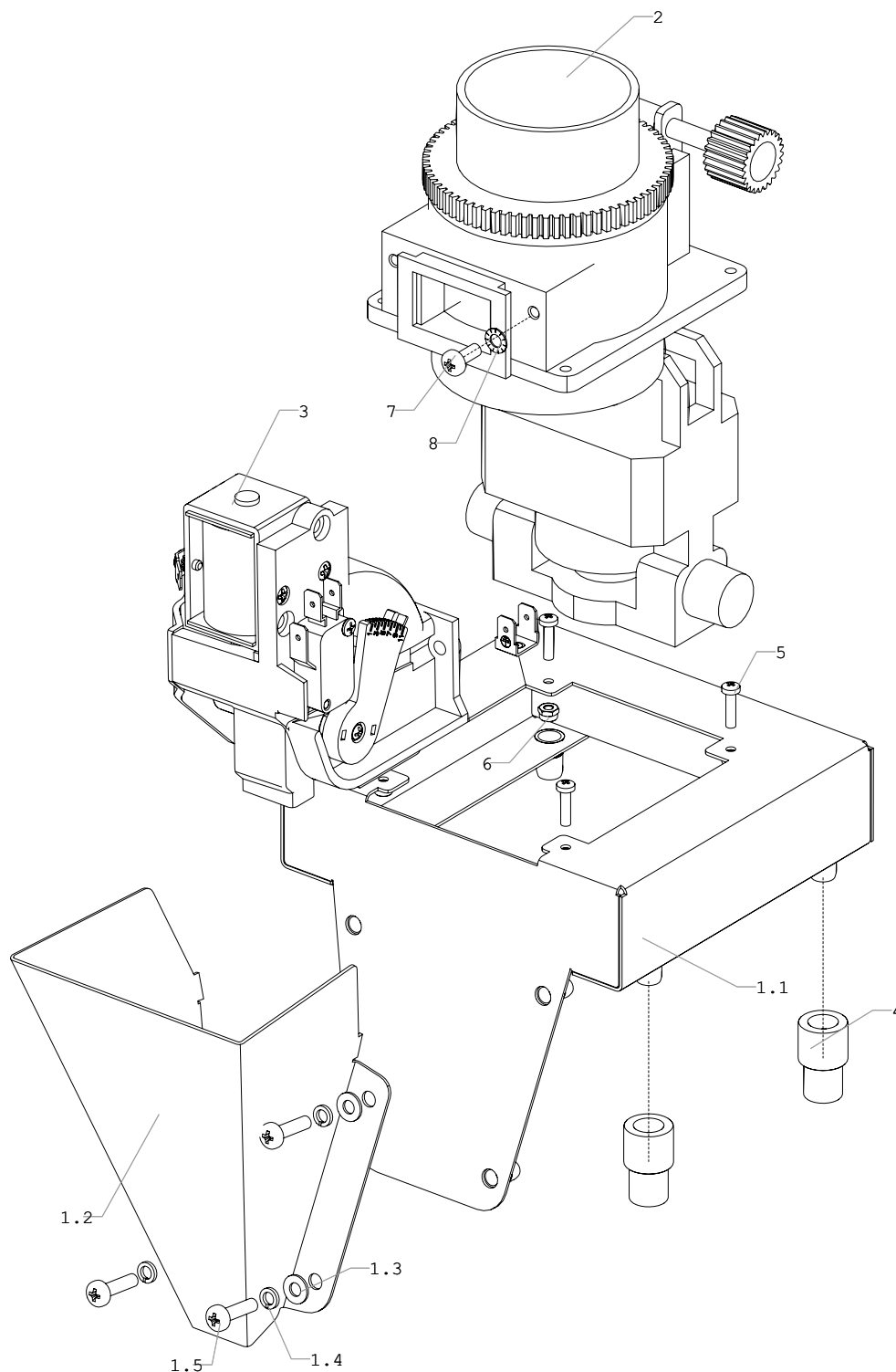

**NERO: U0000124477**  
**Espresso group reducer**
**05**

Pos.	Part / assembly name	Order code	Note
1	Right body section	U0000128597	
2	Coupling gear	U0000125293	
3	Left housing section	U0000134054	
4	Gear (white)	U0000121539	
5	Rod	U0000134055	
6	Gear (big)	U0000124570	
7	Left housing section	U0000134057	
8	Right body section	U0000128596	
9	Microswitch	U0000124473	
10	Geared motor	U0000124476	
11	Gear (green)	U0000134058	



**NERO: U0000127714**  
**Grinder assembly**

**06**





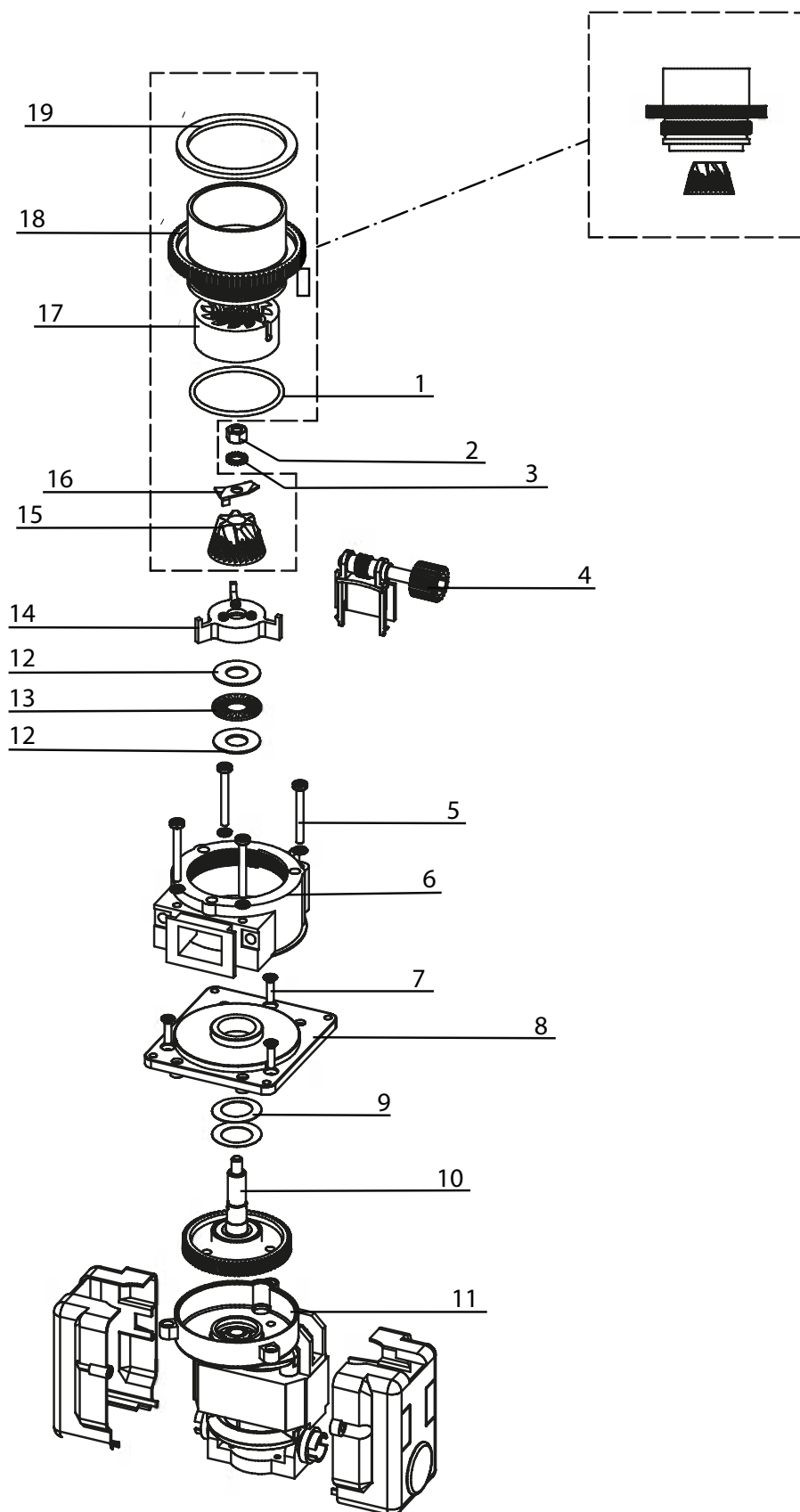

**NERO: U0000127714**  
**Grinder assembly**
**06**

Pos.	Part / assembly name	Order code	Note
1	Case with chute assembly	U0000130105	
1.1	Case assembly	U0000130104	
1.2	Chute	U0000130102	
1.3	Washer	U0000002116	DIN 125 A4,3
1.4	Washer	U0000001629	DIN 127 M4
1.5	Screw	U0000118942	DIN 7985 M4,0x14
2	Grinder	U0000119018	Ref. to section 7
3	Dosing unit	U0000119017	Ref. to section 8
4	Support leg	U0000119138	
5	Screw	U0000120149	DIN 7985 M3x12
6	Nut	U0000119587	DIN 985 M3
7	Screw	U0000002457	DIN 7985 M4x10
8	Washer	U0000001593	DIN 6798 A4,3



**NERO: U0000119018**  
**Grinder**

**07**



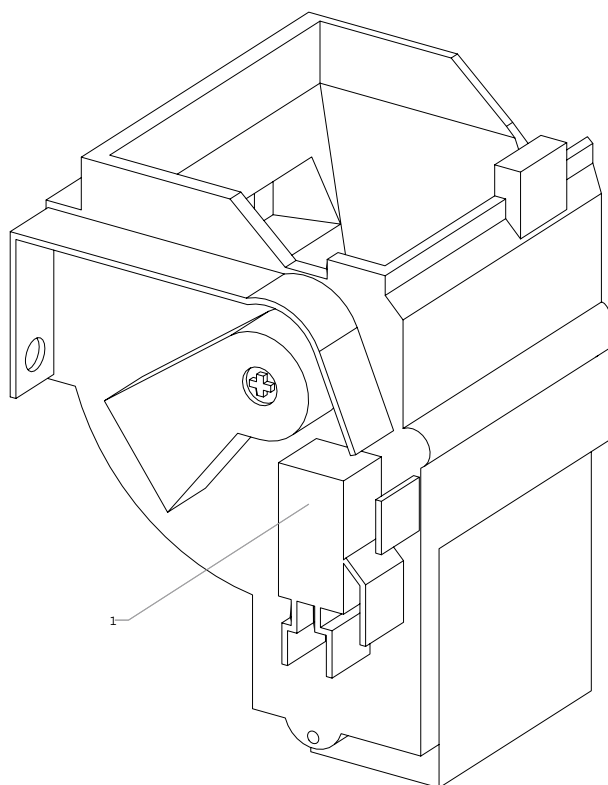

**NERO: U0000119018**  
**Grinder**
**07**

Pos.	Part / assembly name	Order code	Note
1	Ring	U0000134072	
2	Nut M6 LH steel	U0000134073	
3	Washer M6 steel	U0000134074	
4	Adjusting screw	U0000121531	
5	Screw M4x35	U0000134075	
6	Grinder housing		together with grinder
7	Screw M4x16	U0000134077	
8	Support plate	U0000134078	
9	Spring washer	U0000134079	
10	Gear with bearing assembly	U0000121528	
11	Grinder motor	U0000124474	~100 V; 50-60 Hz ~117 V; 60 Hz ~230 V; 50 Hz
12	Washer	U0000134080	
13	Needle-bearing	U0000134081	
14	Impeller	U0000128598	
15	Milling cutter		together with grinder
16	Blade	U0000134082	
17	Mill		together with grinder
18	Mill body		together with grinder
19	Gasket	U0000134083	



NERO: U0000119017  
Dosing unit

08





NERO: U0000119017  
Dosing unit

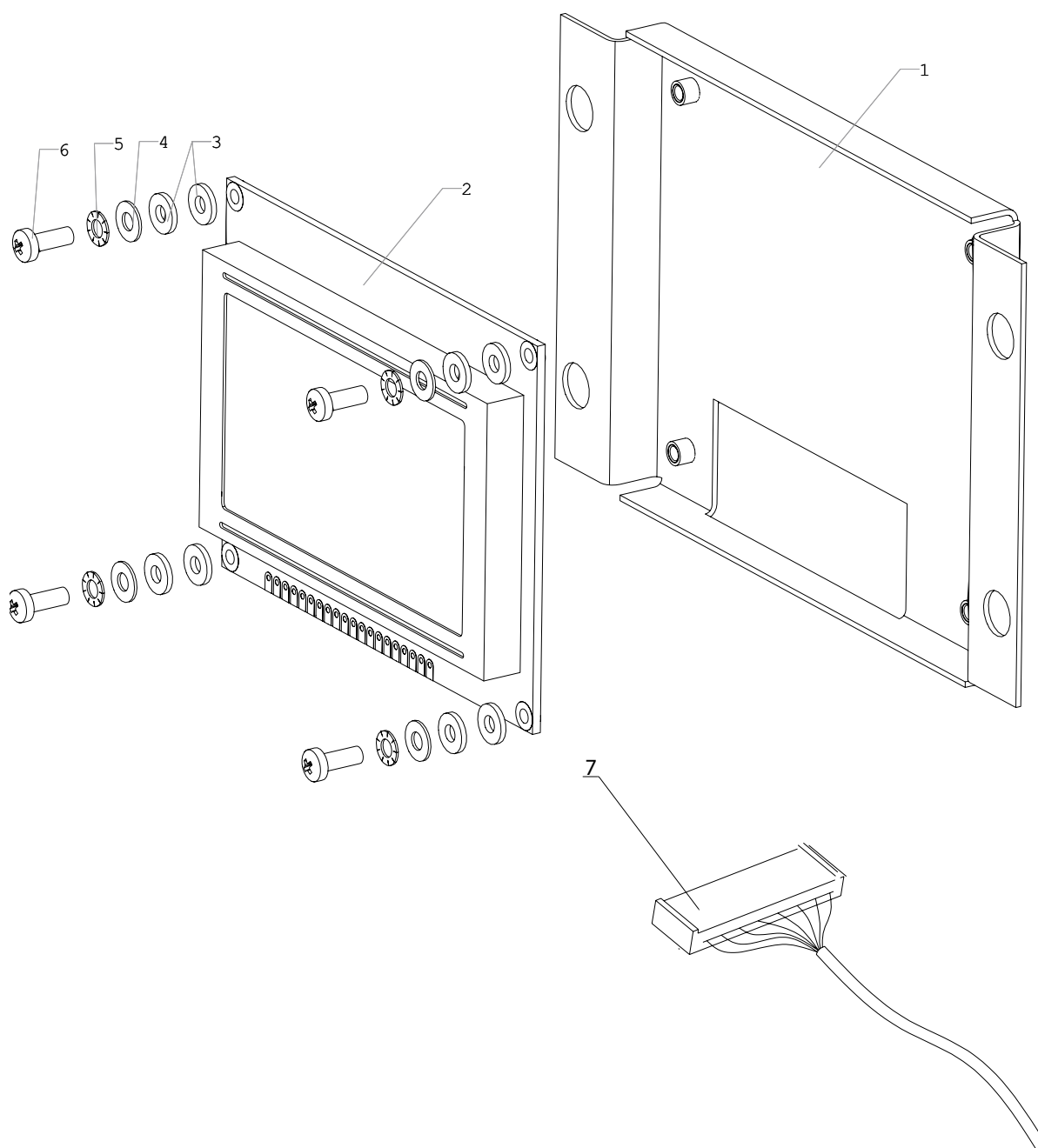
08

Pos.	Part / assembly name	Order code	Note
1	Microswitch	U0000121411	



**NERO / NERO INSTANT: U0000124137**  
**Graphic display assembly**

**09**



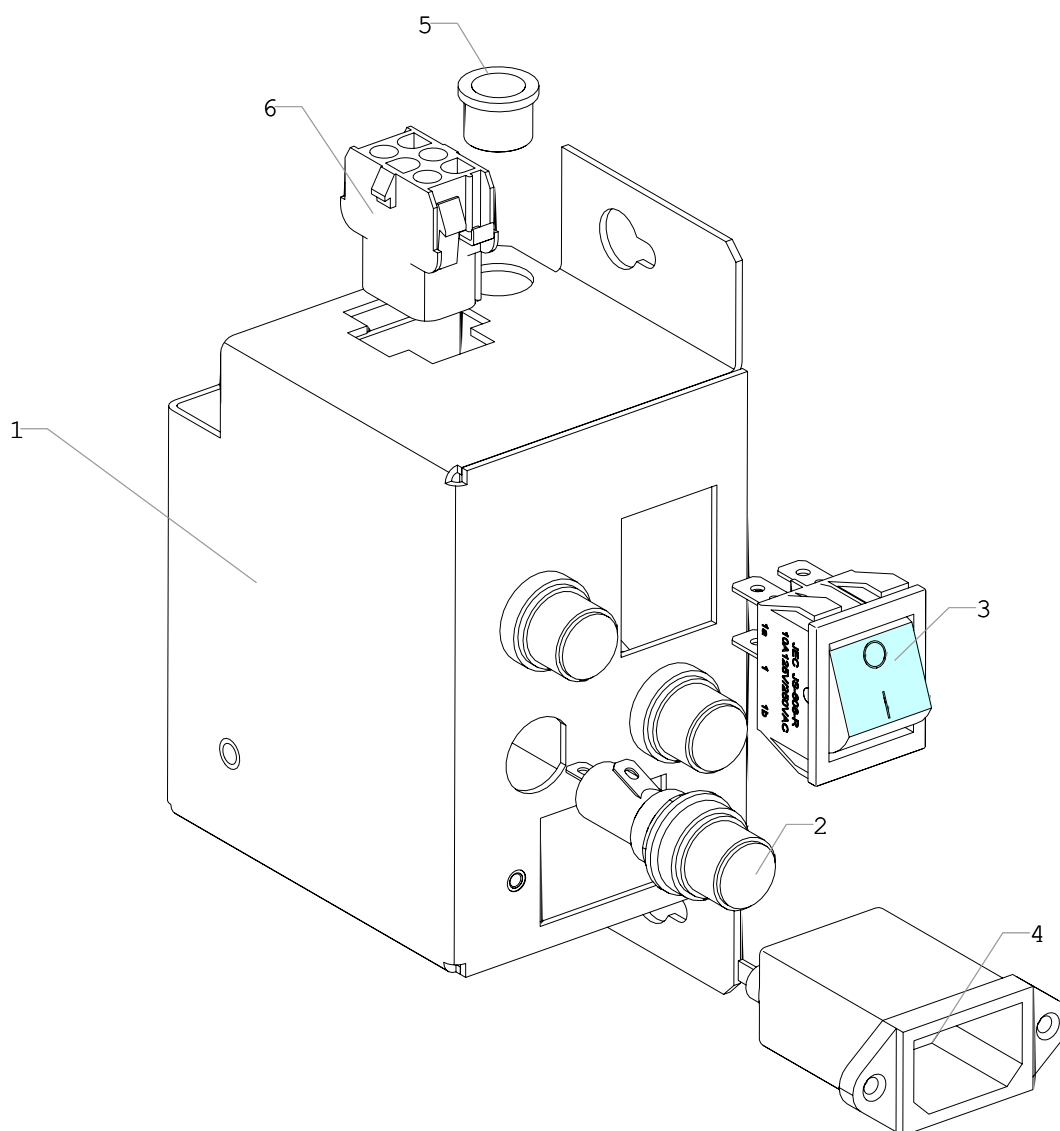

**NERO / NERO INSTANT: U0000124137**  
**Graphic display assembly**
**09**

Pos.	Part / assembly name	Order code	Note
1	Display bracket	U0000130609	
2	Liquid-crystal graphic indicator	U0000121690	SGS12864A0JEW00 SDEC
3	Washer	U0000118991	
4	Washer	U0000002117	DIN 125 A3,2
5	Washer	U0000113549	DIN 6798 A3,2
6	Screw	U0000005865	DIN 7985 M3x8
7	Display harness	U0000124114	



**NERO / NERO INSTANT: U0000126231**  
**Switching unit**

**10**





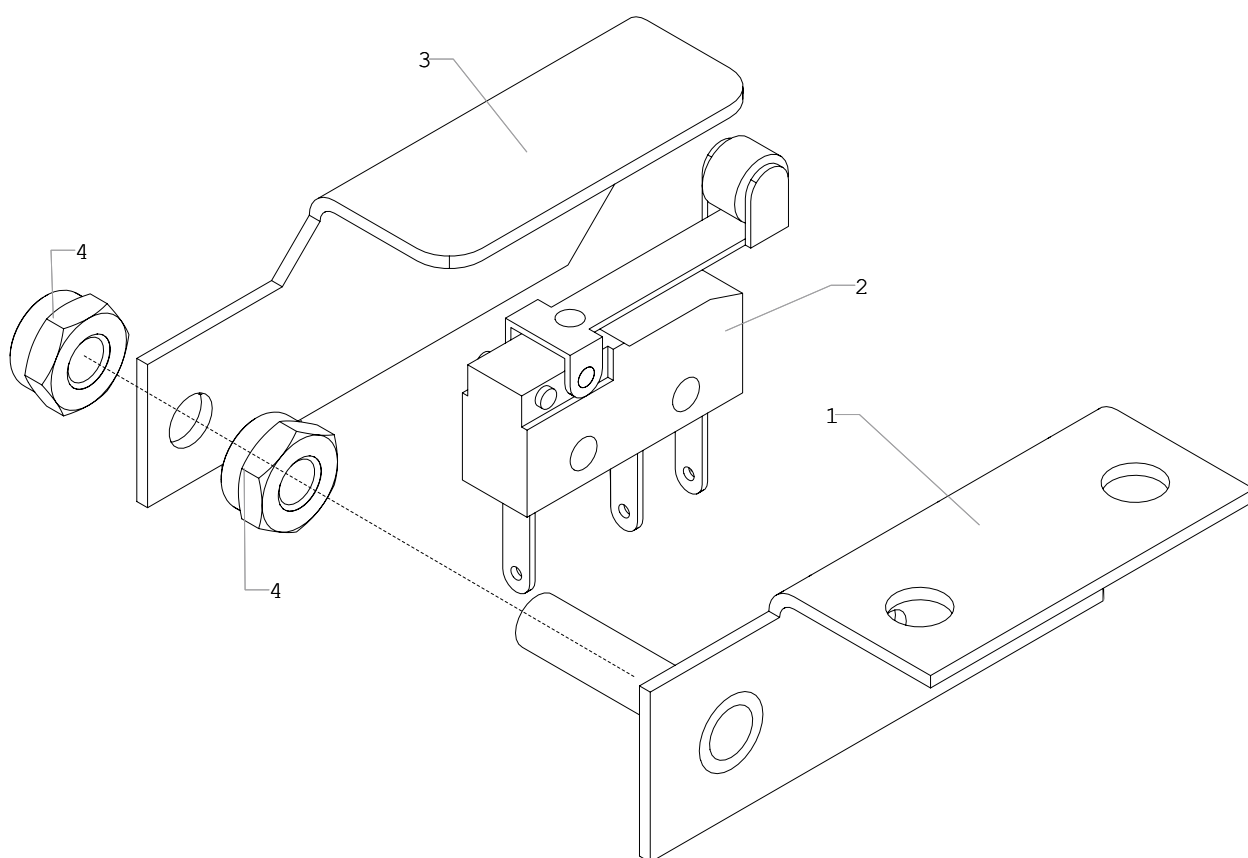
**NERO / NERO INSTANT: U0000126231**  
**Switching unit****10**

Pos.	Part / assembly name	Order code	Note
1	Body assembly	U0000123671	
2	Fuse holder	U0000121536	
3	Switch	U0000004839	
4	Power-line filter	U0000119464	
5	Cable insulating bushing	U0000119160	
6	Connector (female)	U0000001699	



**NERO / NERO INSTANT: U0000131547**  
**Waste sensor**

**11**

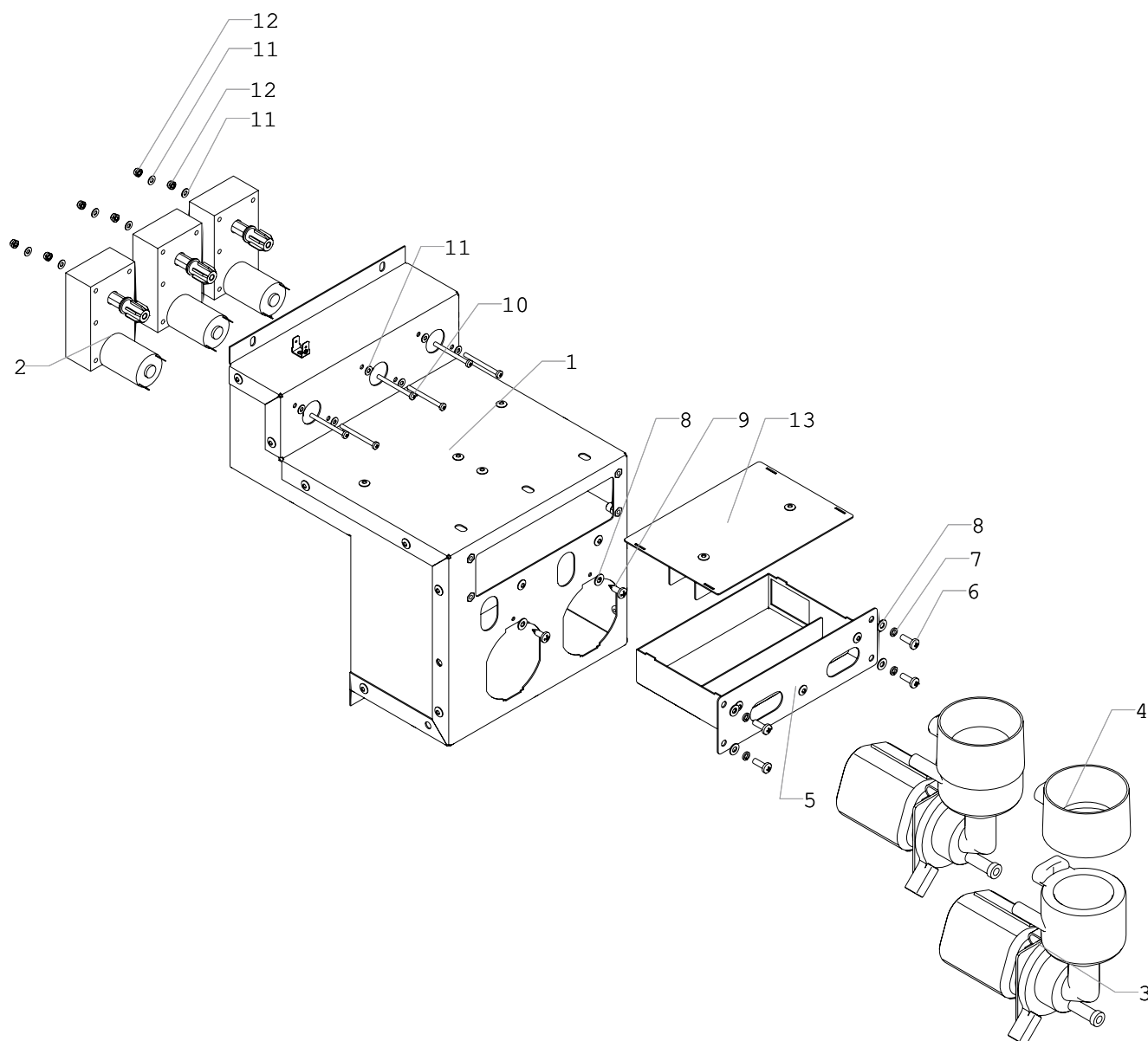



**NERO / NERO INSTANT: U0000131547**  
**Waste sensor**
**11**

Pos.	Part / assembly name	Order code	Note
1	Waste sensor bracket	U0000123638	
2	Microswitch	U0000000185	
3	Angle	U0000123696	
4	Nut	U0000002618	DIN 985 M4

**NERO: U0000131716**  
**Mixer group assembly**

**12**



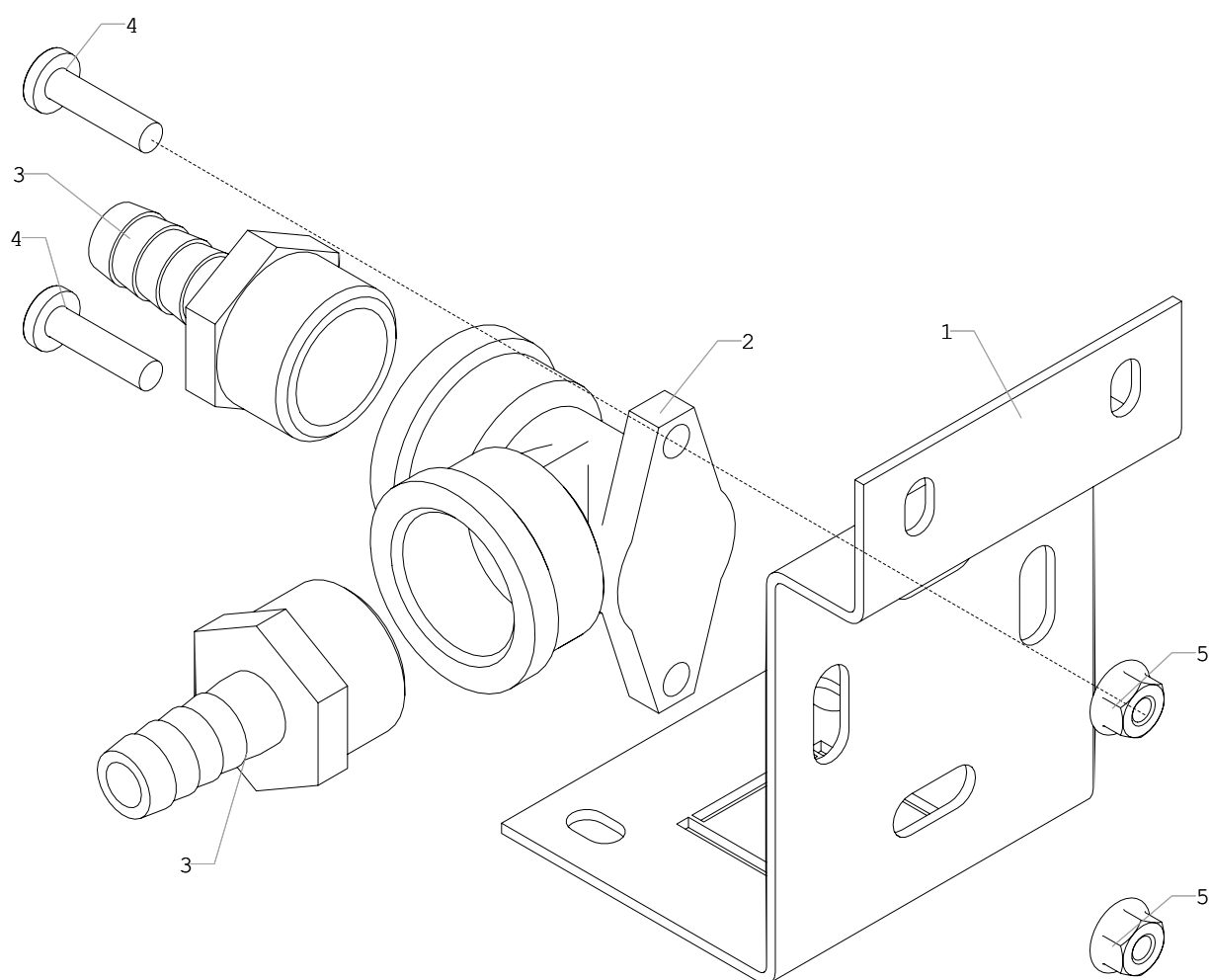

**NERO: U0000131716**  
**Mixer group assembly**
**12**

Pos.	Part / assembly name	Order code	Note
1	Motors bracket	U0000131672	
2	Geared motor	U0000125897	
3	Mixer assembly	U0000121898	Ref. to section 20
4	Mixer fitting	U0000119023	
5	Mixers tray	U0000131670	
6	Screw	U0000002458	DIN 7985 M4x12
7	Washer	U0000000049	DIN 127 A4,1
8	Washer	U0000002116	DIN 125 A4,3
9	Screw	U0000002768	DIN 7981 4,2x13-C
10	Screw	U0000011616	DIN 7985 M3x35
11	Washer	U0000118930	DIN 125 A3,2
12	Nut	U0000001592	DIN 934 M3
13	Cover assembly	U0000131671	



**NERO / NERO INSTANT: U0000131718**  
**Water supply valve bracket assembly**

**13**



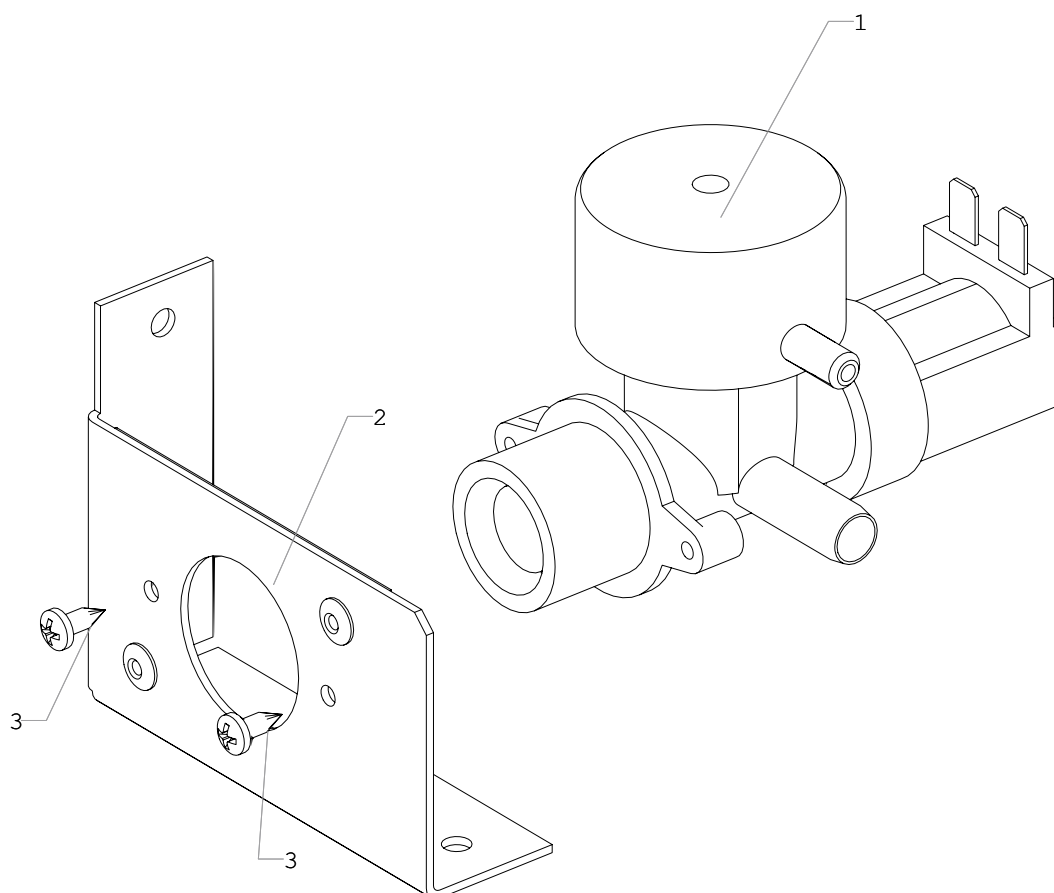
**NERO / NERO INSTANT: U0000131718**  
**Water supply valve bracket assembly****13**

Pos.	Part / assembly name	Order code	Note
1	Bracket	U0000123700	
2	Coupling	U0000122258	
3	Fitting	U0000122259	
4	Screw	U0000002757	DIN 7985 M4x16
5	Nut	U0000002615	DIN 6923 M4



**NERO / NERO INSTANT: U0000131720**  
**Outer water supply components**

**14**





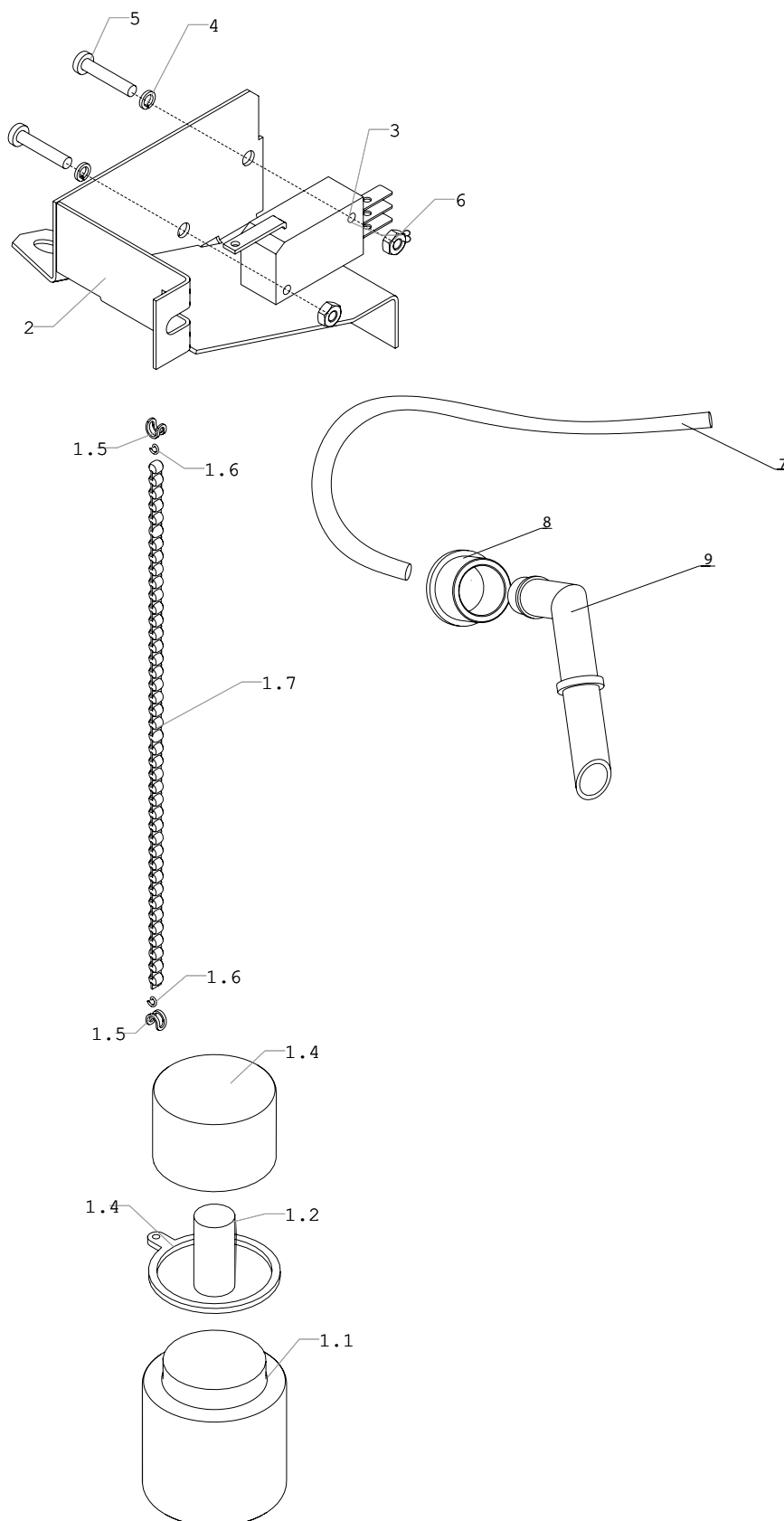

**NERO / NERO INSTANT: U0000131720**  
**Outer water supply components**
**14**

Pos.	Part / assembly name	Order code	Note
1	Water supply electric valve	U0000119205	
2	Water supply valve bracket	U0000131719	
3	Screw	U0000010670	DIN 7981 M3,5x9,5-C



# NERO / NERO INSTANT: U0000131566 Water drainage control assembly

15



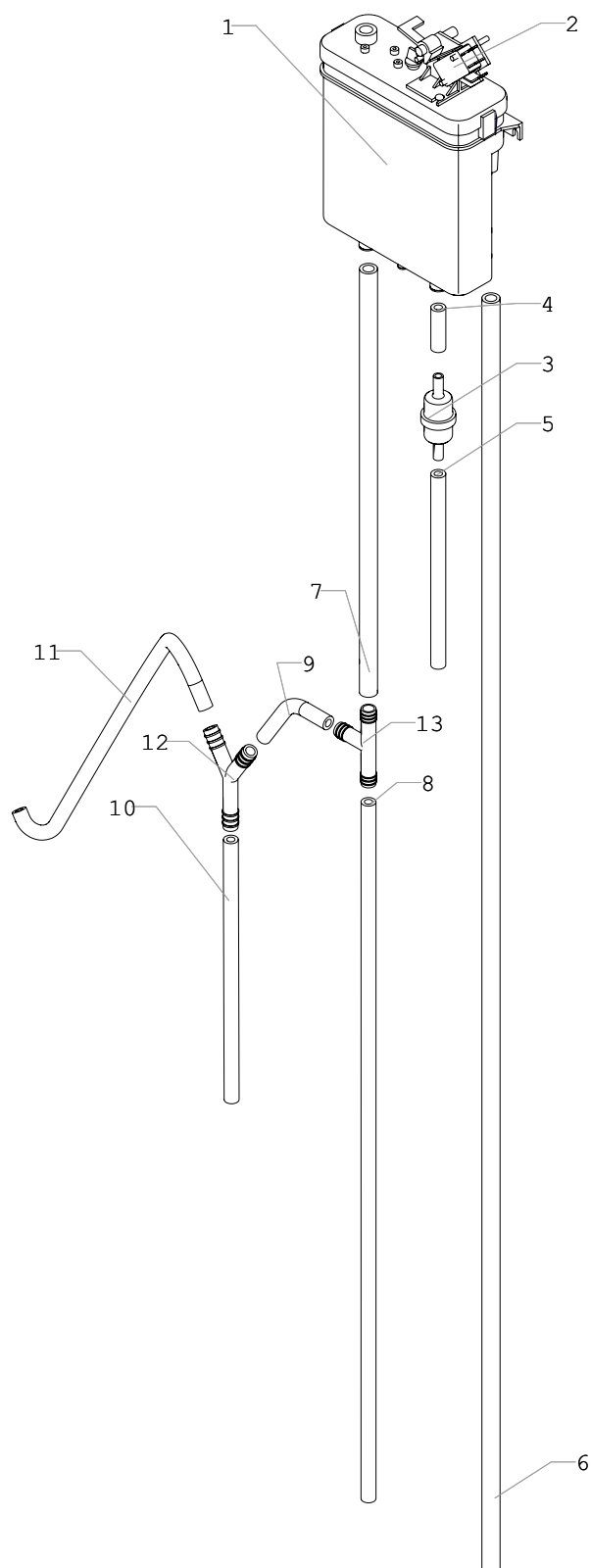

**NERO / NERO INSTANT: U0000131566**  
**Water drainage control assembly**
**15**

Pos.	Part / assembly name	Order code	Note
1	Float assembly	U0000128553	
1.1	Bottle	U0000122115	
1.2	Weight	U0000124134	
1.3	Ring	U0000132533	
1.4	Cover	U0000122116	
1.5	Clamp	U0000119054	
1.6	Ring	U0000119055	
1.7	Chain	U0000119053	
2	Bracket	U0000130642	
3	Microswitch	U0000119203	
4	Washer	U0000001561	DIN 127 M3
5	Screw	U0000002456	DIN 7985 M3x16
6	Nut	U0000001592	DIN 934 M3
7	Tube	U0000131773	
8	Bushing	U0000119160	
9	Nozzle	U0000119191	



**NERO / NERO INSTANT: U0000131567**  
**Float chamber assembly**

**16**



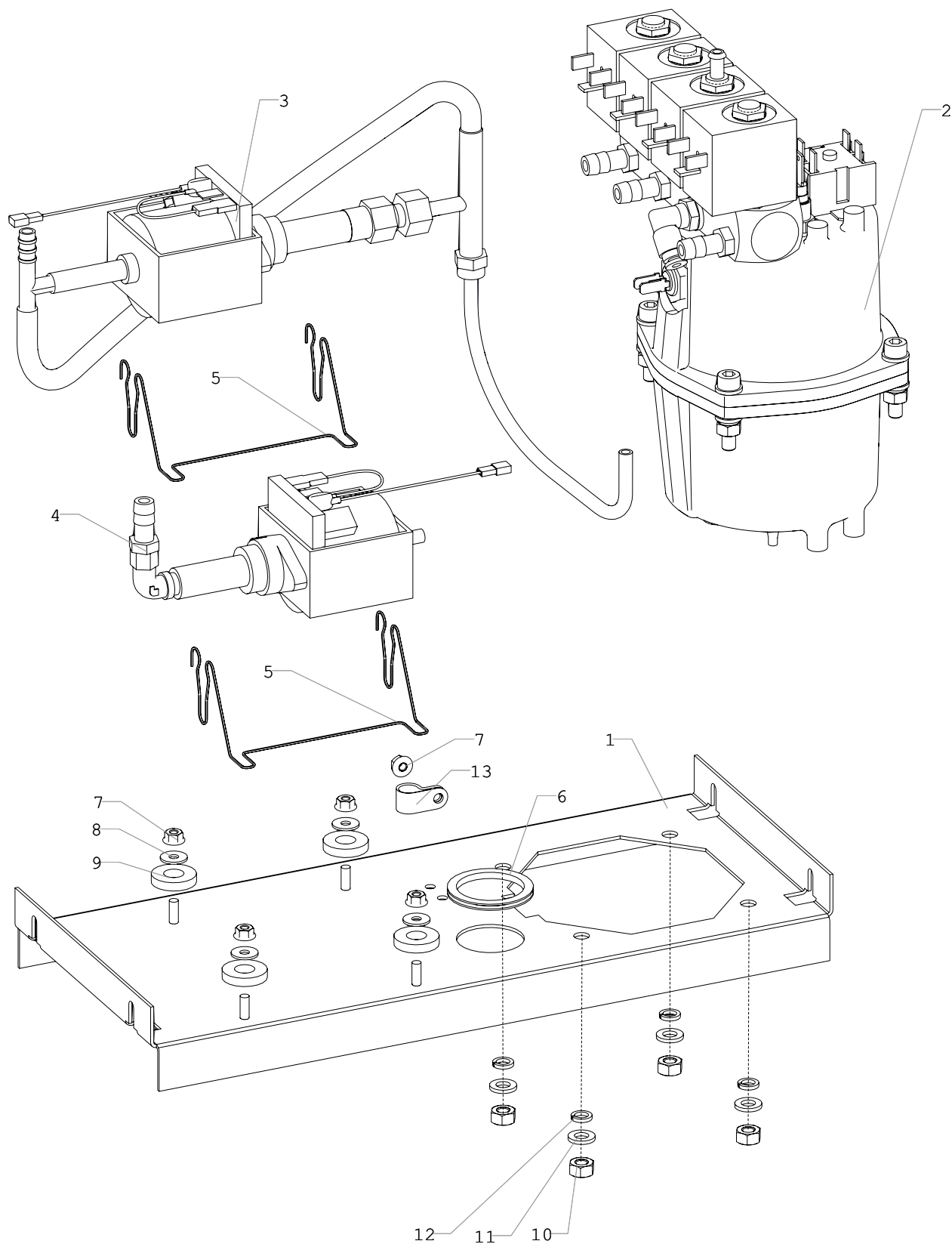

**NERO / NERO INSTANT: U0000131567**  
**Float chamber assembly**
**16**

Pos.	Part / assembly name	Order code	Note
1	Float chamber	U0000119015	
2	Microswitch	U0000121168	
3	Water filter	U0000119059	
4	Tube	U0000131572	
5	Tube	U0000131573	
6	Tube	U0000131571	
7	Tube	U0000131570	
8	Tube	U0000131777	
9	Tube	U0000131779	
10	Tube	U0000131773	
11	Tube	U0000131776	
12	Y-shape coupling	U0000119050	
13	T-shape coupling	U0000119049	



**NERO: U0000131545**  
**Boiler group**

**17**



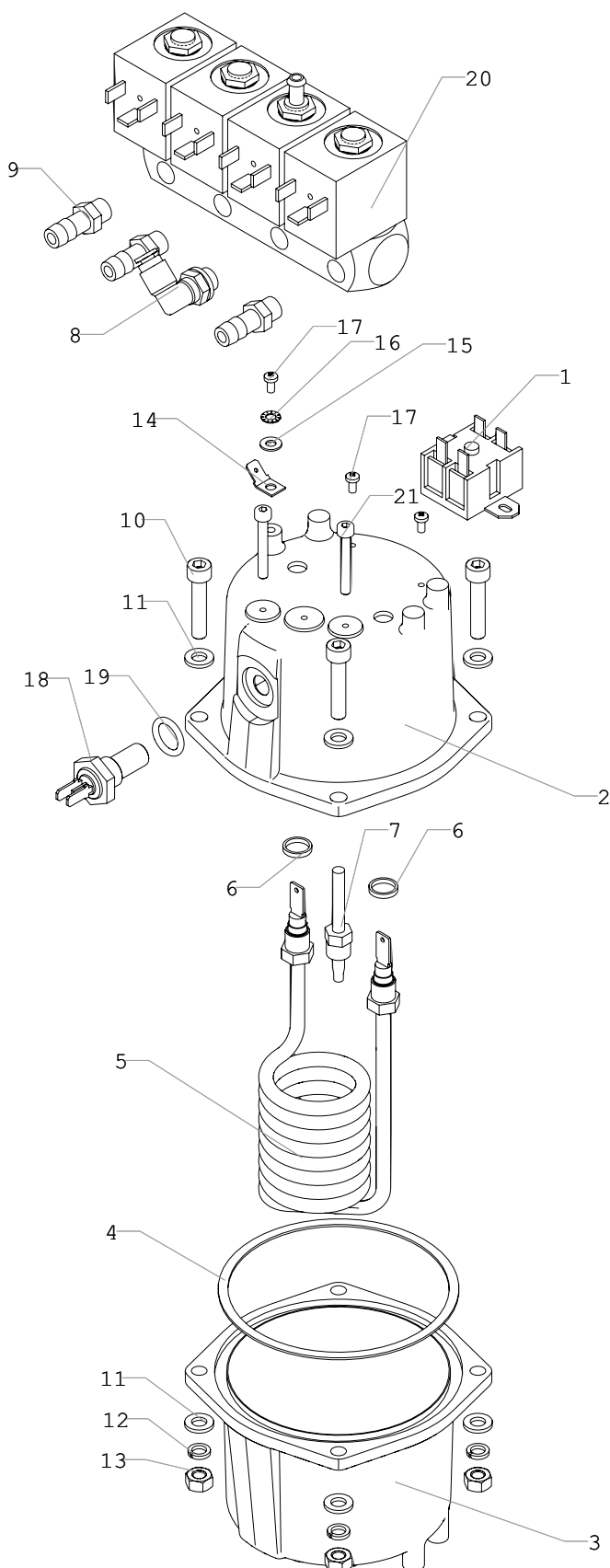

**NERO: U0000131545**
**Boiler group**
**17**

Pos.	Part / assembly name	Order code	Note
1	Tray	U0000123667	
2	Boiler assembly	U0000131531	Ref. to section 18
3	Pump EX5GW	U0000119209	
4	Pump EX7	U0000119210	
5	Spring support	U0000119036	
6	Strip	U0000119413	
7	Nut	U0000000052	DIN 6923 M4
8	Washer	U0000000048	DIN 9021 A4,3
9	Rubber damper	U0000119048	
10	Nut	U0000118926	DIN 934 M6
11	Washer	U0000118932	DIN 125 A6,4
12	Washer	U0000118929	DIN 127 A6,1
13	Clamp	U0000113752	



**NERO: U0000131531**  
**Boiler assembly**

**18**





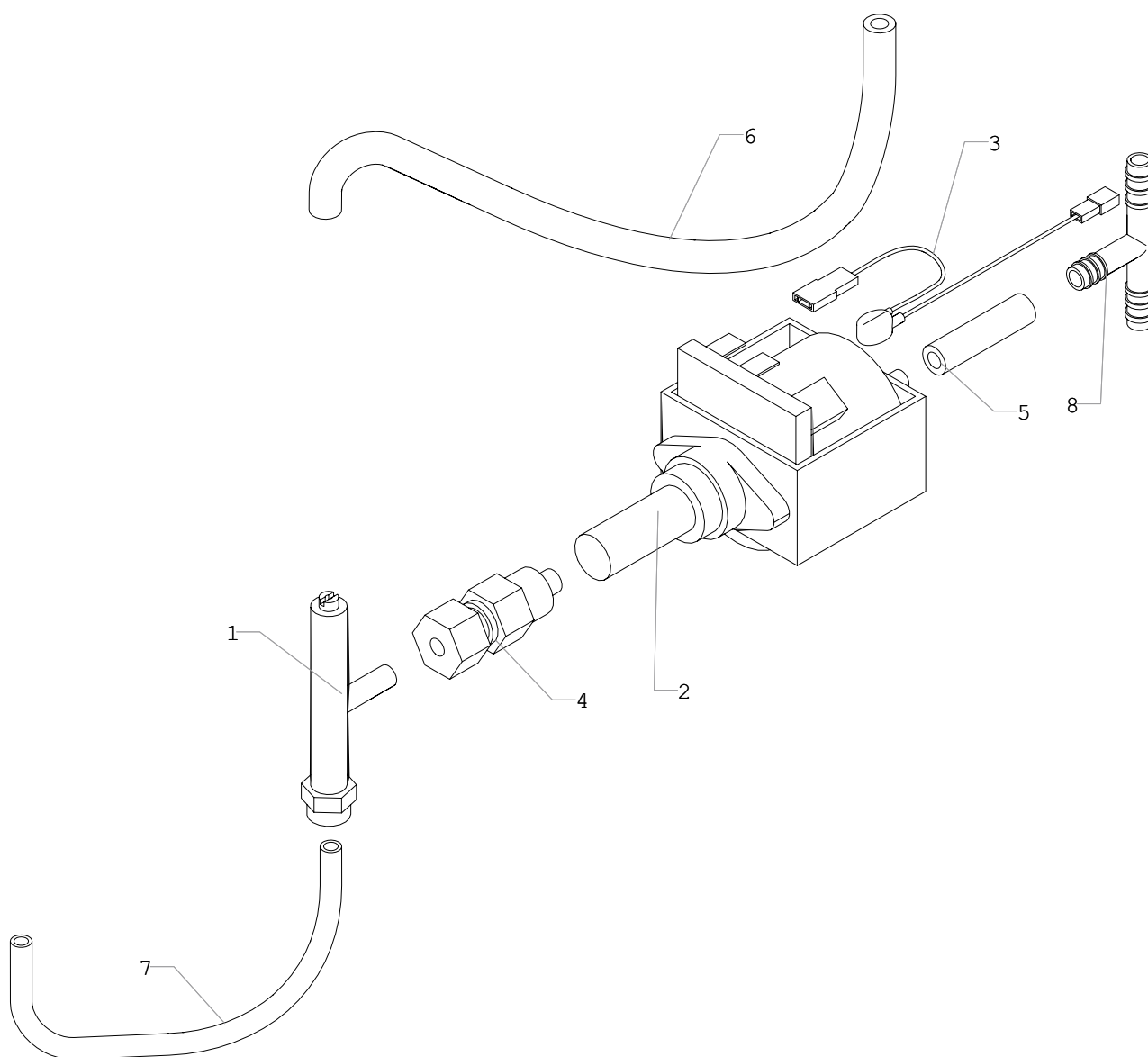

**NERO: U0000131531**  
**Boiler assembly**
**18**

Pos.	Part / assembly name	Order code	Note
1	Thermostat	U0000119206	
2	Boiler cover	U0000119060	
3	Boiler cup	U0000119061	
4	Gasket	U0000122231	
5	Heating element	U0000119212	
6	Gasket	U0000119213	
7	Diffuser	U0000119062	
8	Rotating fitting	U0000119065	
9	Fitting	U0000125355	
10	Bolt	U0000122565	DIN 933 M6x30
11	Washer	U0000118932	DIN 125 A6,4
12	Washer	U0000118929	DIN 127 A6,1
13	Nut	U0000118926	DIN 934 M6
14	Ground terminal	U0000001536	
15	Washer	U0000002116	DIN 125 A4,3
16	Washer	U0000001593	DIN 6798 A4,3
17	Screw	U0000001979	DIN 7985 M3x6
18	Temperature sensor	U0000133260	
19	Gasket	U0000133261	
20	Electric valve	U0000125110	
21	Bolt	U0000120763	DIN 912 M4x30



**NERO / NERO INSTANT: U0000125025**  
**Boiler pump assembly**

**19**



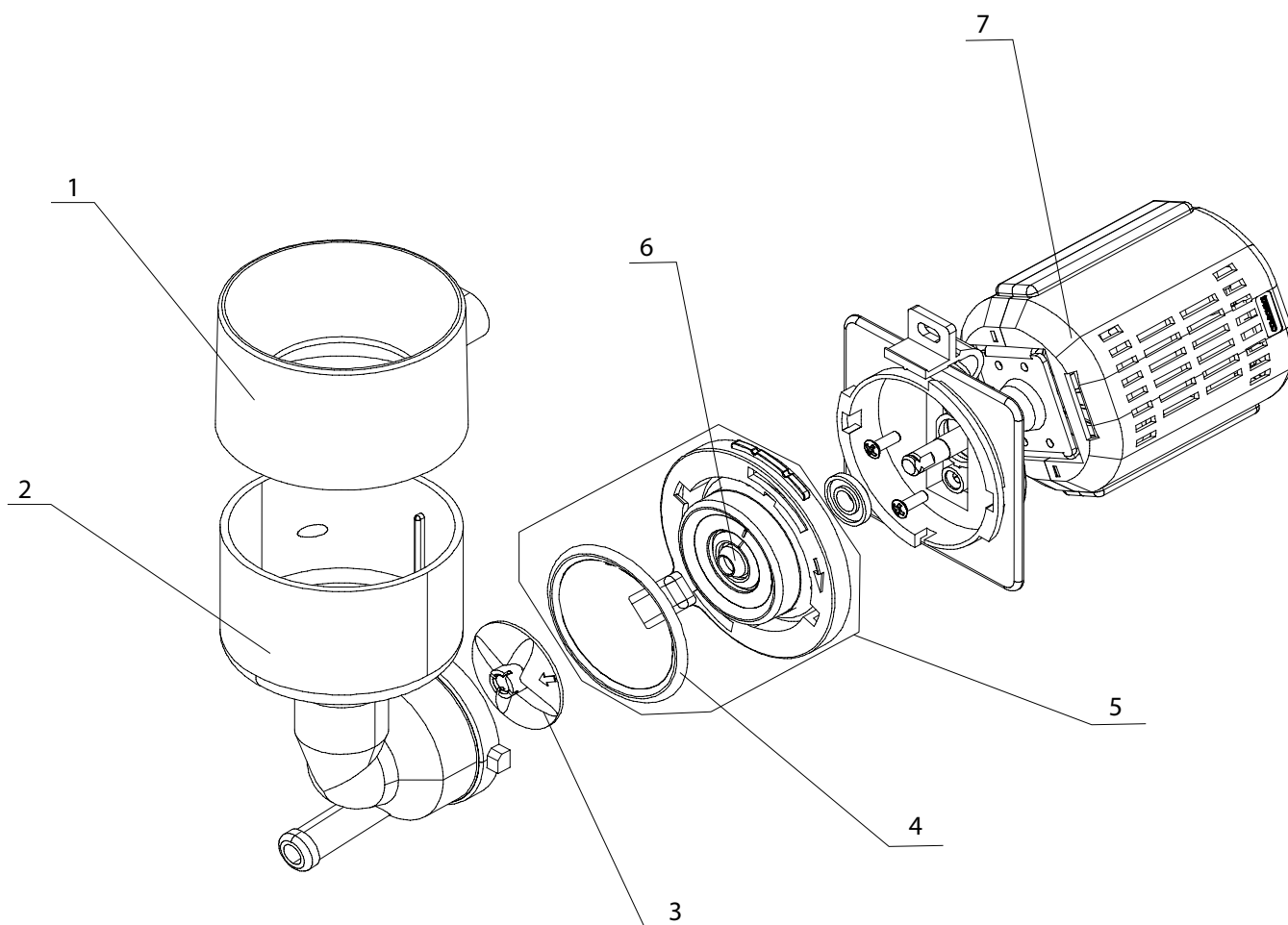

**NERO / NERO INSTANT: U0000125025**  
**Boiler pump assembly**
**19**

Pos.	Part / assembly name	Order code	Note
1	Relief valve	U0000119406	
2	Pump	U0000119209	
3	Temperature fuse	U0000131133	
4	Check valve	U0000119067	
5	Tube	U0000131572	
6	Tube	U0000132431	
7	"Rilsan" tube	U0000132434	
8	T-shape coupling	U0000119052	



**NERO / NERO INSTANT: U0000121898**  
**Mixer assembly**

**20**




**NERO / NERO INSTANT: U0000121898**  
**Mixer assembly**
**20**

Pos.	Part / assembly name	Order code	Note
1	Cover	U0000121623	
2	Funnel	U0000124470	
3	Impeller	U0000121160	
4	Gasket	U0000121161	
5	Funnel holder	U0000121533	
6	Seal	U0000121527	
7	Motor	U0000124533	